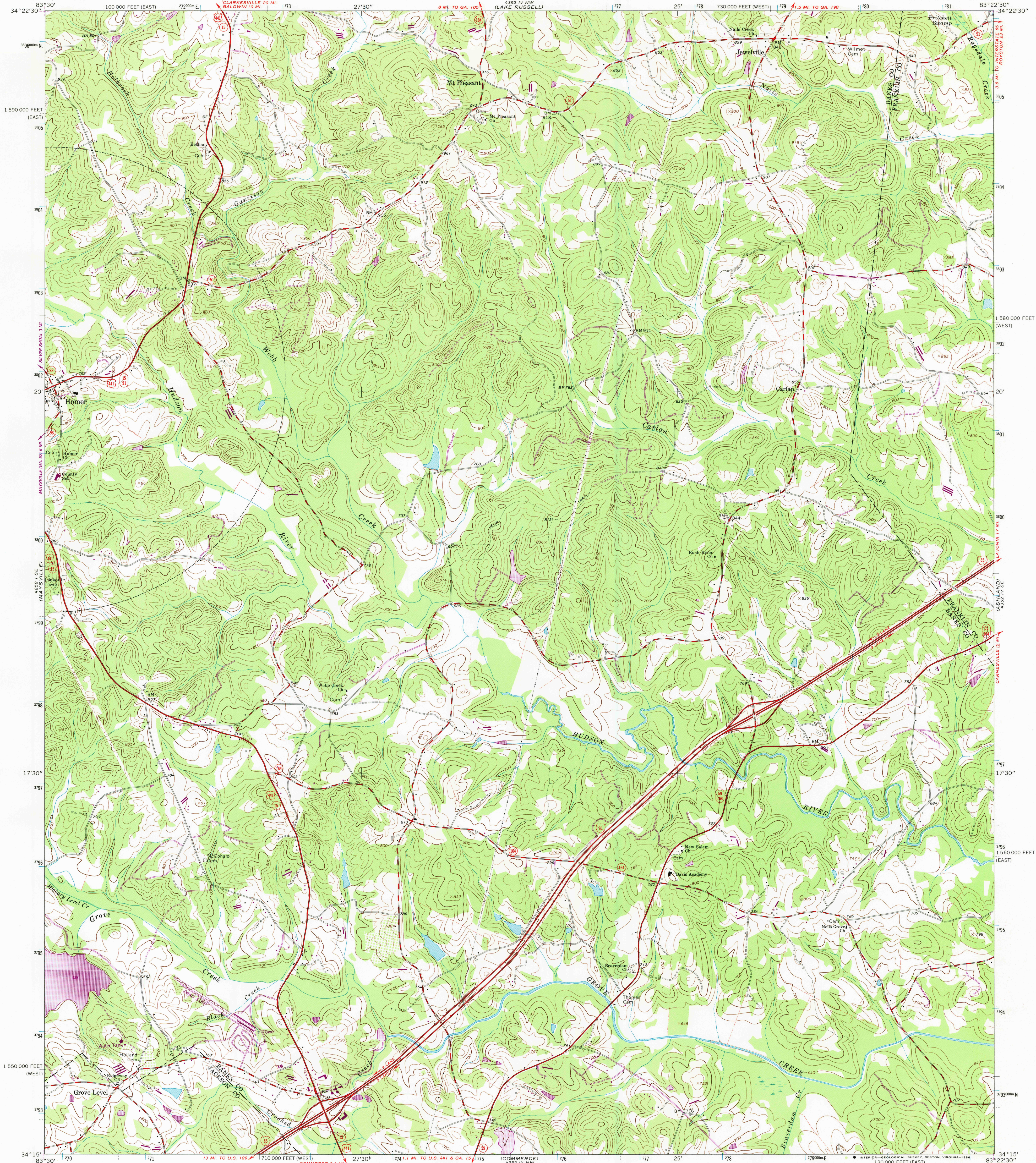
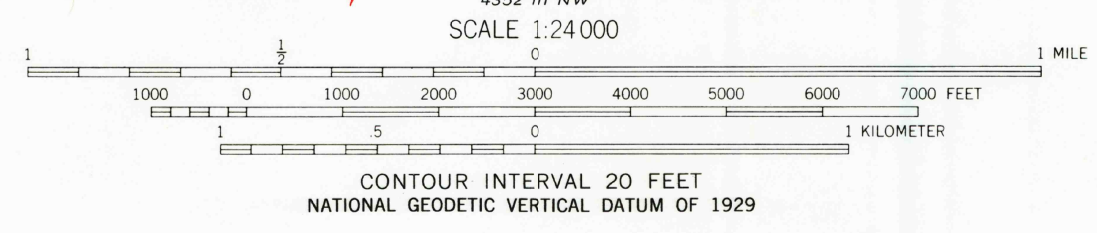
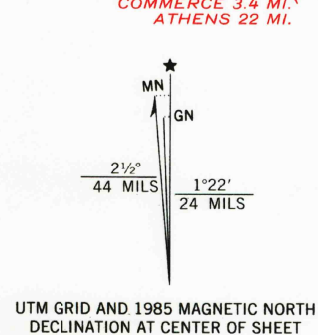


UNITED STATES
DEPARTMENT OF THE INTERIOR
GEOLOGICAL SURVEY

HOMER QUADRANGLE
GEORGIA
7.5 MINUTE SERIES (TOPOGRAPHIC)

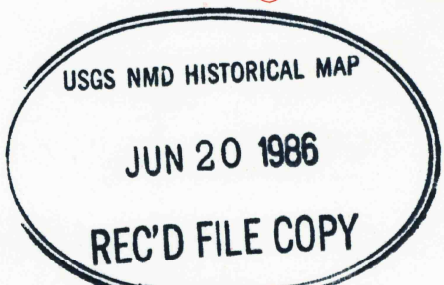


Maped, edited, and published by the Geological Survey
Control by USGS and USC&GS
Topography by photogrammetric methods from aerial photographs
taken 1956, 1958, and 1963. Field checked 1964
Polyconic projection. 1927 North American datum
10,000-foot grids based on Georgia coordinate system, west and
east zones
1000-meter Universal Transverse Mercator grid ticks,
zone 17, shown in blue
To place on the predicted North American Datum 1983,
move the projection lines 10 meters south and
10 meters west as shown by dashed corner ticks
Fine red dashed lines indicate selected fence and field lines where
generally visible on aerial photographs. This information is unchecked
Revisions shown in purple compiled in cooperation with State of Georgia
agencies from aerial photographs taken 1981 and other sources
This information not field checked. Map edited 1985



THIS MAP COMPLIES WITH NATIONAL MAP ACCURACY STANDARDS
FOR SALE BY U. S. GEOLOGICAL SURVEY, RESTON, VIRGINIA 22092
A FOLDER DESCRIBING TOPOGRAPHIC MAPS AND SYMBOLS IS AVAILABLE ON REQUEST

ROAD CLASSIFICATION	
Heavy-duty	Light-duty
Medium-duty	Unimproved dirt
Interstate Route	U. S. Route
	State Route



HOMER, GA.
34083-C4-TF-024
1964
PHOTOREVISED 1985
DMA 4352 IV SW-SERIES V845