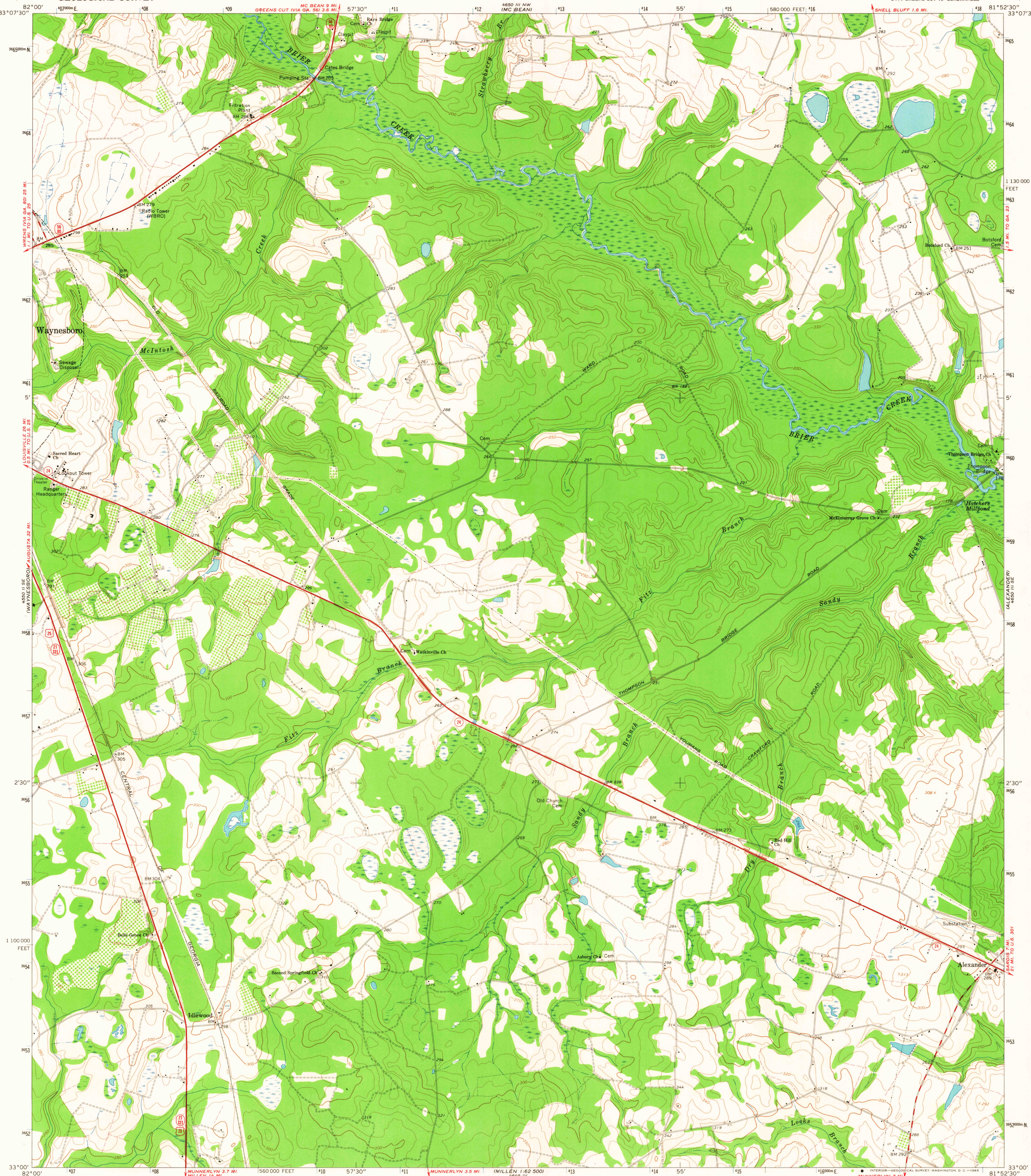


UNITED STATES  
DEPARTMENT OF THE INTERIOR  
GEOLOGICAL SURVEY

IDLEWOOD QUADRANGLE  
GEORGIA—BURKE CO.  
7.5 MINUTE SERIES (TOPOGRAPHIC)  
SW/4 GREENS CUT 15' QUADRANGLE



Mapped, edited, and published by the Geological Survey

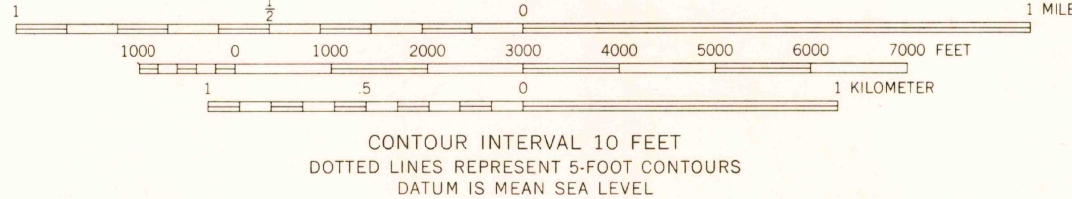
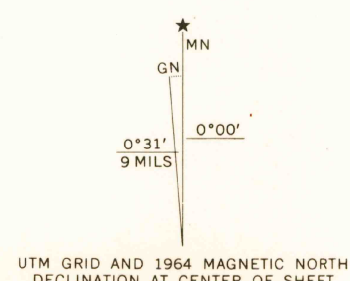
Control by USGS, USC&GS, and Georgia Geodetic Survey

Topography by photogrammetric methods from aerial photographs taken 1962. Field checked 1964

Polyconic projection. 1927 North American datum  
10,000-foot grid based on Georgia coordinate system, east zone  
1000-meter Universal Transverse Mercator grid ticks,  
zone 17, shown in blue

Fine red dashed lines indicate selected fence and field lines where  
generally visible on aerial photographs. This information is unchecked

Short dashed blue lines indicate elliptical bay outlines  
visible on aerial photographs



THIS MAP COMPLIES WITH NATIONAL MAP ACCURACY STANDARDS  
FOR SALE BY U. S. GEOLOGICAL SURVEY, WASHINGTON 25, D. C.  
A FOLDER DESCRIBING TOPOGRAPHIC MAPS AND SYMBOLS IS AVAILABLE ON REQUEST

ROAD CLASSIFICATION	
Heavy-duty	Light-duty
Medium-duty	Unimproved dirt
U. S. Route	State Route

IDLEWOOD, GA.  
SW/4 GREENS CUT 15' QUADRANGLE  
N3300—W8152.5/7.5

1964

AMS 4650 III SW—SERIES V845

AUG 26 1965