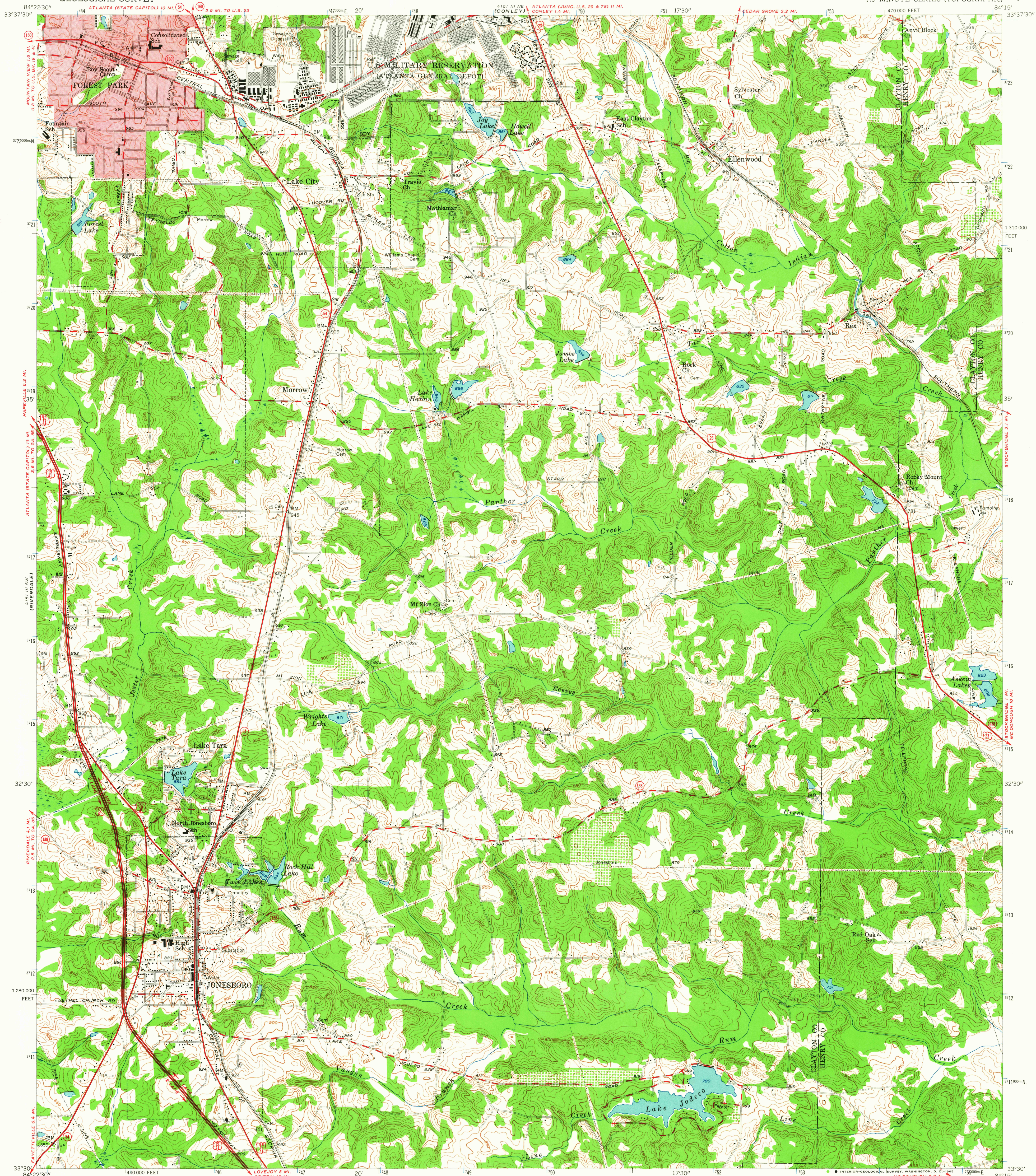
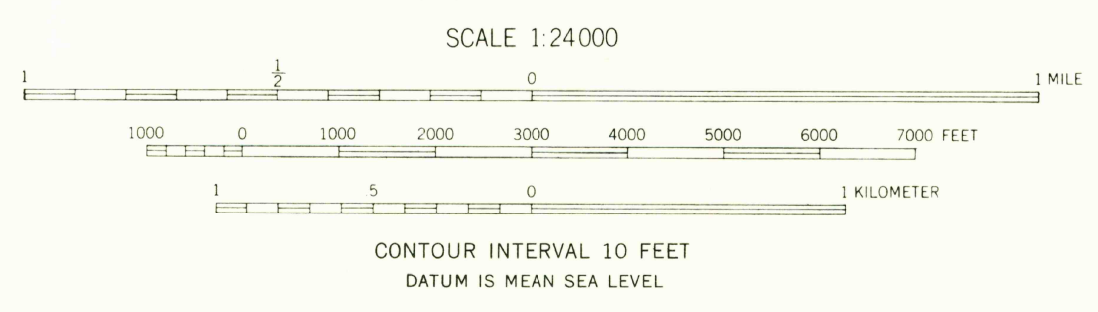
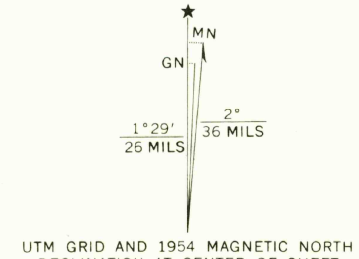


UNITED STATES
DEPARTMENT OF THE INTERIOR
GEOLOGICAL SURVEY

JONESBORO QUADRANGLE
GEORGIA
7.5 MINUTE SERIES (TOPOGRAPHIC)



Mapped, edited, and published by the Geological Survey
Control by USGS, USC&GS, and Georgia Geodetic Survey
Topography from aerial photographs by photogrammetric methods
Aerial photographs taken 1952. Field check 1954
Polyconic projection. 1927 North American datum
10,000-foot grid based on Georgia coordinate system,
west zone
Red tint indicates area in which only
landmark buildings are shown
Unchecked elevations are shown in brown
1000-meter Universal Transverse Mercator grid ticks,
zone 16, shown in blue



ROAD CLASSIFICATION	
Heavy-duty	Light-duty
Medium-duty	Unimproved dirt
U.S. Route	State Route

THIS MAP COMPLIES WITH NATIONAL MAP ACCURACY STANDARDS
FOR SALE BY U. S. GEOLOGICAL SURVEY, WASHINGTON 25, D. C.
A FOLDER DESCRIBING TOPOGRAPHIC MAPS AND SYMBOLS IS AVAILABLE ON REQUEST

U.S.G.S. JONESBORO, GA.
N 3330-W 8415/7.5
1954
AMS 4151 III SE--SERIES V845

2645
APR 1 4 1965