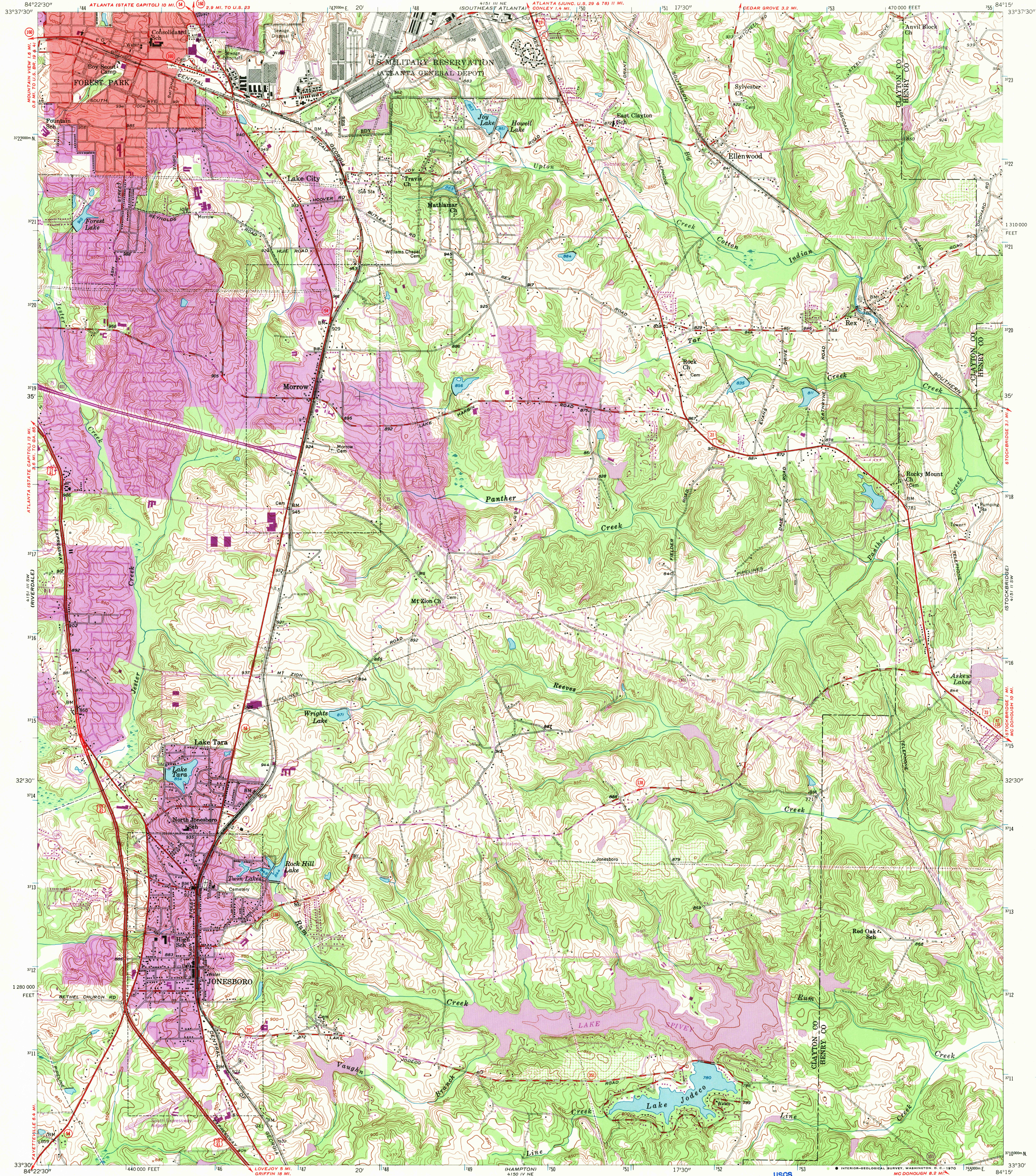


UNITED STATES
DEPARTMENT OF THE INTERIOR
GEOLOGICAL SURVEY

JONESBORO QUADRANGLE
GEORGIA
7.5 MINUTE SERIES (TOPOGRAPHIC)



Mapped, edited, and published by the Geological Survey

Control by USGS, USC&GS, and Georgia Geodetic Survey

Topography from aerial photographs by photogrammetric methods

Aerial photographs taken 1952. Field check 1954

Polycyclic projection. 1927 North American datum

10,000-foot grid based on Georgia coordinate system, west zone

1000-meter Universal Transverse Mercator grid ticks,

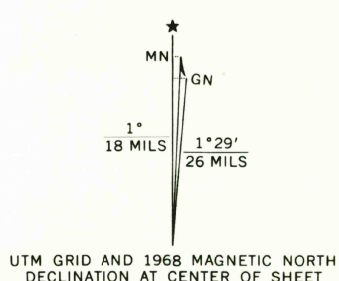
zone 16, shown in blue

Red tint indicates areas in which only landmark buildings are shown

Revisions shown in purple compiled from aerial photographs

taken 1968. This information not field checked

Purple tint indicates extension of urban areas



SCALE 1:24,000

1 000 0 1000 2000 3000 4000 5000 6000 7000 FEET

1 5 0 KILOMETER

CONTOUR INTERVAL 10 FEET

DATUM IS MEAN SEA LEVEL

THIS MAP COMPLIES WITH NATIONAL MAP ACCURACY STANDARDS
FOR SALE BY U.S. GEOLOGICAL SURVEY, WASHINGTON, D. C. 20242
A FOLDER DESCRIBING TOPOGRAPHIC MAPS AND SYMBOLS IS AVAILABLE ON REQUEST

USGS
Historical File
Topographic Division



U.S.G.S.
FILE COPY
TOPOGRAPHIC DIVISION

ROAD CLASSIFICATION
Heavy-duty ——— Light-duty ———
Medium-duty ——— Unimproved dirt ———
Interstate Route U.S. Route State Route

JONESBORO, GA.

N3330—W8415/7.5

1954

PHOTOREVISED 1968

AMS 4151 III SE—SERIES V845

MAY 25 1970