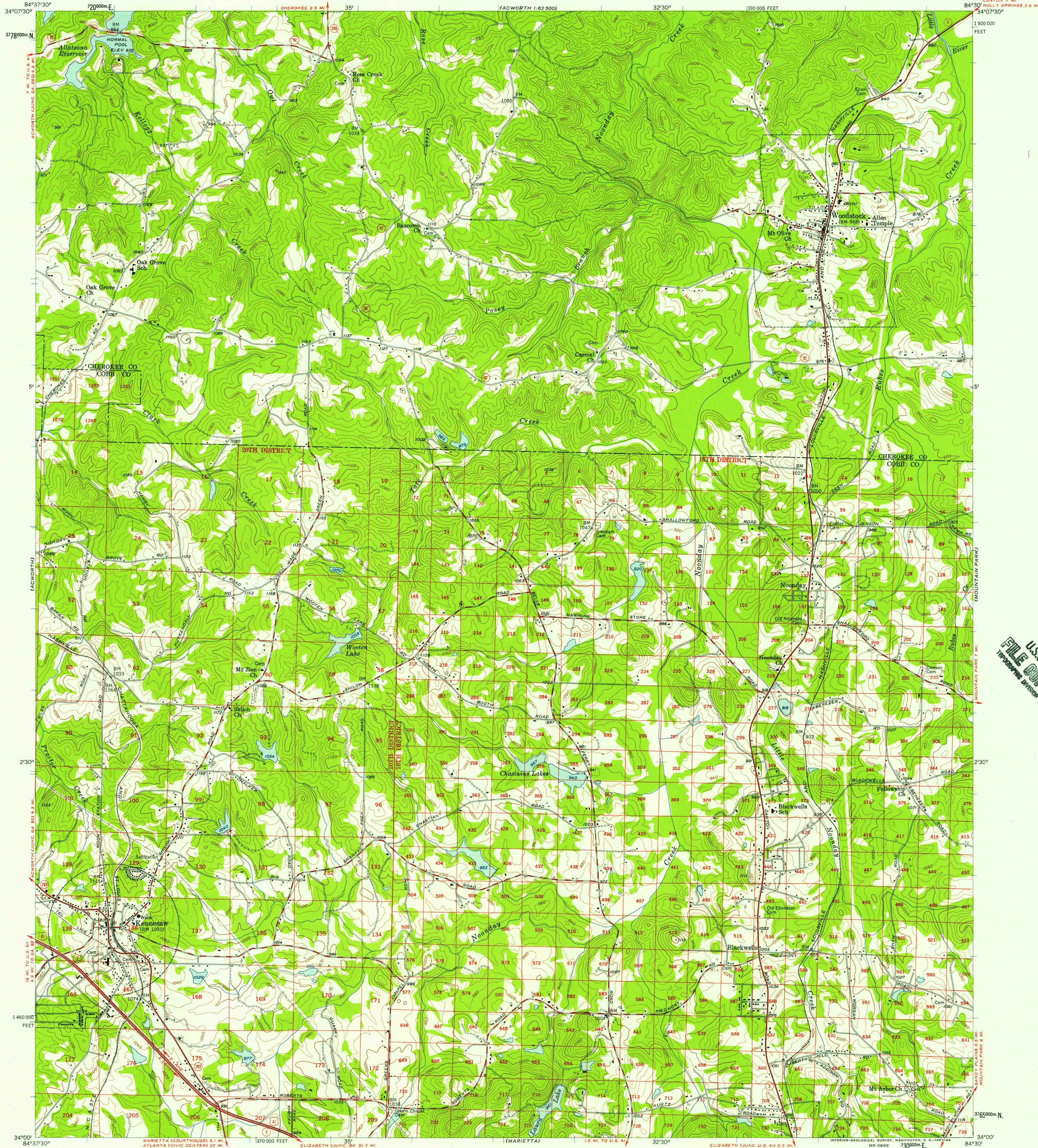


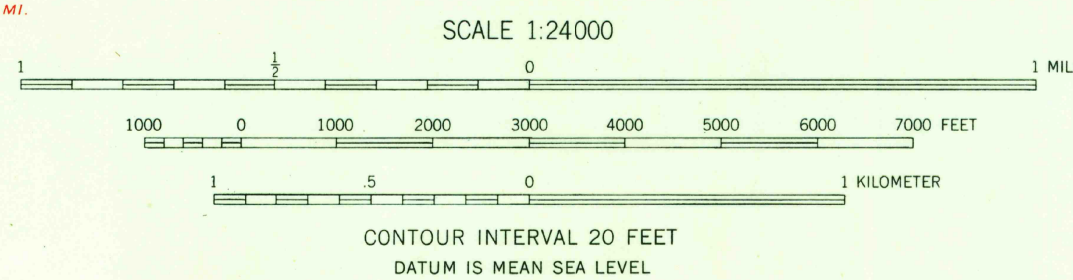
UNITED STATES  
DEPARTMENT OF THE INTERIOR  
GEOLOGICAL SURVEY

KENNESAW QUADRANGLE  
GEORGIA  
7.5 MINUTE SERIES (TOPOGRAPHIC)  
SW 1/4 ACWORTH 15' QUADRANGLE



Maped, edited, and published by the Geological Survey  
Control by USGS, USC&GS, and Georgia Geodetic Survey  
Topography from aerial photographs by Kelsh plotter  
Aerial photographs taken 1955. Field check 1956  
Polyconic projection. 1927 North American datum  
10,000-foot grid based on Georgia coordinate system,  
west zone. 1000-meter Universal Transverse Mercator  
grid ticks, zone 16, shown in blue  
Land lines from information supplied by  
Cobb County Roads and Revenue Commission

TRUE NORTH  
MAGNETIC NORTH  
APPROXIMATE MEAN  
DECLINATION, 1956



THIS MAP COMPLIES WITH NATIONAL MAP ACCURACY STANDARDS  
FOR SALE BY U. S. GEOLOGICAL SURVEY, WASHINGTON 25, D. C.  
A FOLDER DESCRIBING TOPOGRAPHIC MAPS AND SYMBOLS IS AVAILABLE ON REQUEST



ROAD CLASSIFICATION  
Heavy-duty ——— Light-duty ———  
Medium-duty ——— Unimproved dirt ———  
U.S. Route ——— State Route ———

U.S.G.S.  
FILE COPY  
TOPOGRAPHIC DIVISION

KENNESAW, GA.

SE 1/4 ACWORTH 15' QUADRANGLE  
N 3400—W 8430/7.5

1956

NOV - 5 1957

1920