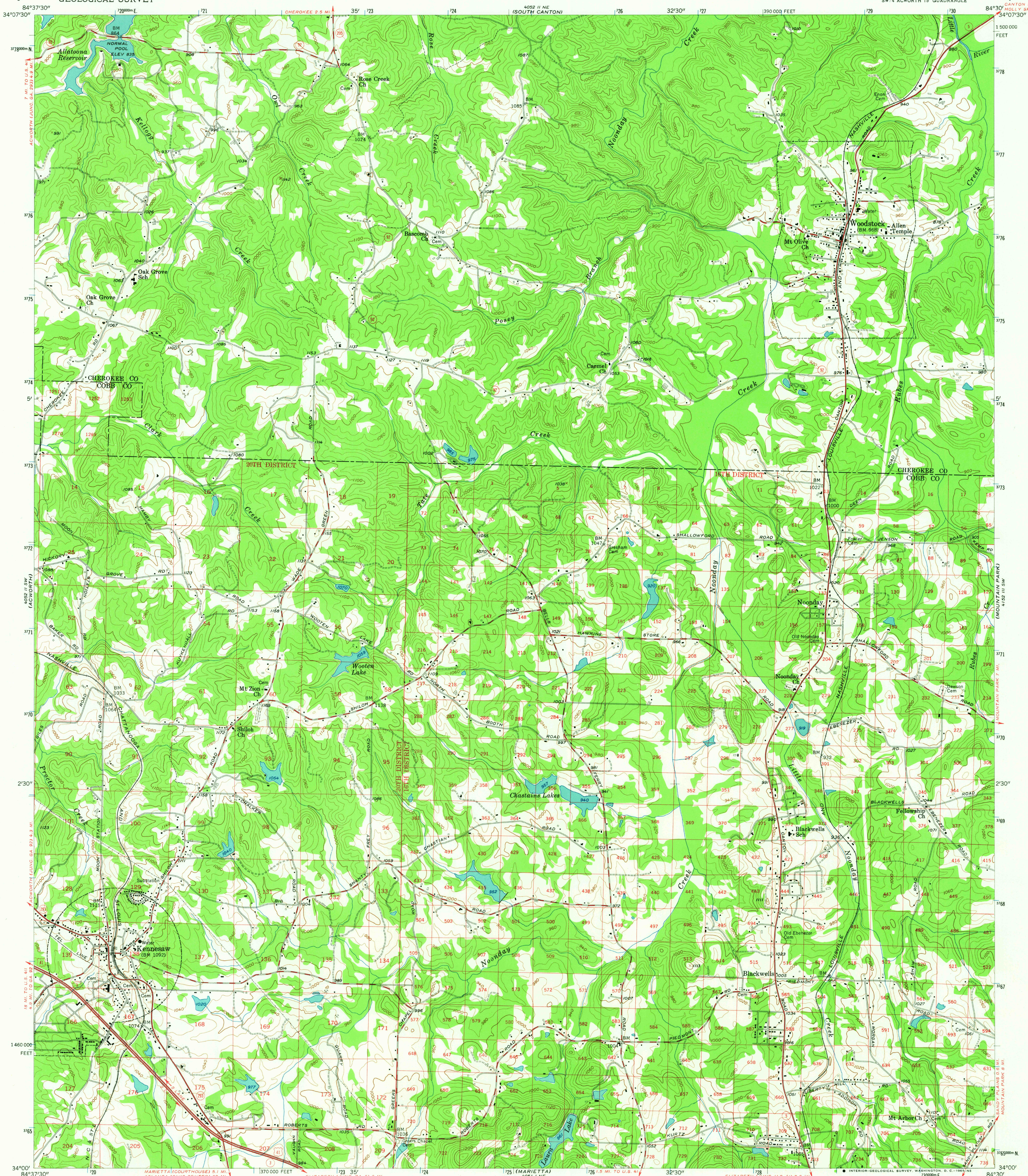
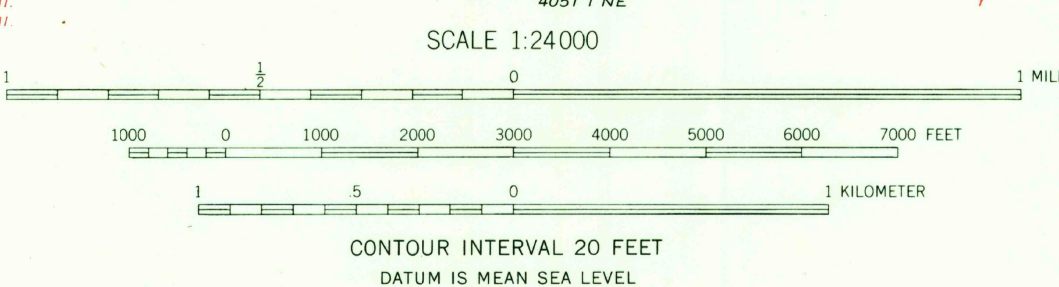
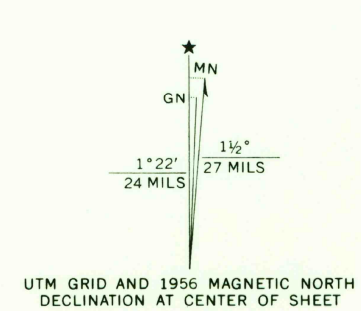


UNITED STATES  
DEPARTMENT OF THE INTERIOR  
GEOLOGICAL SURVEY

KENNESAW QUADRANGLE  
GEORGIA  
7.5 MINUTE SERIES (TOPOGRAPHIC)  
SW 1/4 ACWORTH 15' QUADRANGLE



Mapped, edited, and published by the Geological Survey  
Control by USGS, USC&GS, and Georgia Geodetic Survey  
Topography from aerial photographs by Kelsh plotter  
Aerial photographs taken 1955. Field check 1956  
Polyconic projection. 1927 North American datum  
10,000-foot grid based on Georgia coordinate system,  
west zone. 1000-meter Universal Transverse Mercator  
grid ticks, zone 16, shown in blue  
Land lines from information supplied by  
Cobb County Roads and Revenue Commission



THIS MAP COMPLIES WITH NATIONAL MAP ACCURACY STANDARDS  
FOR SALE BY U. S. GEOLOGICAL SURVEY, WASHINGTON 25, D. C.  
A FOLDER DESCRIBING TOPOGRAPHIC MAPS AND SYMBOLS IS AVAILABLE ON REQUEST

ROAD CLASSIFICATION

Heavy-duty	Light-duty
Medium-duty	Unimproved dirt
U. S. Route	State Route

USGS  
Historical File  
Topographic Division

U.S.G.S.  
FILE COPY  
TOPOGRAPHIC DIVISION

KENNESAW, GA.  
SE 1/4 ACWORTH 15' QUADRANGLE  
N 3400-W 8430/7.5

1956

JUN 10 1956

AMS 4052 II SE-SERIES V845