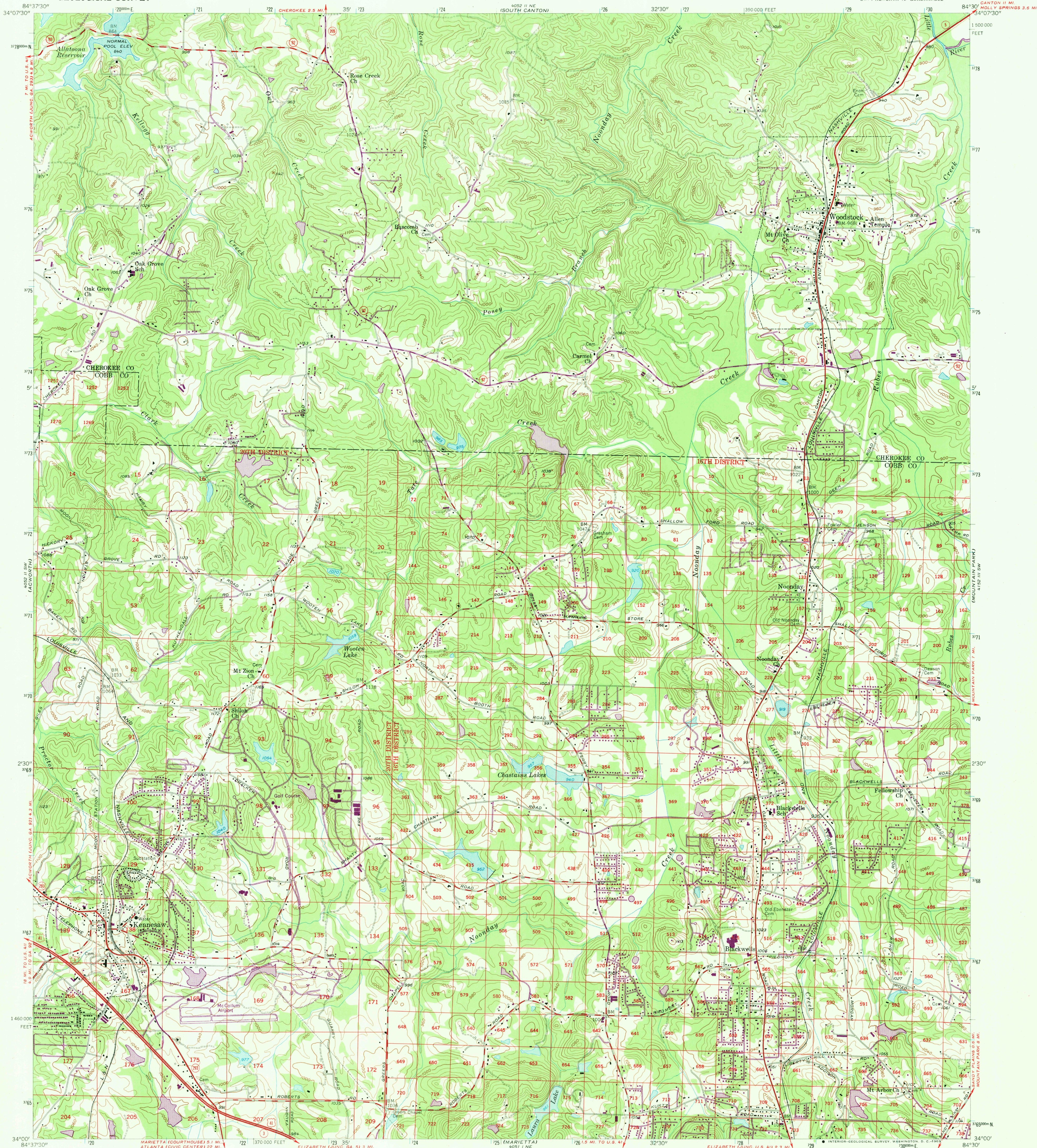


UNITED STATES
DEPARTMENT OF THE INTERIOR
GEOLOGICAL SURVEY

KENNESAW QUADRANGLE
GEORGIA
7.5 MINUTE SERIES (TOPOGRAPHIC)
SW 1/4 ACWORTH 15' QUADRANGLE



Mapped, edited, and published by the Geological Survey
Control by USGS, USC&GS, and Georgia Geodetic Survey
Topography from aerial photographs by Kelsch plotter
Aerial photographs taken 1955. Field check 1956
Polyconic projection. 1927 North American datum
10,000-foot grid based on Georgia coordinate system,
west zone. 1000-meter Universal Transverse Mercator
grid ticks, zone 16, shown in blue
Land lines from information supplied by
Cobb County Roads and Revenues Commission
Revisions shown in purple compiled from aerial photographs
taken 1968. This information not field checked

UTM GRID AND 1968 MAGNETIC NORTH
DECLINATION AT CENTER OF SHEET

SCALE 1:24,000
1 0 1000 2000 3000 4000 5000 6000 7000 FEET
1 0 1 2 KILOMETER
CONTOUR INTERVAL 20 FEET
DATUM IS MEAN SEA LEVEL

THIS MAP COMPLIES WITH NATIONAL MAP ACCURACY STANDARDS
FOR SALE BY U.S. GEOLOGICAL SURVEY, WASHINGTON, D. C. 20242
A FOLDER DESCRIBING TOPOGRAPHIC MAPS AND SYMBOLS IS AVAILABLE ON REQUEST

USGS
Historical File
Topographic Division
ROAD CLASSIFICATION
Heavy-duty — Light-duty
Medium-duty — Unimproved dirt
U.S. Route — State Route
KENNESAW, GA.
SE 1/4 ACWORTH 15' QUADRANGLE
N 3400—W 8430/7.5
1956
PHOTOREVISED 1968
AMS 4052 II SE—SERIES V845
2685
SEP 2 & 1969