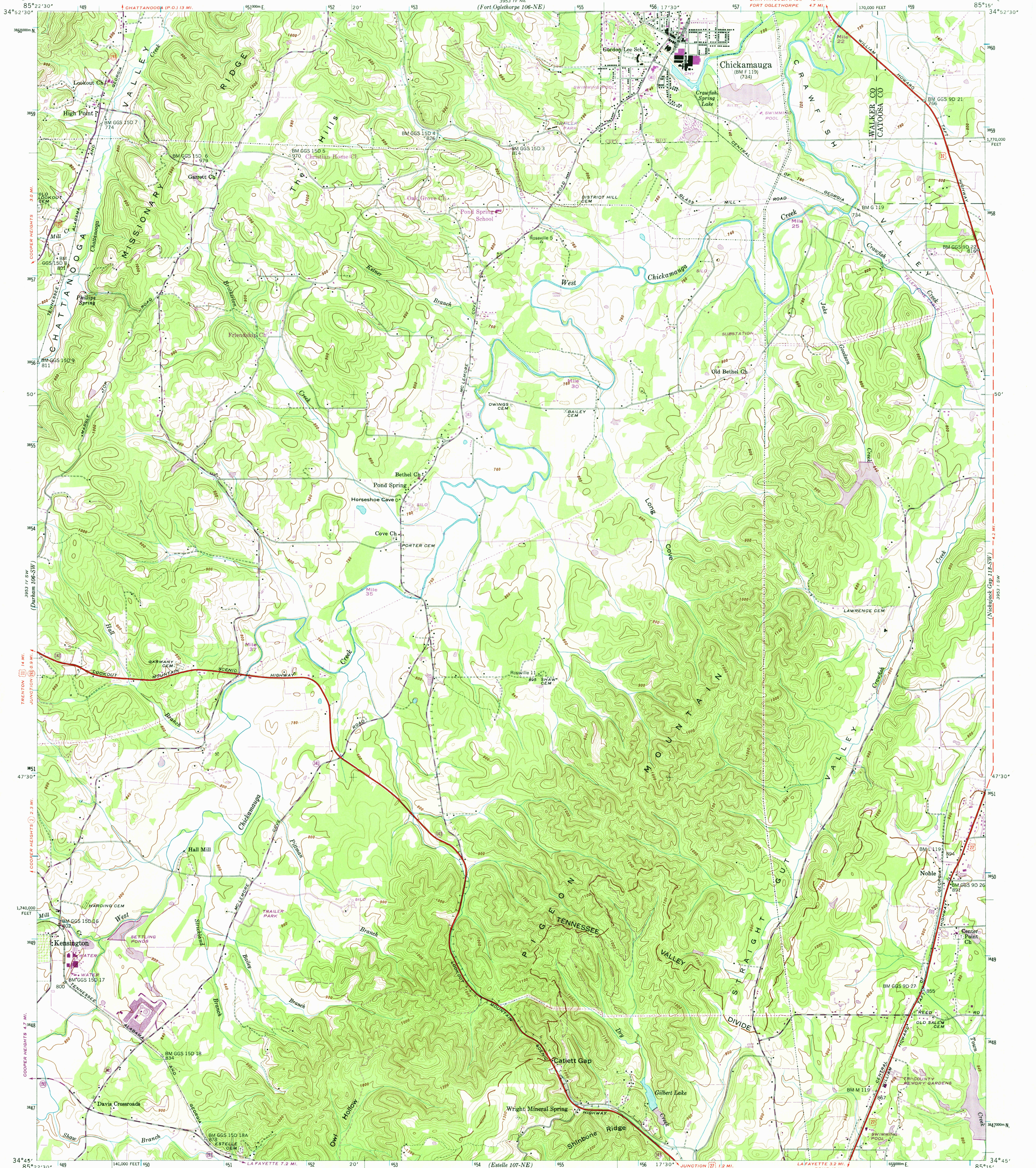


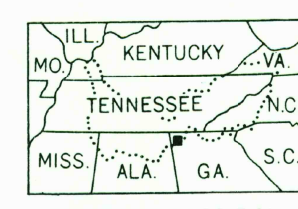
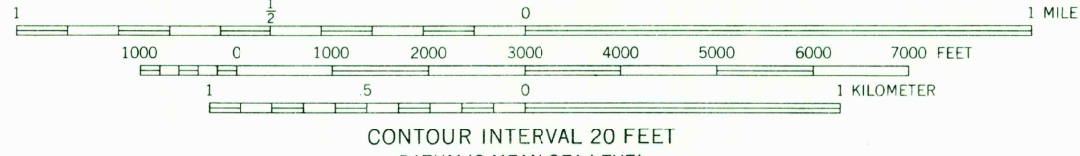
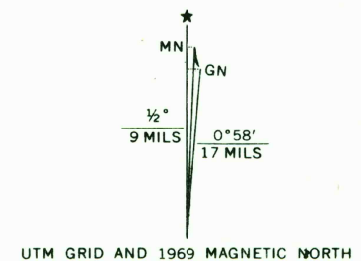
UNITED STATES
DEPARTMENT OF THE INTERIOR
GEOLOGICAL SURVEY

UNITED STATES
TENNESSEE VALLEY AUTHORITY
MAPS AND SURVEYS BRANCH

KENSINGTON QUADRANGLE
GEORGIA
7.5 MINUTE SERIES (TOPOGRAPHIC) 106-SE



Mapped and edited by Tennessee Valley Authority
Published by the Geological Survey
Control by USC&GS, USGS, GGS, and TVA
Topography by USGS and TVA by photogrammetric methods.
Map field checked by TVA, 1946
Polyconic projection, 1927 North American datum
10,000 foot grid based on Georgia (West)
rectangular coordinate system
1000 meter Universal Transverse Mercator Grid ticks,
Zone 16, shown in blue
Revisions shown in purple and recompilation of woodland
areas compiled by the Tennessee Valley Authority from aerial
photographs taken 1969. This information not field checked
Fine purple dashed lines indicate selected fence and field lines
visible on aerial photography. This information is unchecked



ROAD CLASSIFICATION

Heavy-duty	Poor motor road
Medium-duty	Wagon and jeep track
Light-duty	Foot trail

U. S. Route
State Route
In developed areas, only through roads are classified

KENSINGTON, GA.
N3445-W8515/7.5
1946
PHOTOREVISED 1969
AMS 3953 IV SE-SERIES V845

FOR SALE BY U. S. GEOLOGICAL SURVEY, RESTON, VIRGINIA 22092
AND BY U. S. TENNESSEE VALLEY AUTHORITY, CHATTANOOGA, TENN. 37401 OR KNOXVILLE, TENN. 37902.
A FOLDER DESCRIBING TOPOGRAPHIC MAPS AND SYMBOLS IS AVAILABLE ON REQUEST