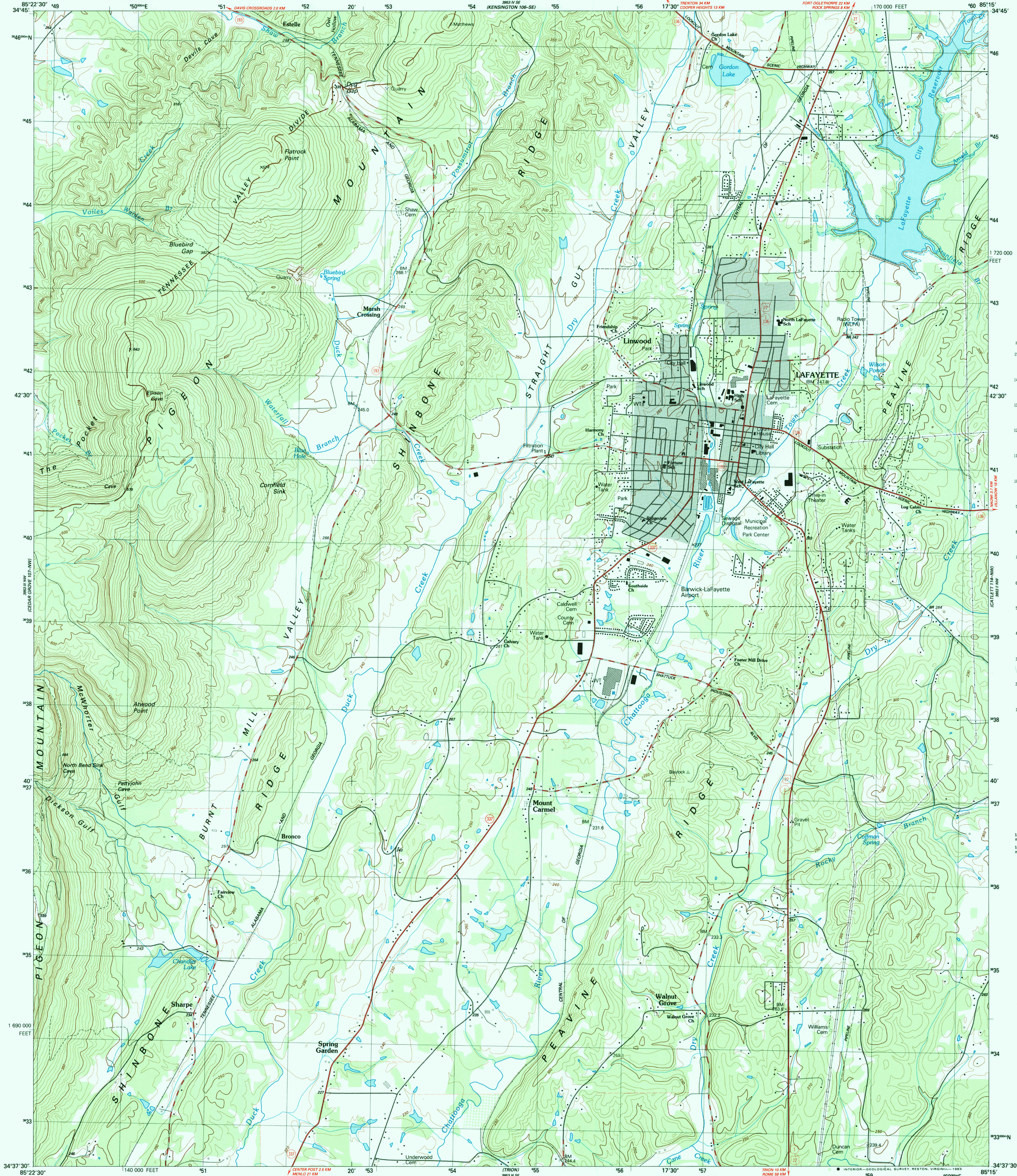


UNITED STATES  
DEPARTMENT OF THE INTERIOR  
GEOLOGICAL SURVEY

STATE OF GEORGIA  
DEPARTMENT OF NATURAL RESOURCES  
GEORGIA GEOLOGIC SURVEY

LAFAYETTE QUADRANGLE  
GEORGIA—WALKER CO.  
7.5 MINUTE SERIES (TOPOGRAPHIC) 107-NE



CONVERSION SCALES

Feet	Meters
15000	4500
14000	4267
13000	4000
12000	3658
11000	3353
10000	3048
9000	2743
8000	2438
7000	2134
6000	1829
5000	1524
4000	1219
3000	914
2000	609
1000	305
500	152
200	61
100	30
0	0

To convert feet to meters multiply by .3048  
To convert meters to feet multiply by 3.2808

Produced by the United States Geological Survey  
Control by USGS, NOS/NOAA, Tennessee Valley Authority,  
and Georgia Geodetic Survey  
Compiled by photogrammetric methods from aerial photographs  
taken 1975. Field checked 1976. Map edited 1983  
Supersedes TVA-USGS map dated 1946  
Projection and 10,000-foot grid ticks: Georgia coordinate system,  
west zone (transverse Mercator). 1000-meter Universal Transverse  
Mercator grid, zone 16. 1927 North American Datum  
To place on the predicted North American Datum 1983 move  
the projection lines 7 meters south and 4 meters west as  
shown by dashed corner ticks  
Area covered by dashed light-blue pattern is subject to controlled  
inundation to 254 meters  
Fine red dashed lines indicate selected fence and field lines where  
generally visible on aerial photographs. This information is unchecked  
Gray tint indicates areas in which only landmark buildings are shown

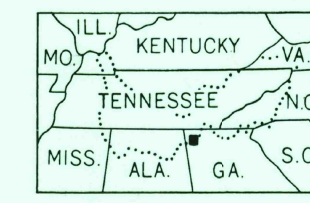
UTM GRID and 1983 MAGNETIC NORTH  
DECLINATION AT CENTER OF SHEET

SCALE 1:24 000

1 1000 5 0 5 KILOMETERS 1 2000  
0 1000 2000 3000 4000 5000 6000 7000 8000 9000 10 000  
MILES  
0 1000 2000 3000 4000 5000 6000 7000 8000 9000 10 000  
FEET

CONTOUR INTERVAL 10 METERS  
NATIONAL GEODETTIC VERTICAL DATUM OF 1929  
CONTROL ELEVATIONS SHOWN TO THE NEAREST 0.1 METER  
OTHER ELEVATIONS SHOWN TO THE NEAREST METER

APR 27 1994



QUADRANGLE LOCATION

CONTOURS AND ELEVATIONS  
IN METERS

ROAD CLASSIFICATION (TVA 107-NE)

Primary highway, hard surface	Light-duty road, hard or improved surface
Secondary highway, hard surface	Unimproved road
Interstate Route	U. S. Route
	State Route

LAFAYETTE, GA.  
(FORMERLY ESTELLE)  
34085-F3-TM-024  
1983  
DMA 3953 III NE—SERIES V845

THIS MAP COMPLIES WITH NATIONAL MAP ACCURACY STANDARDS  
FOR SALE BY U. S. GEOLOGICAL SURVEY, RESTON, VIRGINIA 22092  
AND U. S. TENNESSEE VALLEY AUTHORITY, CHATTANOOGA, TENN. 37401 OR KNOXVILLE, TENN. 37902  
A FOLDER DESCRIBING TOPOGRAPHIC MAPS AND SYMBOLS IS AVAILABLE ON REQUEST