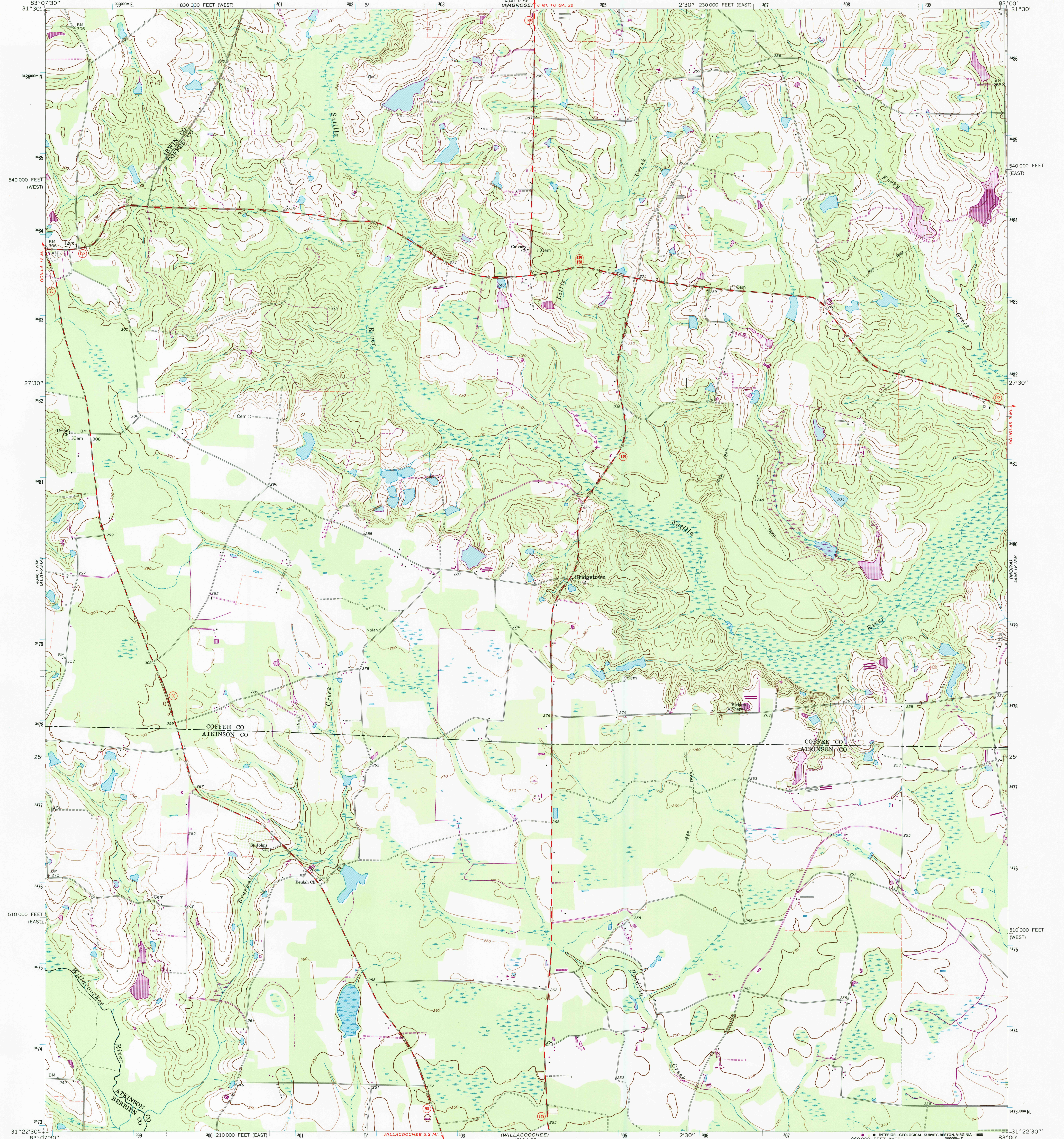


OCILLA 1/2 MI.

WILKINS 1/2 MI.

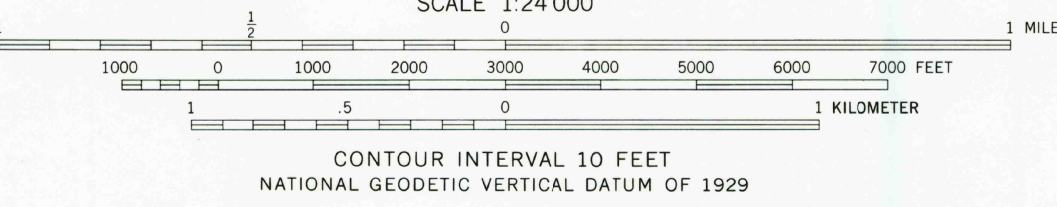
UNITED STATES
DEPARTMENT OF THE INTERIOR
GEOLOGICAL SURVEY

LAX QUADRANGLE
GEORGIA
7.5 MINUTE SERIES (TOPOGRAPHIC)



Mapped, edited, and published by the Geological Survey
Control by USGS, NOS/NOAA, and Georgia Geodetic Survey
Topography by photogrammetric methods from aerial photographs taken 1971. Field checked 1972
Projection: Georgia coordinate system, east zone (transverse Mercator) 10,000-foot grid ticks based on Georgia coordinate system, east and west zones 1000-meter Universal Transverse Mercator grid ticks, zone 17, shown in blue. 1927 North American datum To place on the predicted North American Datum 1983 move the projection lines 17 meters south and 13 meters west as shown by dashed corner ticks
Fine red dashed lines indicate selected fence and field lines where generally visible on aerial photographs. This information is unchecked

Revisions shown in purple and woodland compiled in cooperation with State of Georgia agencies from aerial photographs taken 1983 and other sources. This information not field checked. Map edited 1988



THIS MAP COMPLIES WITH NATIONAL MAP ACCURACY STANDARDS
FOR SALE BY U. S. GEOLOGICAL SURVEY
DENVER, COLORADO 80225 OR RESTON, VIRGINIA 22092
A FOLDER DESCRIBING TOPOGRAPHIC MAPS AND SYMBOLS IS AVAILABLE ON REQUEST

ROAD CLASSIFICATION

Primary highway, hard surface	Light-duty road, hard or improved surface
Secondary highway, hard surface	Unimproved road
Interstate Route	U. S. Route
	State Route

UTM GRID AND 1988 MAGNETIC NORTH DECLINATION AT CENTER OF SHEET

GEORGIA
QUADRANGLE LOCATION

USGS MMD HISTORICAL MAP
MAR 15 1989
REC'D FILE COPY

LAX, GA.
31083-D1-TF-024
1972
PHOTOREVISED 1988
DMA 4346 1 NE - SERIES V845