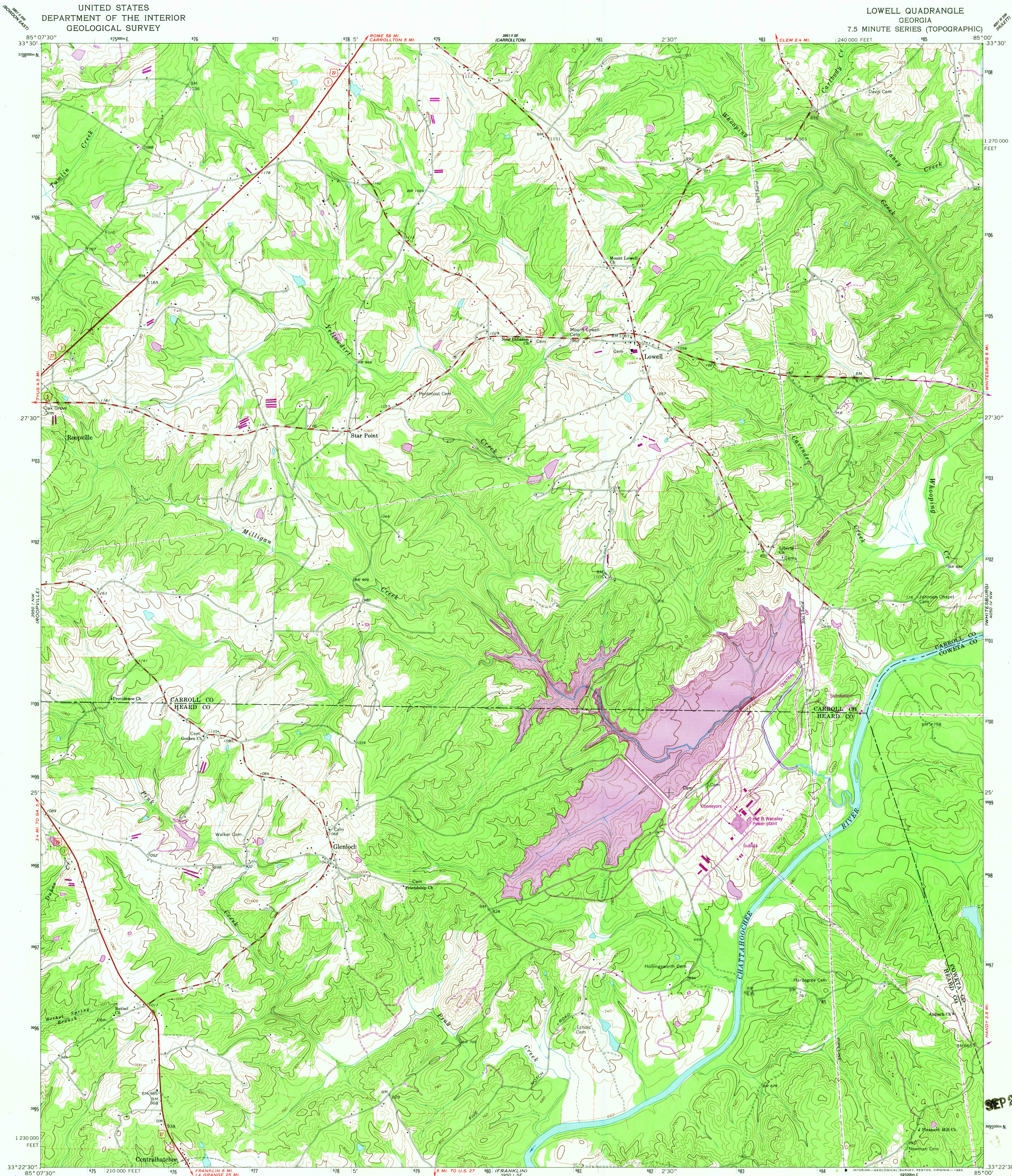
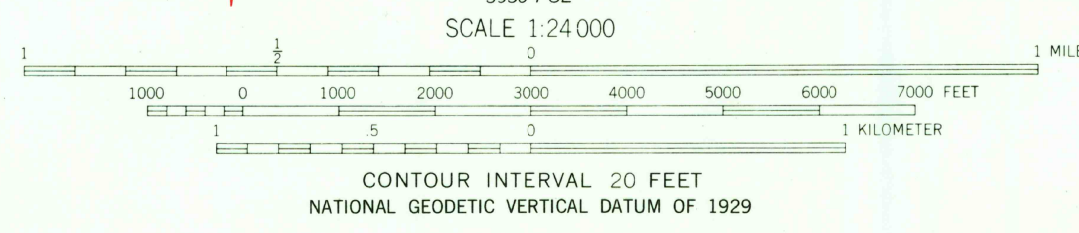
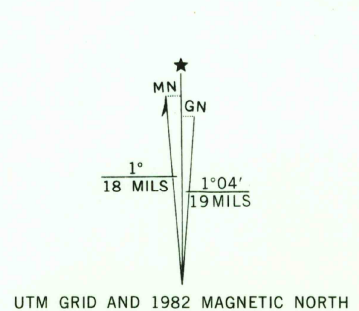


UNITED STATES
DEPARTMENT OF THE INTERIOR
GEOLOGICAL SURVEY

LOWELL QUADRANGLE
GEORGIA
7.5 MINUTE SERIES (TOPOGRAPHIC)



Mapped, edited, and published by the Geological Survey
Control by USGS, NOS/NOAA, USCE, and Georgia Geodetic Survey
Topography by photogrammetric methods from aerial photographs
taken 1962. Field checked 1964
Polyconic projection. 10,000-foot grid ticks based on Georgia coordinate
system, west zone. 1000-meter Universal Transverse Mercator grid
ticks, zone 16, shown in blue. 1927 North American Datum
To place on the predicted North American Datum 1983 move the
projection lines 11 meters south and 6 meters west as shown by
dashed corner ticks
Fine red dashed lines indicate selected fence and field lines where
generally visible on aerial photographs. This information is uncheck
Revisions shown in purple and woodland compiled from aerial
photographs taken 1981 and other sources. This information
not field checked. Map edited 1982



ROAD CLASSIFICATION

Heavy-duty	Light duty
Medium-duty	Unimproved dirt
U.S. Route	State Route

LOWELL, GA.
N3322.5-W8500/7.5
1964
PHOTOREVISED 1982
DMA 3950 1 NE-SERIES V845