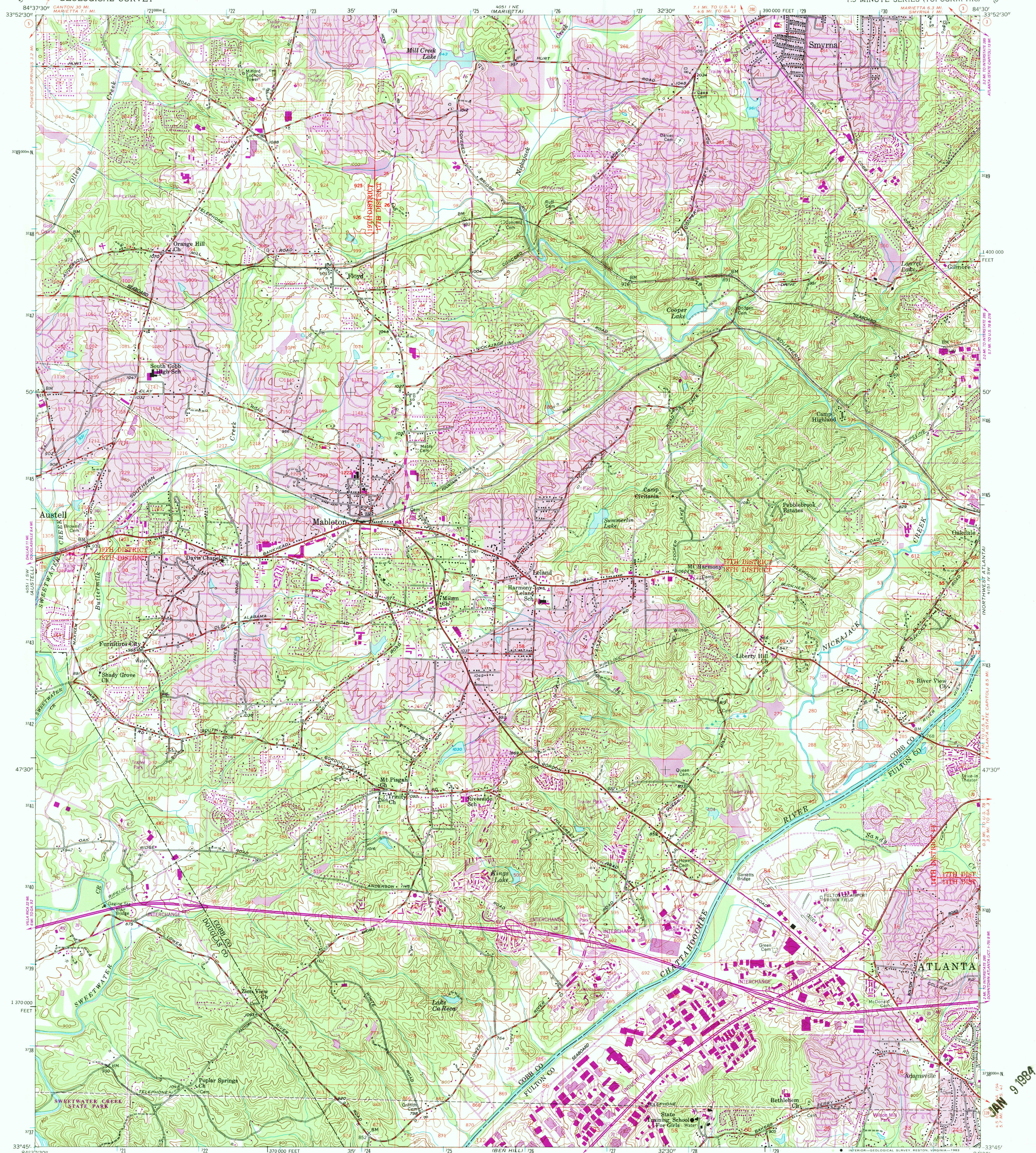


UNITED STATES
DEPARTMENT OF THE INTERIOR
GEOLOGICAL SURVEY

MABLETON QUADRANGLE
GEORGIA
7.5 MINUTE SERIES (TOPOGRAPHIC)



Mapped, edited, and published by the Geological Survey

Control by USGS, NOS/NOAA, Georgia Geodetic Survey, and City of Atlanta

Topography by photogrammetric methods from aerial photographs taken 1952. Field checked 1954

Polyconic projection. 10,000-foot grid ticks based on Georgia coordinate system, west zone. 1000-meter Universal Transverse Mercator grid ticks, zone 16, shown in blue. 1927 North American Datum. To place on the predicted North American Datum 1983 move the projection lines 10 meters south and 7 meters west as shown by dashed corner ticks

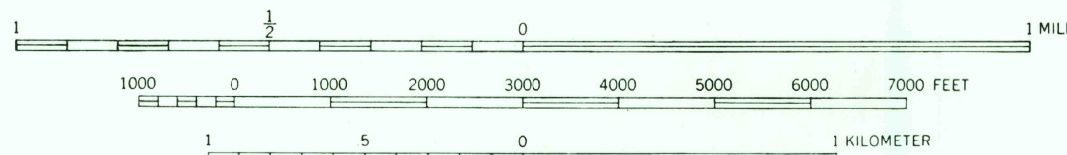
Land lines from information supplied by Cobb County Roads and Revenues Commission and Atlanta-Fulton County Joint Planning Board

There may be private inholdings within the boundaries of the National or State reservations shown on this map

Revisions shown in purple and woodland compiled from aerial photographs taken 1981 and other sources. This information not field checked. Map edited 1982

Purple tint indicates extension of urban areas

SCALE 1:24000



CONTOUR INTERVAL 20 FEET
NATIONAL GEODETIC VERTICAL DATUM OF 1929

THIS MAP COMPLIES WITH NATIONAL MAP ACCURACY STANDARDS
FOR SALE BY U.S. GEOLOGICAL SURVEY, RESTON, VIRGINIA 22092
A FOLDER DESCRIBING TOPOGRAPHIC MAPS AND SYMBOLS IS AVAILABLE ON REQUEST

ROAD CLASSIFICATION
Heavy-duty ——— Light-duty ———
Medium-duty ——— Unimproved dirt ———
Interstate Route ——— U.S. Route ——— State Route ———



QUADRANGLE LOCATION

MABLETON, GA.
33084-G5-TF-024

1954
PHOTOREVISED 1982
DMA 4051 1 SE - SERIES V845

JAN 9 1984