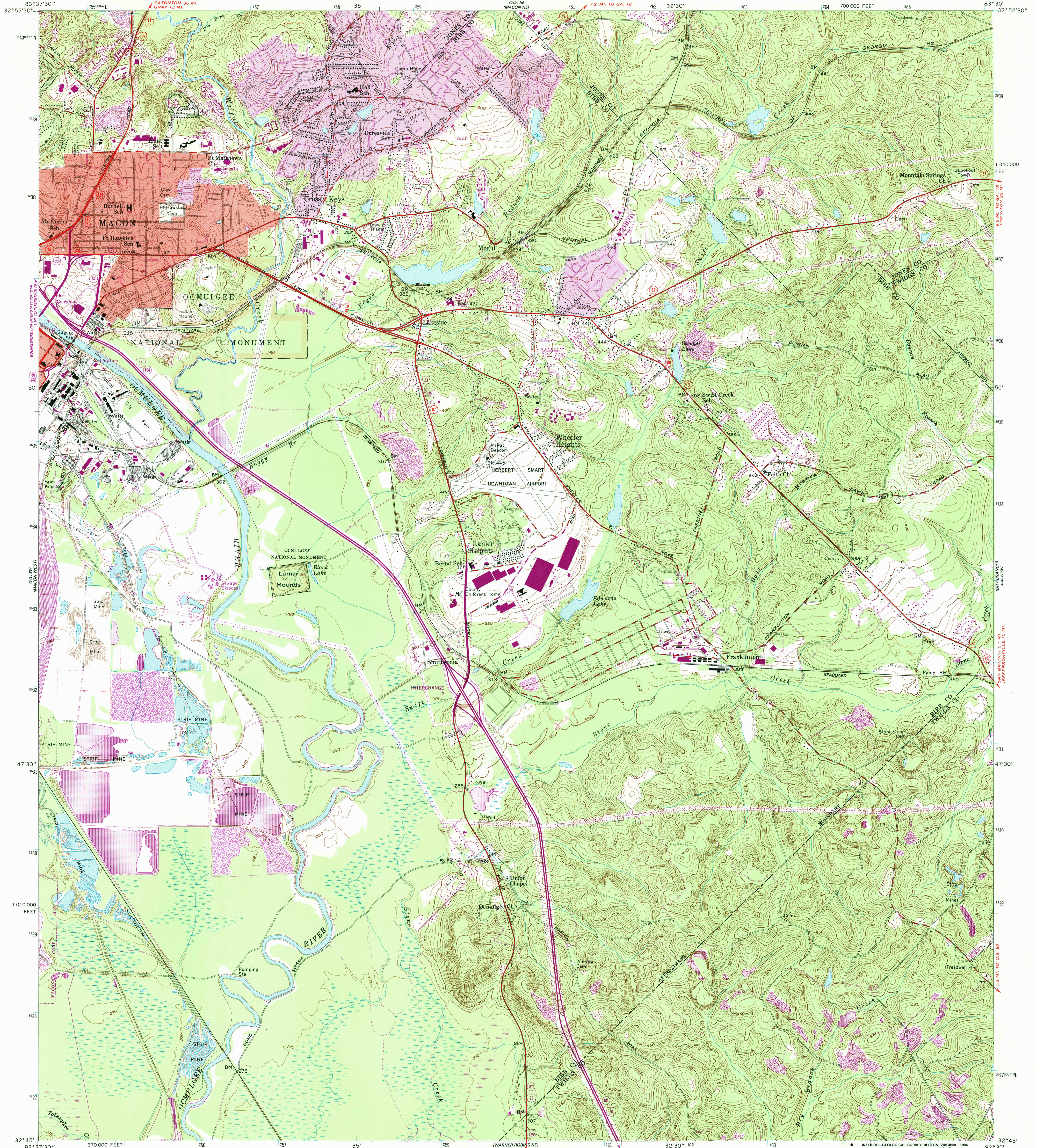
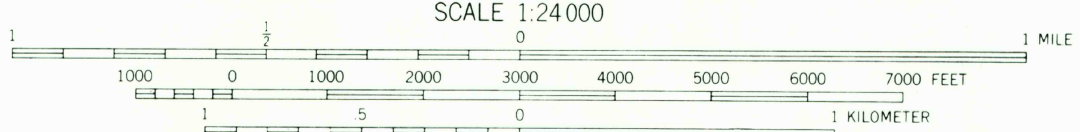
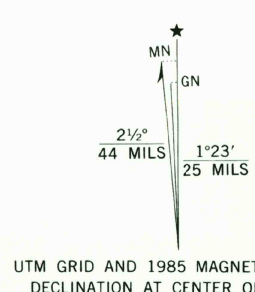


UNITED STATES  
DEPARTMENT OF THE INTERIOR  
GEOLOGICAL SURVEY

MACON EAST QUADRANGLE  
GEORGIA  
7.5 MINUTE SERIES (TOPOGRAPHIC)



Mapped, edited, and published by the Geological Survey  
Control by USGS, NOS/NOAA, and Georgia Geodetic Survey  
Topography by photogrammetric methods from aerial  
photographs taken 1954. Field checked 1956  
Polycyclic projection. 10,000-foot grid ticks based on Georgia  
coordinate system, west zone  
1000-meter Universal Transverse Mercator grid ticks,  
zone 17, shown in blue  
1927 North American Datum  
To place on the predicted North American Datum 1983  
move the projection lines 13 meters south and  
10 meters west as shown by dashed corner ticks  
Fine red dashed lines indicate selected fence and field lines where  
generally visible on aerial photographs. This information is unchecked  
Red tint indicates areas in which only landmark buildings are shown  
There may be private inholdings within the boundaries of  
the National or State reservations shown on this map



CONTOUR INTERVAL 10 FEET  
NATIONAL GEODETIC VERTICAL DATUM OF 1929

THIS MAP COMPLIES WITH NATIONAL MAP ACCURACY STANDARDS  
FOR SALE BY U. S. GEOLOGICAL SURVEY, RESTON, VIRGINIA 22092  
A FOLDER DESCRIBING TOPOGRAPHIC MAPS AND SYMBOLS IS AVAILABLE ON REQUEST



Revisions shown in purple and woodblock printing  
with State of Georgia agencies from aerial photographs taken 1981  
and other sources. This information not field checked  
Map edited 1985  
Purple tint indicates extension of urban areas

ROAD CLASSIFICATION  
Primary highway, hard surface  
Secondary highway, hard surface  
Interstate Route  
Light-duty road, hard or improved surface  
Unimproved road  
U. S. Route  
State Route  
MACON EAST, GA.  
SE/4 MACON 15' QUADRANGLE  
32083-G5-TF-024  
1956  
PHOTOREVISED 1985  
DMA 4249 1 SE - SERIES V845