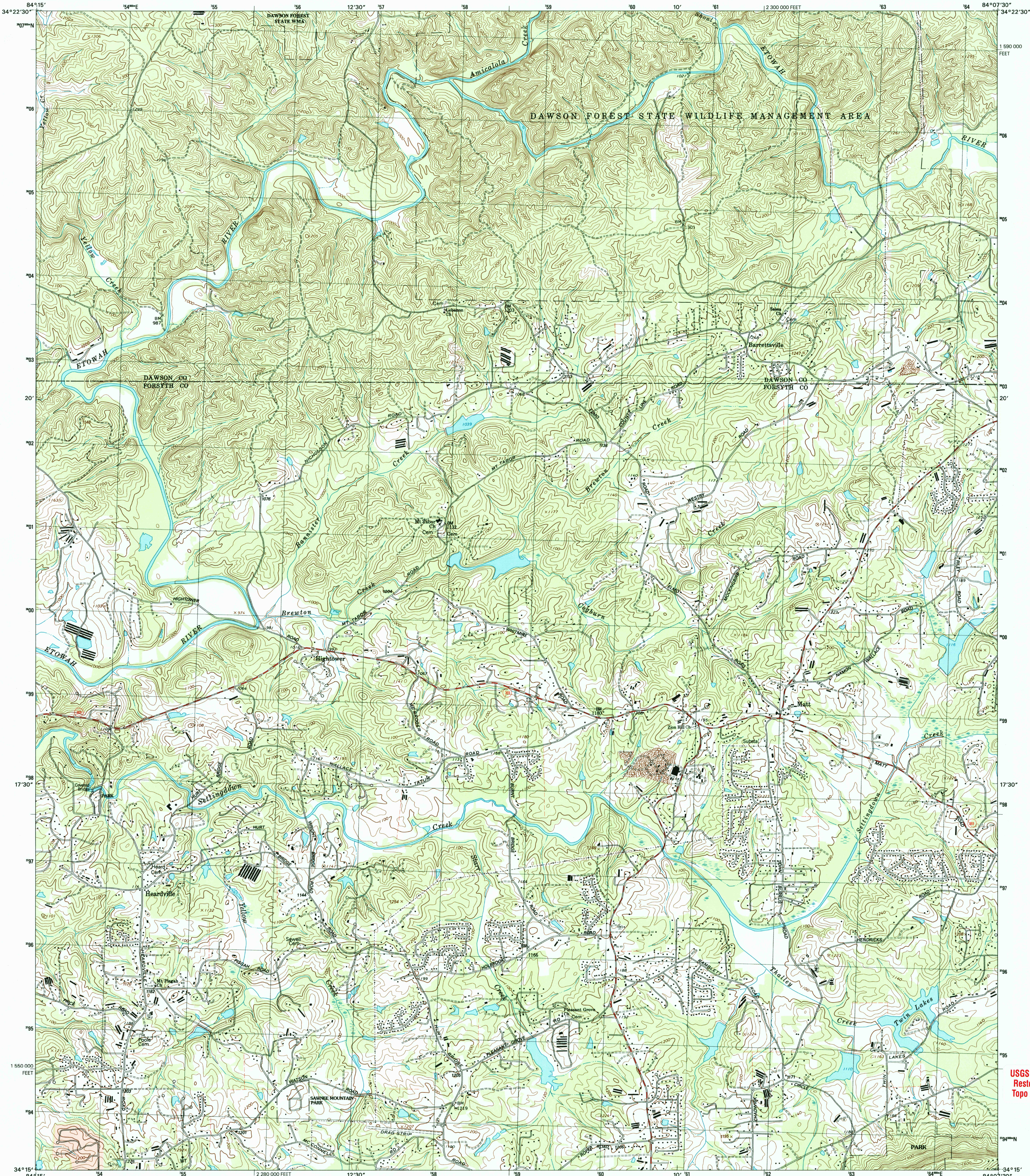


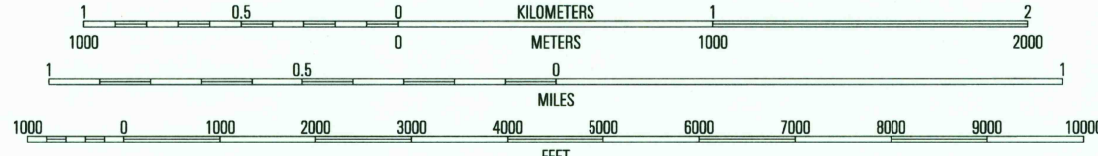
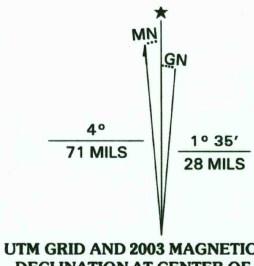


U.S. DEPARTMENT OF THE INTERIOR
U.S. GEOLOGICAL SURVEY

MATT QUADRANGLE
GEORGIA
7.5-MINUTE SERIES (TOPOGRAPHIC)



Produced by the United States Geological Survey
Topography compiled 1956. Planimetry derived from imagery taken 1999 and other sources. Survey control current as of 1964. Boundaries current as of 2003.
North American Datum of 1983 (NAD 83). Projection and 1000-meter grid: Universal Transverse Mercator, zone 16. 10 000-foot ticks: Georgia Coordinate System of 1983 (west zone).
North American Datum of 1927 (NAD 27) is shown by dashed corner ticks. The values of the shift between NAD 83 and NAD 27 for 7.5-minute intersections are obtainable from National Geodetic Survey NADCON software.
There may be private inholdings within the boundaries of the National or State reservations shown on this map.



CONTOUR INTERVAL 20 FEET
NATIONAL GEODETIC VERTICAL DATUM OF 1929
(THE DIFFERENCE BETWEEN THE NATIONAL GEODETIC VERTICAL DATUM OF 1929 AND THE NORTH AMERICAN VERTICAL DATUM OF 1988 IS MINIMAL)
TO CONVERT FROM FEET TO METERS, MULTIPLY BY 0.3048



1	2	3
4	5	6
7	8	9

ROAD CLASSIFICATION
Primary highway hard surface
Secondary highway hard surface
Light-duty road, hard or improved surface
Unimproved road
Interstate Route
U.S. Route
State Route

RECEIVED
JUN 17 2003
HISTORICAL MAPS
USGS-100

MATT, GA
1999

NIMA 41521 SW-SERIES V845

THIS MAP COMPLIES WITH NATIONAL MAP ACCURACY STANDARDS
FOR SALE BY U.S. GEOLOGICAL SURVEY, P.O. BOX 25286, DENVER, COLORADO 80225
A FOLDER DESCRIBING TOPOGRAPHIC MAPS AND SYMBOLS IS AVAILABLE ON REQUEST

USGS Library
Reston, VA
Topo Archive

3 1818 00417793 5

4288640908746
X-24956-071-D-NES1