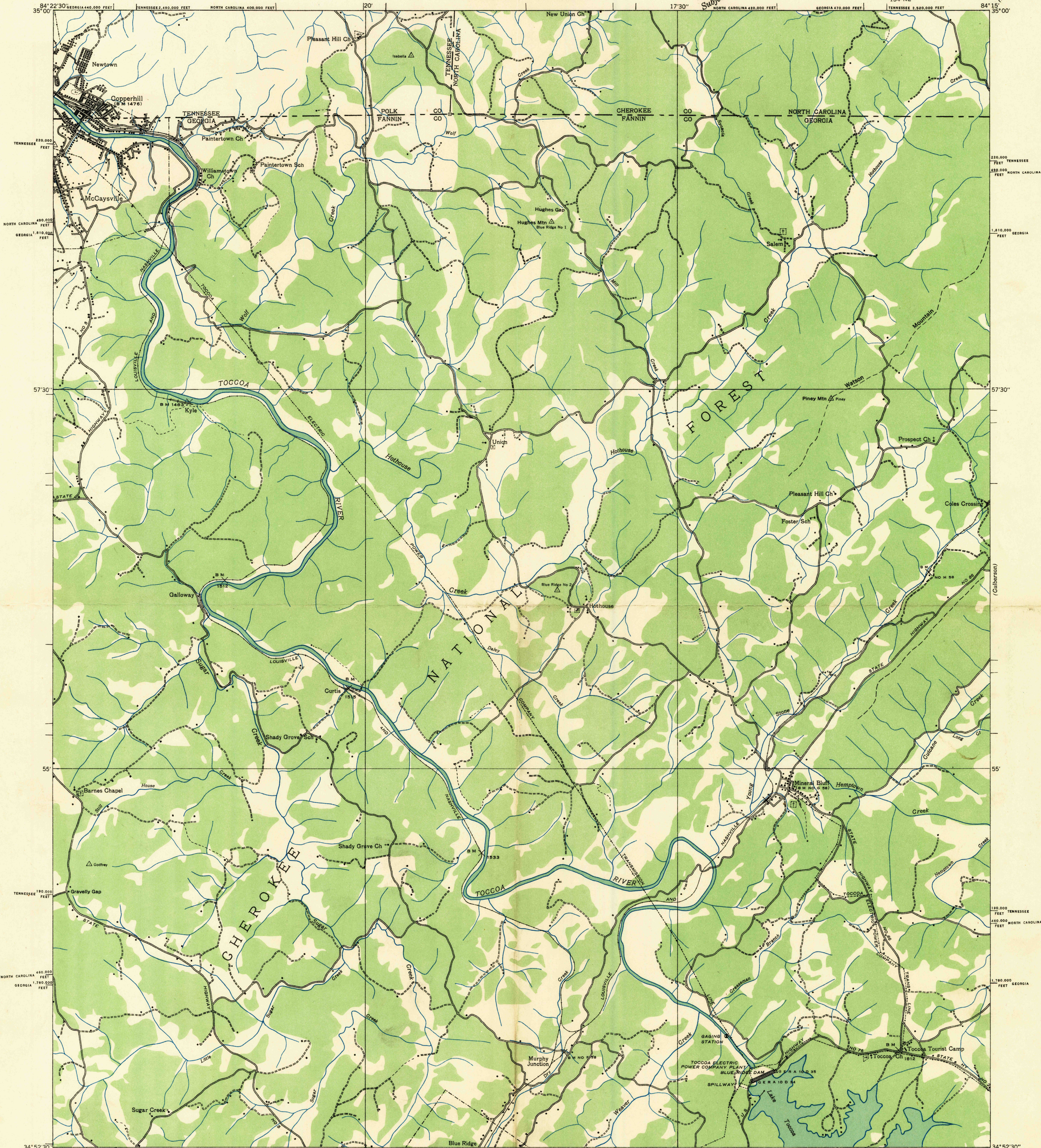
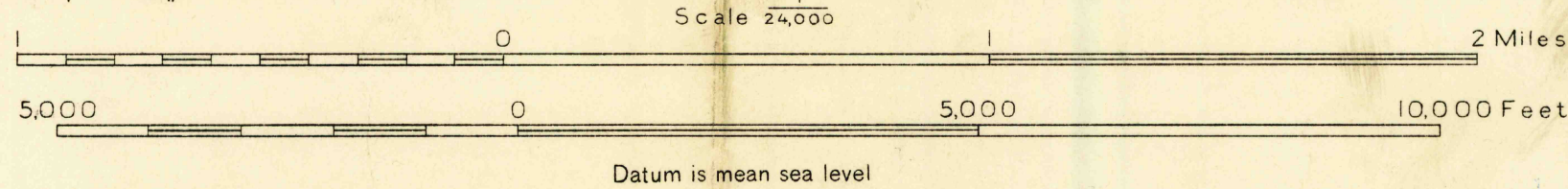


Advance sheet
Subject to correction



Albert Pike, Division Engineer
Compiled by U. S. Geological Survey from aerial photographs
Control by U. S. Geological Survey, U. S. Coast and Geodetic Survey,
and Ga. Em. Rel. Adm.
Field examination in 1935



11° NORTH CAROLINA 420,000 FEET
GEORGIA 470,000 FEET
TENNESSEE 2,520,000 FEET
Polyconic projection. 1927 North American datum
10,000 foot grid based on Georgia (West), Tennessee,
and North Carolina rectangular coordinate systems
Ridge line - - - - -
Trail - - - - -
USGS
Historical File
Topographic Division
MINERAL BLUFF, GA.-N. C.-TENN.
134-NE