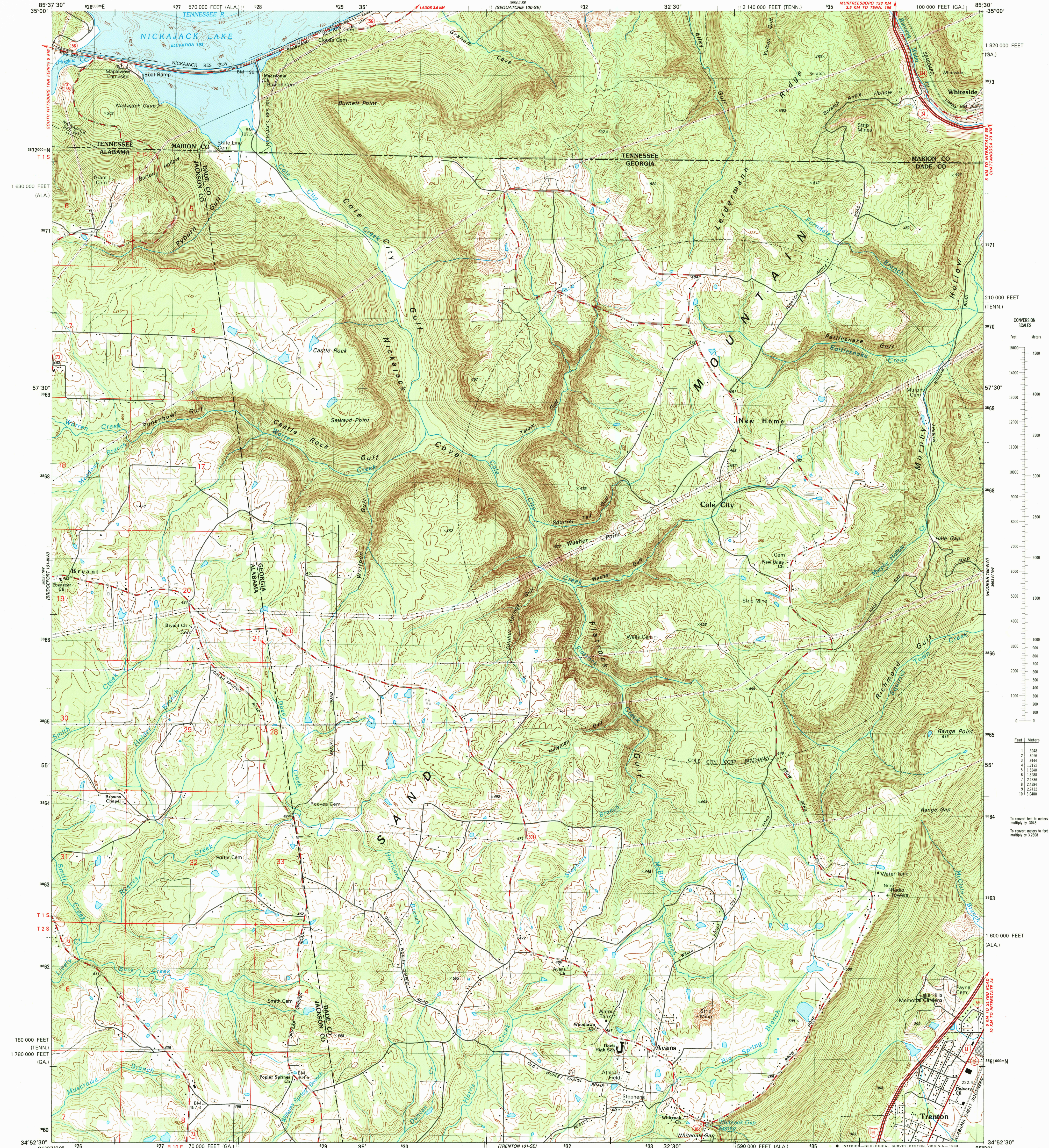


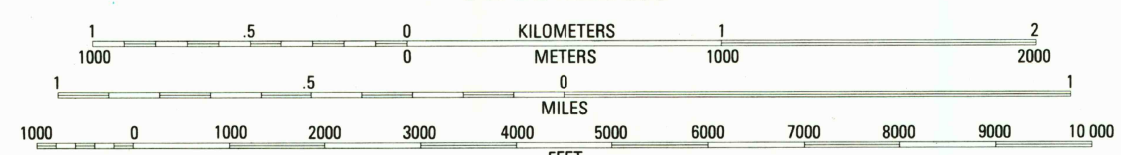
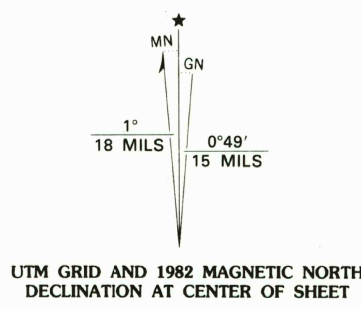
UNITED STATES
DEPARTMENT OF THE INTERIOR
GEOLOGICAL SURVEY

STATE OF GEORGIA
DEPARTMENT OF NATURAL RESOURCES
GEORGIA GEOLOGIC SURVEY

NEW HOME QUADRANGLE
GEORGIA-ALABAMA-TENNESSEE
7.5 MINUTE SERIES (TOPOGRAPHIC) 101-NE

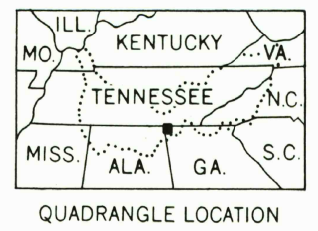


Produced by the United States Geological Survey
Control by USGS, NOS/NOAA, Tennessee Valley Authority, and Georgia Geodetic Survey
Compiled by photogrammetric methods from aerial photographs taken 1975. Field checked 1975. Map edited 1982
Supersedes Tennessee Valley Authority map dated 1970
Projection: Georgia coordinate system, west zone (transverse Mercator). 10,000-foot grid ticks based on Georgia coordinate system, west zone, Alabama coordinate system, east zone, and Tennessee coordinate system. 1000-meter Universal Transverse Mercator grid, zone 16. 1927 North American Datum
To place on the predicted North American Datum 1983 move the projection lines 6 meters south and 3 meters west as shown by dashed corner ticks
There may be private inholdings within the boundaries of the National or State reservations shown on this map



CONTOUR INTERVAL 5 METERS
DOTTED LINES REPRESENT 2.5-METER CONTOURS
NATIONAL GEODEIC VERTICAL DATUM OF 1929
CONTROL ELEVATIONS SHOWN TO THE NEAREST 0.1 METER
OTHER ELEVATIONS SHOWN TO THE NEAREST METER

THIS MAP COMPLIES WITH NATIONAL MAP ACCURACY STANDARDS
FOR SALE BY U. S. GEOLOGICAL SURVEY, RESTON, VIRGINIA 22092.
TENNESSEE DEPARTMENT OF CONSERVATION, DIVISION OF GEOLOGY, NASHVILLE, TENN. 37219,
AND U. S. TENNESSEE VALLEY AUTHORITY, CHATTANOOGA, TENN. 37401, OR KNOXVILLE, TENN. 37902
A FOLDER DESCRIBING TOPOGRAPHIC MAPS AND SYMBOLS IS AVAILABLE ON REQUEST



Primary highway, hard surface Light-duty road, hard or improved surface
Secondary highway, hard surface Unimproved road
Interstate Route U. S. Route State Route

NEW HOME, GA.-ALA.-TENN.
34085-HS-TM-024

1982

DMA 3853 | NE-SERIES V845