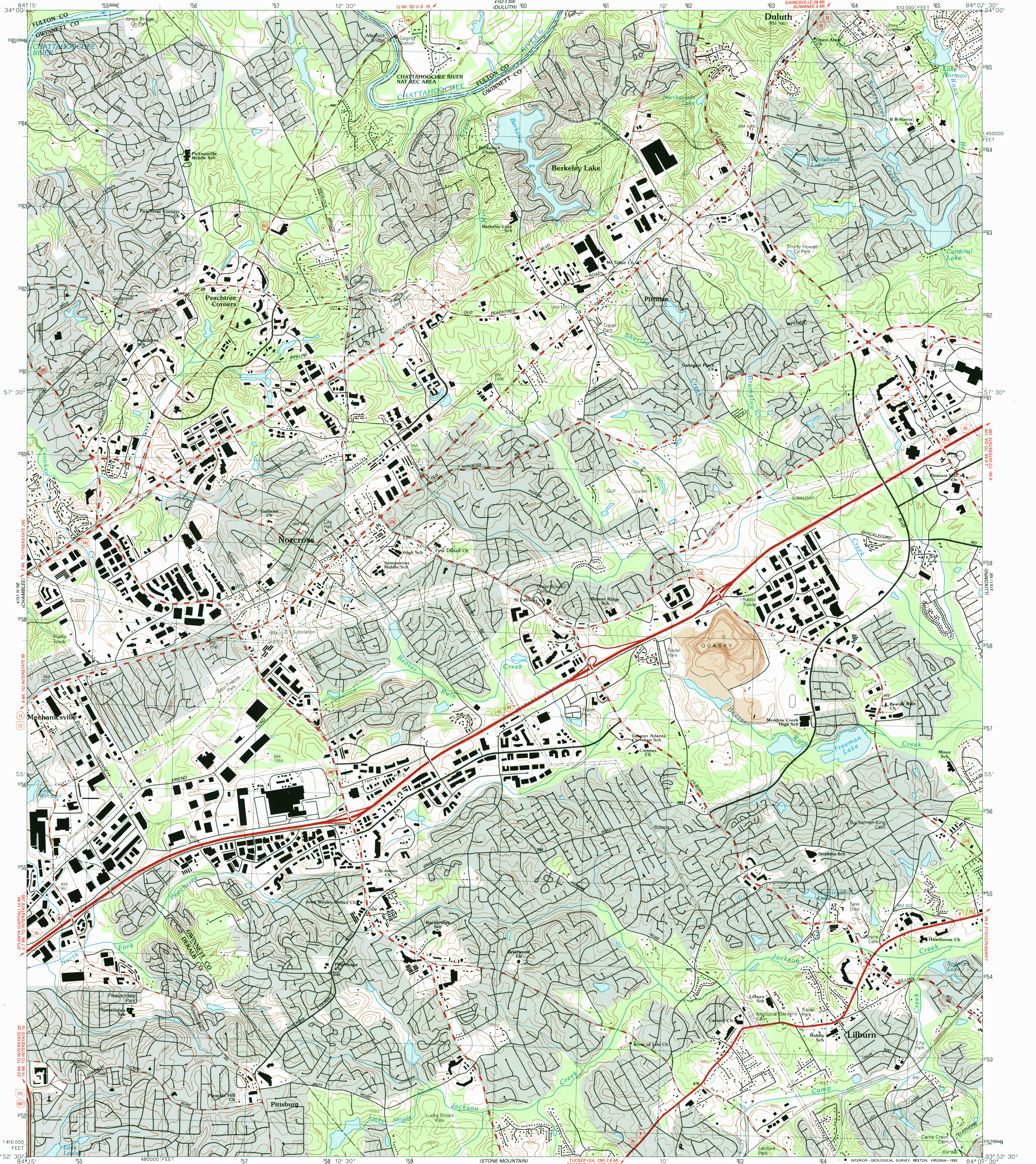


4151 15' 34° 00' 3765000

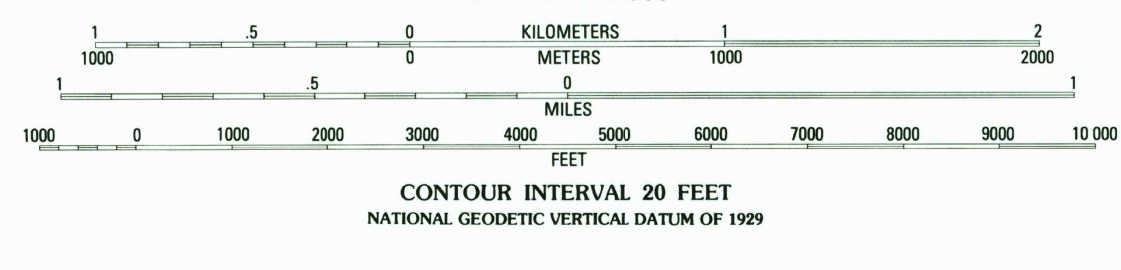
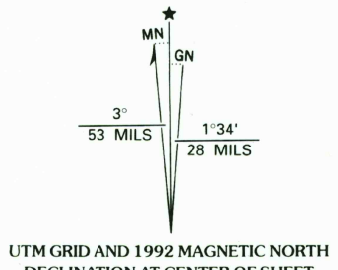
UNITED STATES
DEPARTMENT OF THE INTERIOR
GEOLOGICAL SURVEY

NORCROSS QUADRANGLE
GEORGIA
7.5 MINUTE SERIES (TOPOGRAPHIC)

4151 15' 34° 00' 3765000



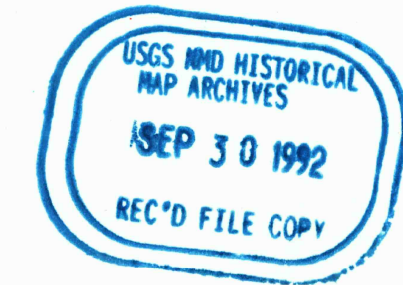
Produced by the United States Geological Survey
Control by USGS, NOS/NOAA, Georgia Geodetic Survey and City of Atlanta
Topography by photogrammetric methods from aerial photographs
taken 1955. Revised from aerial photographs taken 1988. Field checked
1991. Map edited 1992
Projection and 10,000-foot grid ticks: Georgia coordinate
system, west zone (transverse Mercator)
1000-meter Universal Transverse Mercator grid, zone 16
1927 North American Datum
The difference between 1927 North American Datum and North
American Datum of 1983 (NAD 83) for 7.5-minute intersections
is given in USGS Bulletin 1875. The NAD 83 is shown by
dashed corner ticks
There may be private inholdings within the boundaries of
the National or State reservations shown on this map
Gray tint indicates areas in which only landmark buildings are shown



COMPLIES WITH U.S. GEOLOGICAL SURVEY STANDARDS FOR SPATIAL ACCURACY - CLASS 2
FOR SALE BY U.S. GEOLOGICAL SURVEY
DENVER, COLORADO 80225, OR RESTON, VIRGINIA 22092
A FOLDER DESCRIBING TOPOGRAPHIC MAPS AND SYMBOLS IS AVAILABLE ON REQUEST



ROAD CLASSIFICATION	
Primary highway, hard surface	Light-duty road, hard or improved surface
Secondary highway, hard surface	Unimproved road
Interstate Route	U. S. Route
	State Route



NORCROSS, GA.
33084-H2-TF-024
1992

DMA 4151 I NW-SERIES V845