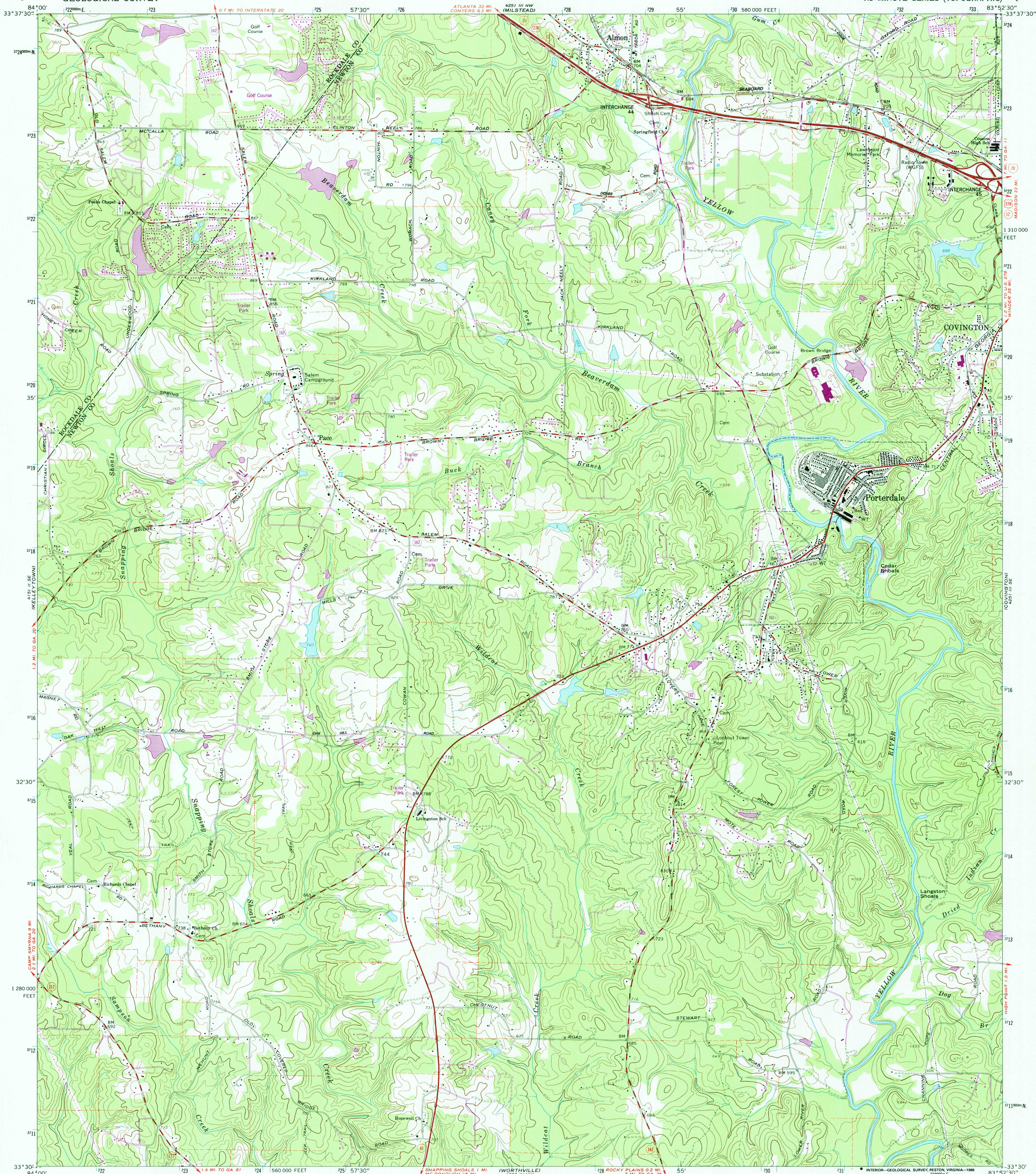


UNITED STATES  
DEPARTMENT OF THE INTERIOR  
GEOLOGICAL SURVEY

PORTERDALE QUADRANGLE  
GEORGIA  
7.5 MINUTE SERIES (TOPOGRAPHIC)



Mapped, edited, and published by the Geological Survey  
Control by USGS, NOS/NOAA, and Georgia Geodetic Survey  
Topography by photogrammetric methods from aerial  
photographs taken 1962. Field checked 1964  
Polyconic projection. 10,000-foot grid ticks based on Georgia  
coordinate system, west zone  
1000-meter Universal Transverse Mercator grid ticks,  
zone 17, shown in blue  
1927 North American Datum  
To place on the predicted North American Datum 1983  
move the projection lines 11 meters south and  
9 meters west as shown by dashed corner ticks  
Fine red dashed lines indicate selected fence and field lines where  
generally visible on aerial photographs. This information is unchecked

Revisions shown in purple and woodland compiled in cooperation  
with State of Georgia agencies from aerial photographs taken 1981 and  
other sources. This information not field checked. Map edited 1985

THIS MAP COMPLIES WITH NATIONAL MAP ACCURACY STANDARDS  
FOR SALE BY U.S. GEOLOGICAL SURVEY, RESTON, VIRGINIA 22092  
A FOLDER DESCRIBING TOPOGRAPHIC MAPS AND SYMBOLS IS AVAILABLE ON REQUEST

ROAD CLASSIFICATION  
Heavy-duty ——— Light-duty ———  
Medium-duty ——— Unimproved dirt ———  
Interstate Route U.S. Route State Route

UTM GRID AND 1985 MAGNETIC NORTH  
DECLINATION AT CENTER OF SHEET

SCALE 1:24,000  
CONTOUR INTERVAL 20 FEET  
NATIONAL GEODETIC VERTICAL DATUM OF 1929

U.S. GEOLOGICAL SURVEY  
MAR 28 1986  
REC'D FILE COPY

PORTERDALE, GA.  
33083-EB-TF-024  
1964  
PHOTOREVISED 1985  
DMA 4251 III SW—SERIES V845