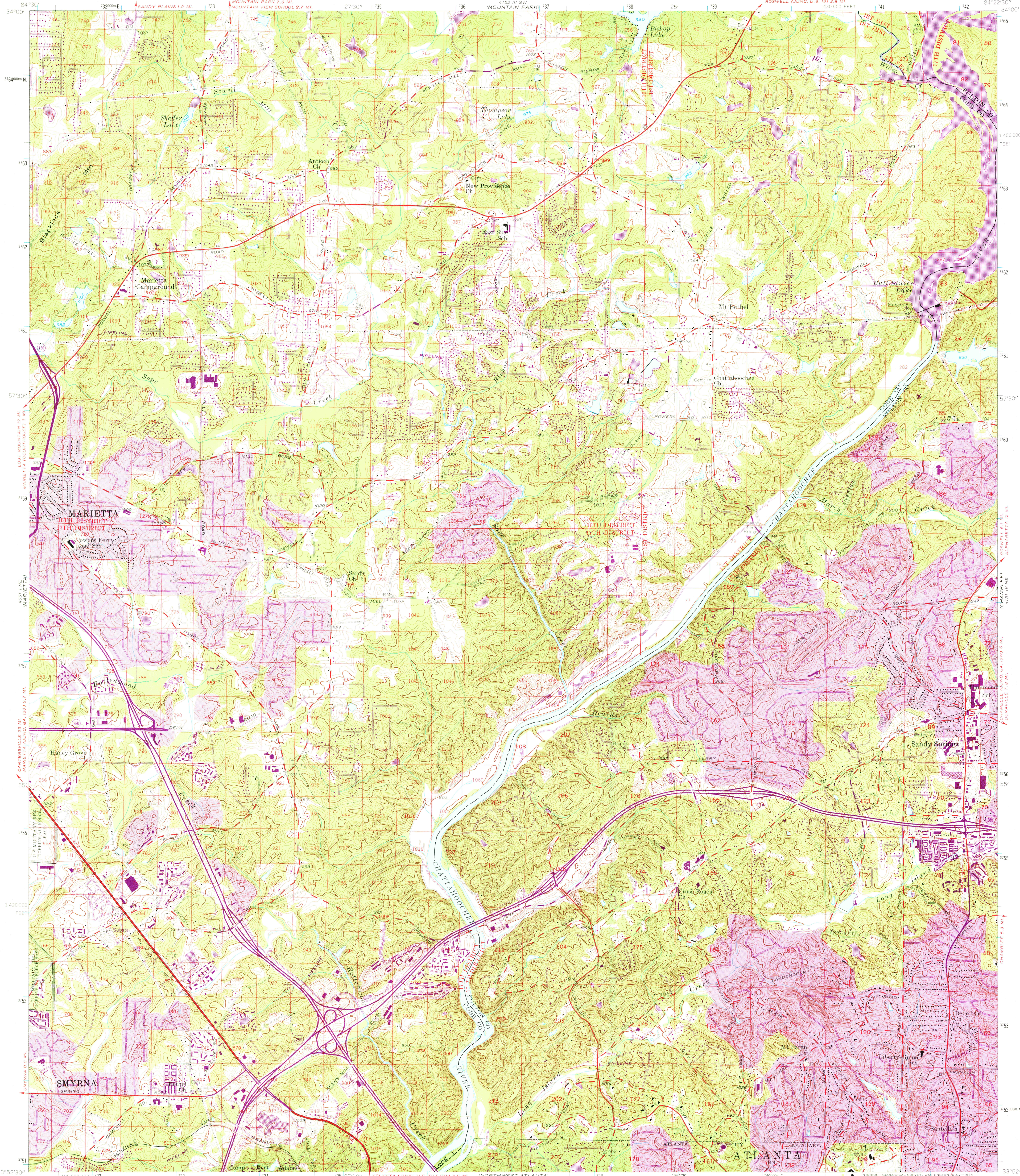


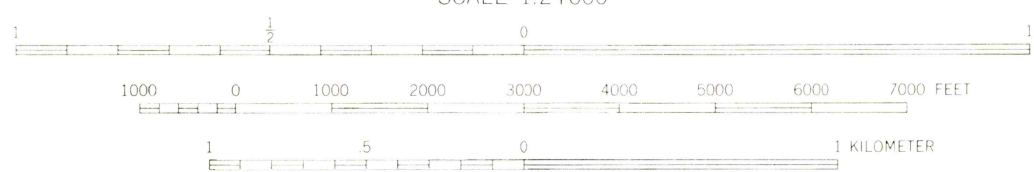
UNITED STATES
DEPARTMENT OF THE INTERIOR
GEOLOGICAL SURVEY

SANDY SPRINGS QUADRANGLE
GEORGIA
7.5 MINUTE SERIES (TOPOGRAPHIC)



Maped, edited, and published by the Geological Survey
Control by USGS, USC&GS, USCE, and Georgia Geodetic Survey
Topography from aerial photographs by Wild A 6
Aerial photographs taken 1952. Field check 1954-1955
Polyconic projection. 1927 North American datum
10,000-foot grid based on Georgia coordinate system,
west zone
1000-meter Universal Transverse Mercator grid ticks,
zone 16, shown in blue
Land lines from information supplied by
Atlanta-Fulton County Joint Planning Board and
Cobb County Roads and Revenues Commission
Revisions shown in purple compiled from aerial photographs
taken 1968 and 1973. This information not field checked
Purple tint indicates extension of urban areas

UTM GRID AND 1973 MAGNETIC NORTH
DECLINATION AT CENTER OF SHEET



CONTOUR INTERVAL 10 FEET
DATUM IS MEAN SEA LEVEL



ROAD CLASSIFICATION
Heavy-duty ——— Light-duty ———
Medium-duty ——— Unimproved dirt ———
Interstate Route U.S. Route State Route

USGS
Historical File
Topographic Division

SANDY SPRINGS, GA.
N 3352.5 - W 8422.5/7.5
1955
PHOTOREVISED 1968 AND 1973
AMS 4151 IV NW—SERIES V845

MAR 07 1994