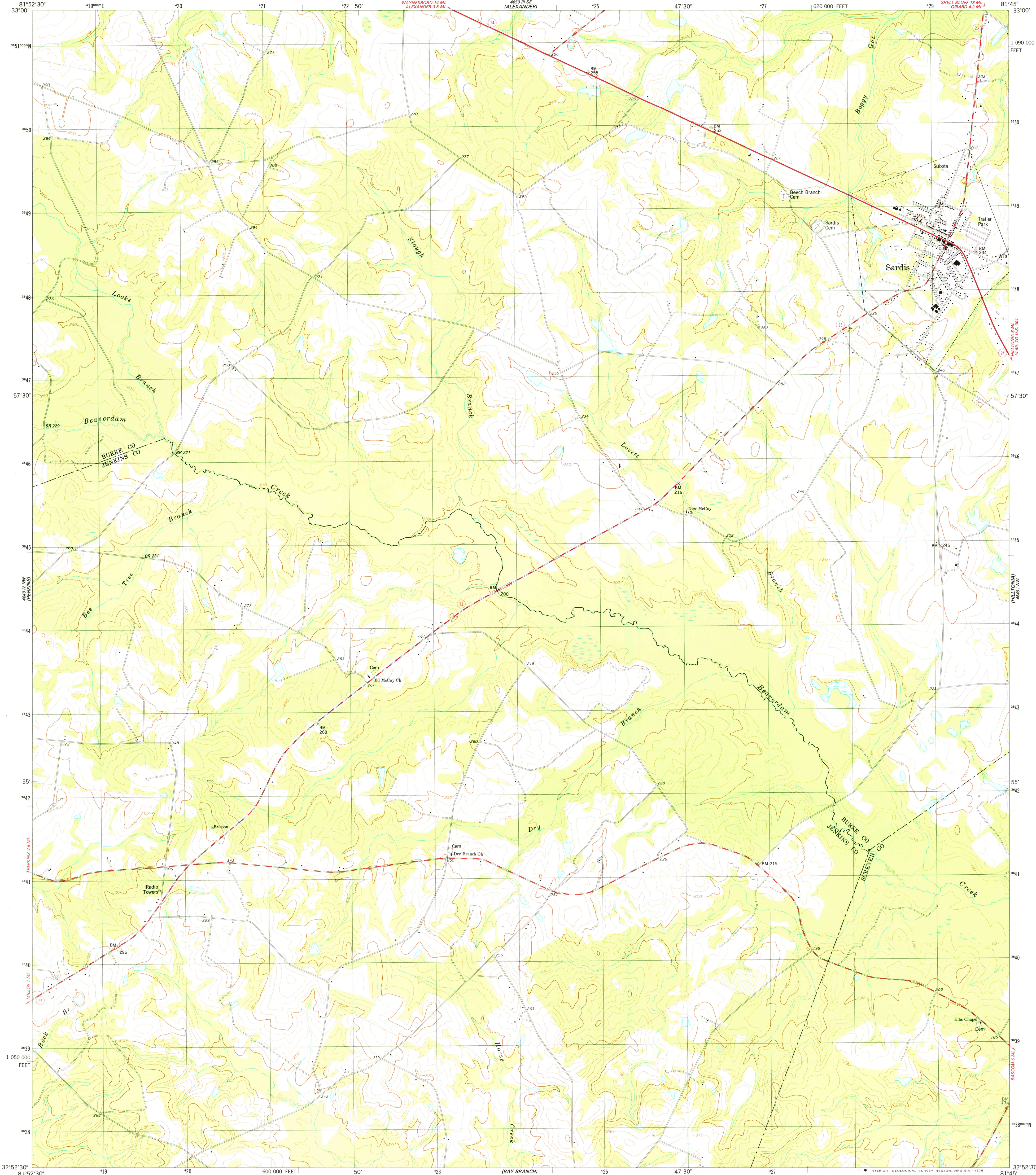


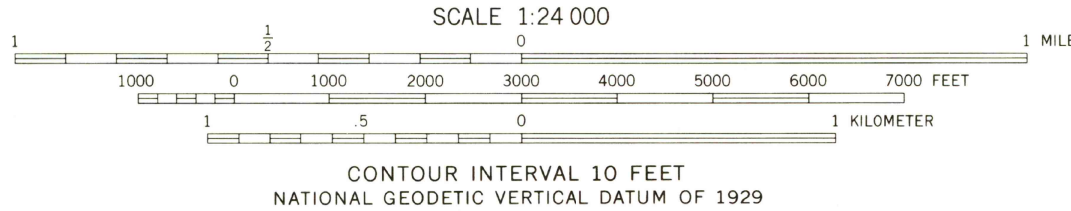
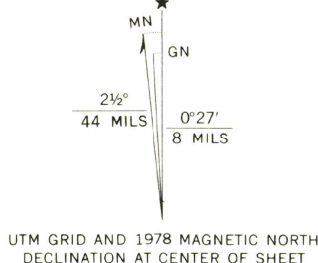
AMS 4649 IV NE (1:25,000)  
4649 IV NW (1:25,000)  
4649 IV SW (1:25,000)  
4649 IV SE (1:25,000)  
4649 V NW (1:25,000)  
4649 V NE (1:25,000)  
4649 V SE (1:25,000)  
4649 V SW (1:25,000)

UNITED STATES  
DEPARTMENT OF THE INTERIOR  
GEOLOGICAL SURVEY

SARDIS QUADRANGLE  
GEORGIA  
7.5 MINUTE SERIES (TOPOGRAPHIC)



Mapped, edited, and published by the Geological Survey  
Control by USGS and NOS/NOAA  
Topography by photogrammetric methods from aerial photographs  
taken 1972. Field checked 1974. Map edited 1978  
Projection and 10,000-foot grid ticks: Georgia coordinate system,  
east zone (transverse Mercator)  
1000-meter Transverse Mercator grid, zone 17  
1927 North American datum  
Fine red dashed lines indicate selected fence and field lines where  
generally visible on aerial photographs. This information is unchecked



ROAD CLASSIFICATION  
Primary highway, hard surface  
Secondary highway, hard surface  
Light duty road, hard or improved surface  
Unimproved road  
Interstate Route  
U. S. Route  
State Route  
AMS 4649 IV NE—SERIES V845

SEP 18 1978  
SARDIS, GA.  
NE/4 MILLEN 15' QUADRANGLE  
N3252.5—W8145/7.5  
1978

2906