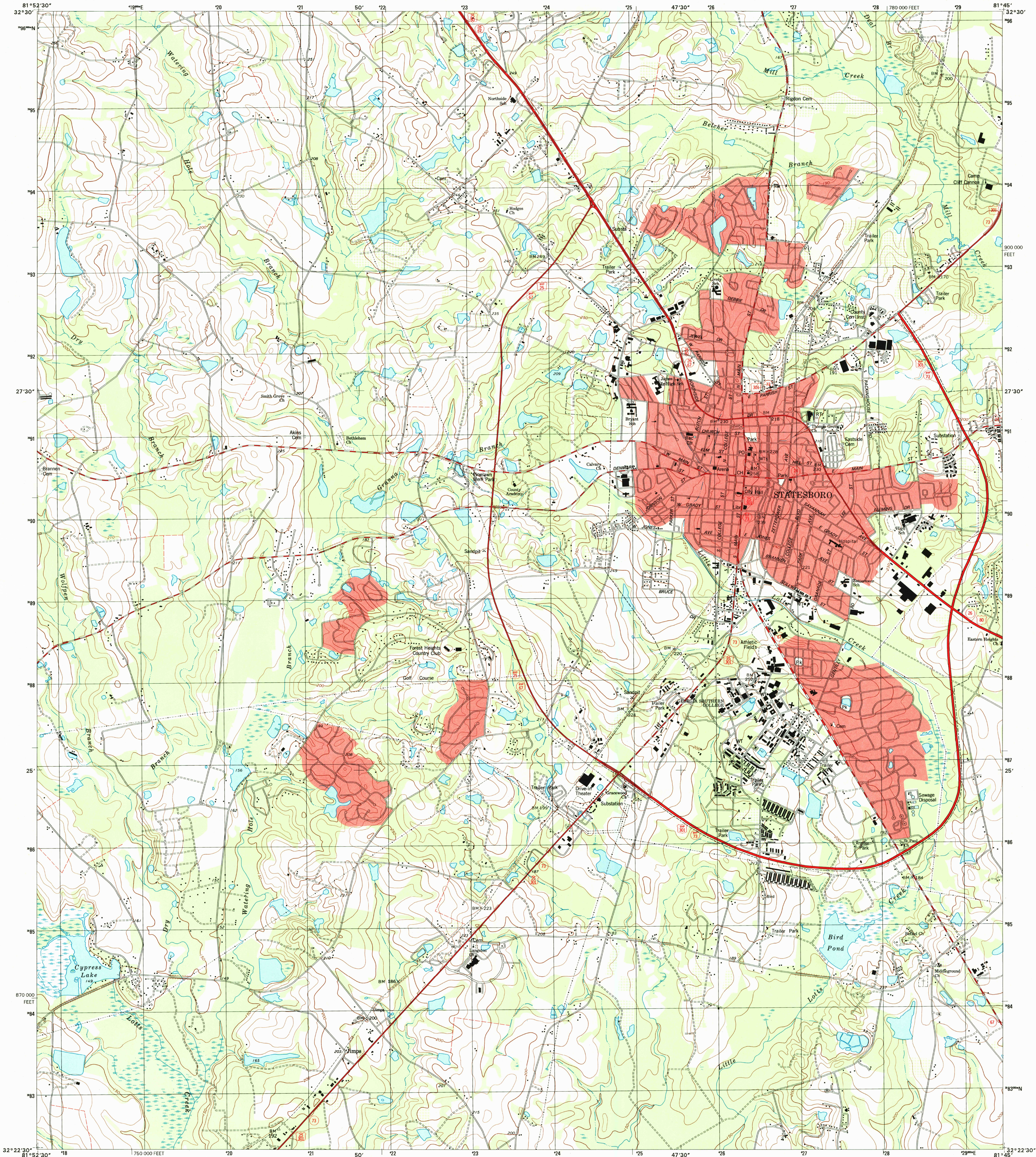


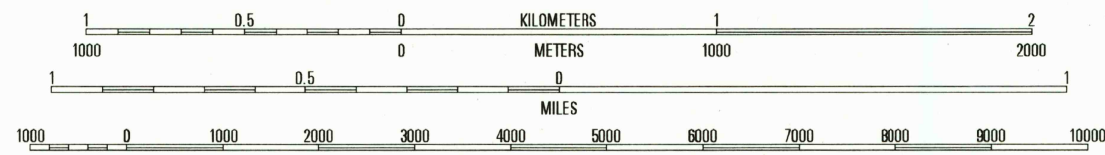
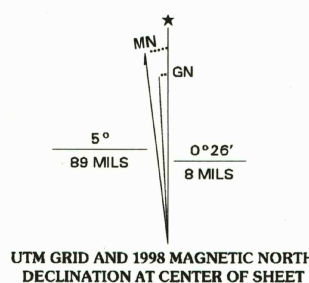


U.S. DEPARTMENT OF THE INTERIOR
U.S. GEOLOGICAL SURVEY

STATESBORO QUADRANGLE
GEORGIA-BULLOCH CO.
7.5-MINUTE SERIES (TOPOGRAPHIC)



Produced by the United States Geological Survey
Topography compiled 1972. Planimetry derived from imagery taken 1993. Survey control current as of 1975
North American Datum of 1983 (NAD 83). Projection and 1 000-meter grid: Universal Transverse Mercator, zone 17
10 000-foot ticks: Georgia Coordinate System of 1983 (east zone)
North American Datum of 1927 (NAD 27) is shown by dashed corner ticks. The values of the shift between NAD 83 and NAD 27 for 7.5-minute intersections are obtainable from National Geodetic Survey NADCON software



CONTOUR INTERVAL 10 FEET
NATIONAL GEODETIC VERTICAL DATUM OF 1929
TO CONVERT FROM FEET TO METERS, MULTIPLY BY 0.3048

THIS MAP COMPLIES WITH NATIONAL MAP ACCURACY STANDARDS
FOR SALE BY U.S. GEOLOGICAL SURVEY, P.O. BOX 25286, DENVER, COLORADO 80225
A FOLDER DESCRIBING TOPOGRAPHIC MAPS AND SYMBOLS IS AVAILABLE ON REQUEST



1	2	3	4	5	6	7	8
1 Portal	2 Hopewell	3 Dover	4 Palisades	5 Brooklet	6 Register	7 Nevada	8 Denmark

RECEIVED

DEC 31 1998

USGS NHD
HISTORICAL MAP ARCHIVES

STATESBORO, GA
1993

NIMA 4648 IV NE-SERIES V845

