

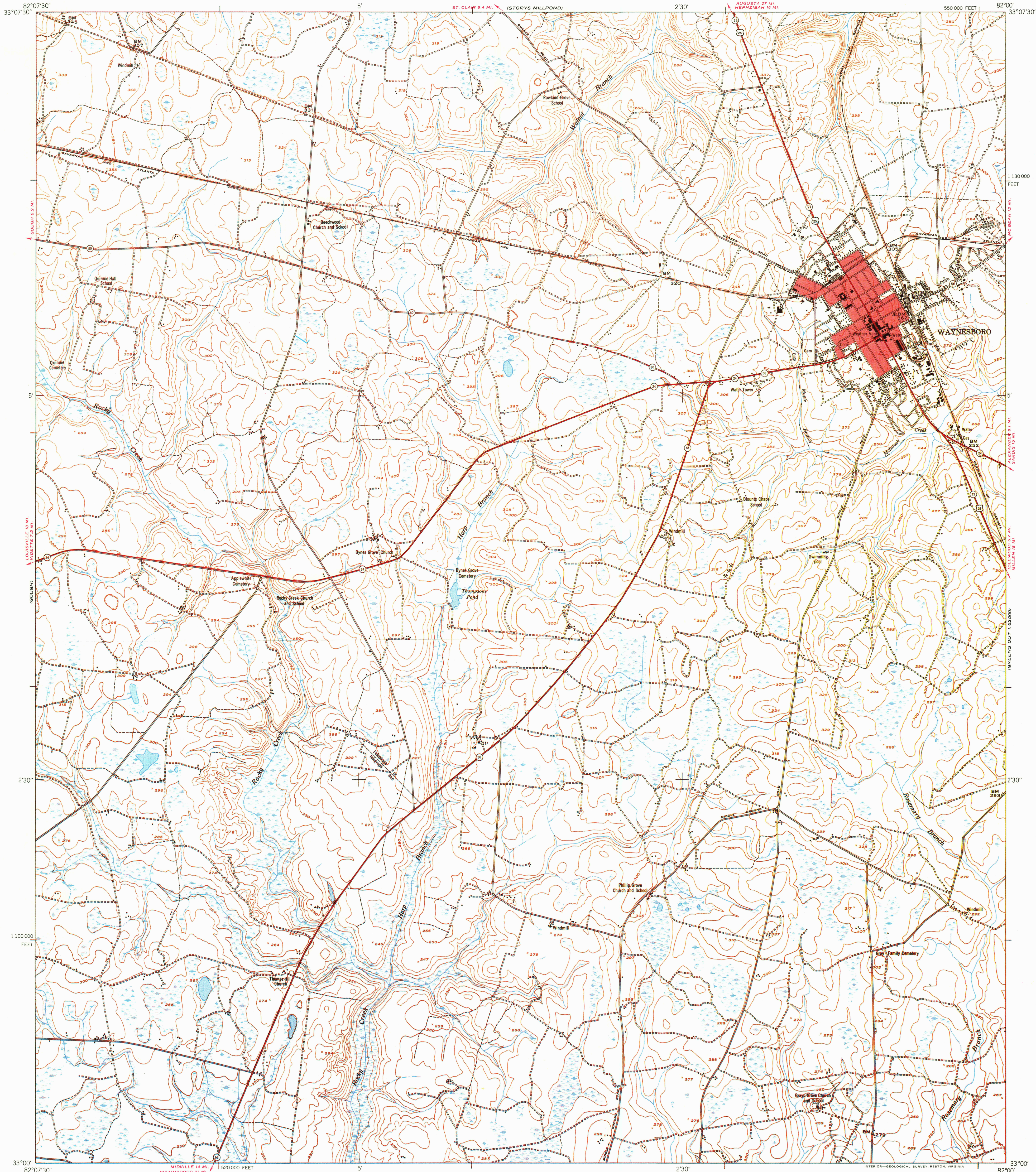
KEYSVILLE

UNITED STATES
DEPARTMENT OF THE INTERIOR
GEOLOGICAL SURVEY

UNITED STATES
DEPARTMENT OF THE ARMY
CORPS OF ENGINEERS

WAYNESBORO QUADRANGLE
GEORGIA-BURKE CO.
7.5 MINUTE SERIES (TOPOGRAPHIC)
SE/4 GOUGH 15' QUADRANGLE

GREENS OUT
1:62,500



Mapped by the Army Map Service
Edited and published by the Geological Survey
Control by USC&GS, USED, USGS, AMS, and
Georgia Geodetic Survey

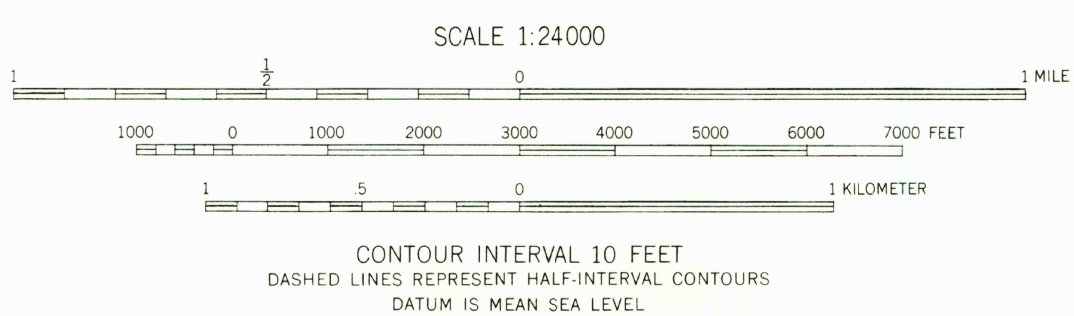
Topography from aerial photographs by multiplex methods
Aerial photographs taken 1947. Field check 1948
Polyconic projection. 1927 North American datum
10,000-foot grid based on Georgia coordinate system,
east zone

No distinction is made between dwellings, barns,
commercial and industrial buildings

Red tint indicates area in which only
landmark buildings are shown

Unchecked elevations are shown in brown

TRUE NORTH
MAGNETIC NORTH
APPROXIMATE MEAN
DECLINATION, 1948



THIS MAP COMPLIES WITH NATIONAL MAP ACCURACY STANDARDS
FOR SALE BY U. S. GEOLOGICAL SURVEY, WASHINGTON 25, D. C.
A FOLDER DESCRIBING TOPOGRAPHIC MAPS AND SYMBOLS IS AVAILABLE ON REQUEST

ROAD CLASSIFICATION

Heavy-duty	Medium-duty	Loose-surface, graded, or narrow hard-surface	U. S. Route	State Route
ALL WEATHER ROADS	ALL WEATHER ROADS	ALL WEATHER ROADS		
Improved dirt	Improved dirt	Improved dirt		
Unimproved dirt	Unimproved dirt	Unimproved dirt		

USGS
Historical File
Topographic Division

WAYNESBORO, GA.
SE/4 GOUGH 15' QUADRANGLE
N3300-W8200/7.5

APR 28 1978

EDITION OF 1950

This map was reproduced by electronic color scanning of an earlier printing (1950).