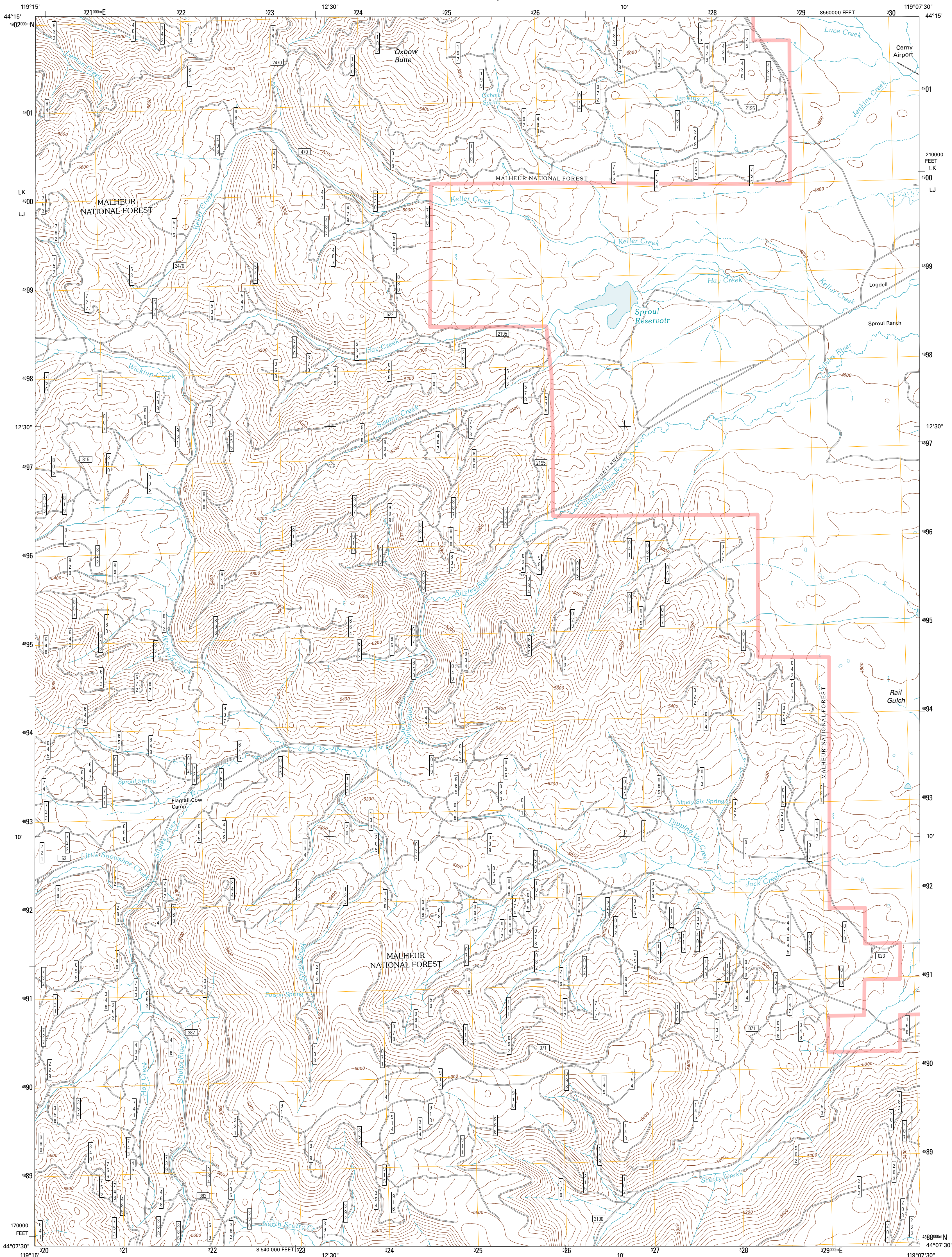




U.S. DEPARTMENT OF THE INTERIOR
U. S. GEOLOGICAL SURVEY

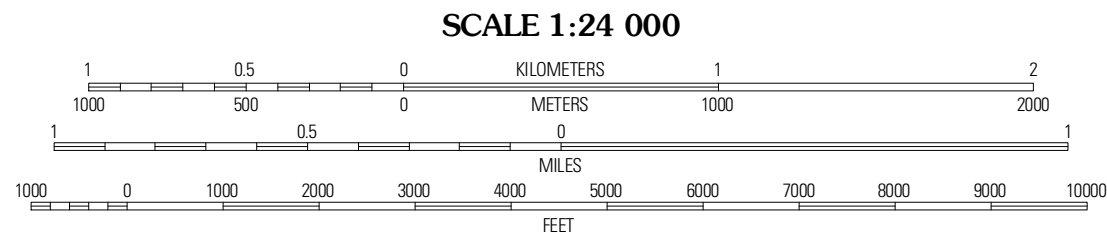
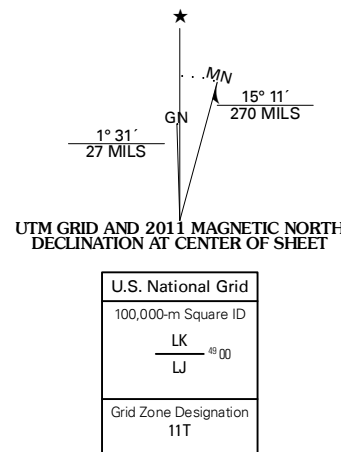


LOGDELL QUADRANGLE
OREGON-GRANT CO.
7.5-MINUTE SERIES

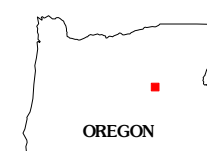


Produced by the United States Geological Survey
North American Datum of 1983 (NAD83)
World Geodetic System of 1984 (WGS84). Projection and
1 000 meter grid. Universal Transverse Mercator, Zone 11T
10 000-foot ticks. Oregon Coordinate System of 1983 (north
zone)

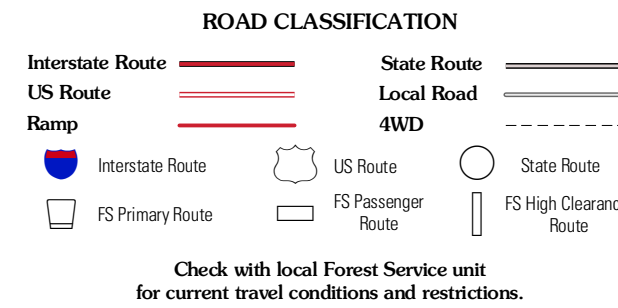
Imagery.....NAIP, July 2009
Roads.....62006-2010 Tele Atlas
Roads within US Forest Service Lands.....FS Topo Data
with limited Forest Service updates, 2009
Names.....GNS, 2010
Hydrography.....National Hydrography Dataset, 2009
Contours.....National Elevation Dataset, 1999
Boundaries.....Census, IBWC, BIC, USGS, 1972 - 2010



CONTOUR INTERVAL 40 FEET
NORTH AMERICAN VERTICAL DATUM OF 1988
This map was produced to conform with version 0.5.10
of the USGS US Topo Product Standard.
A metadata file associated with this product is draft version 0.5.16



Big Wood Springs	McClain Mountain	Fall Mountain
Flagstaff Mountain	Logdell	Scotty Creek
Lewis Creek	Five Hundred Flat	Rail Creek Bare



LOGDELL, OR
2011