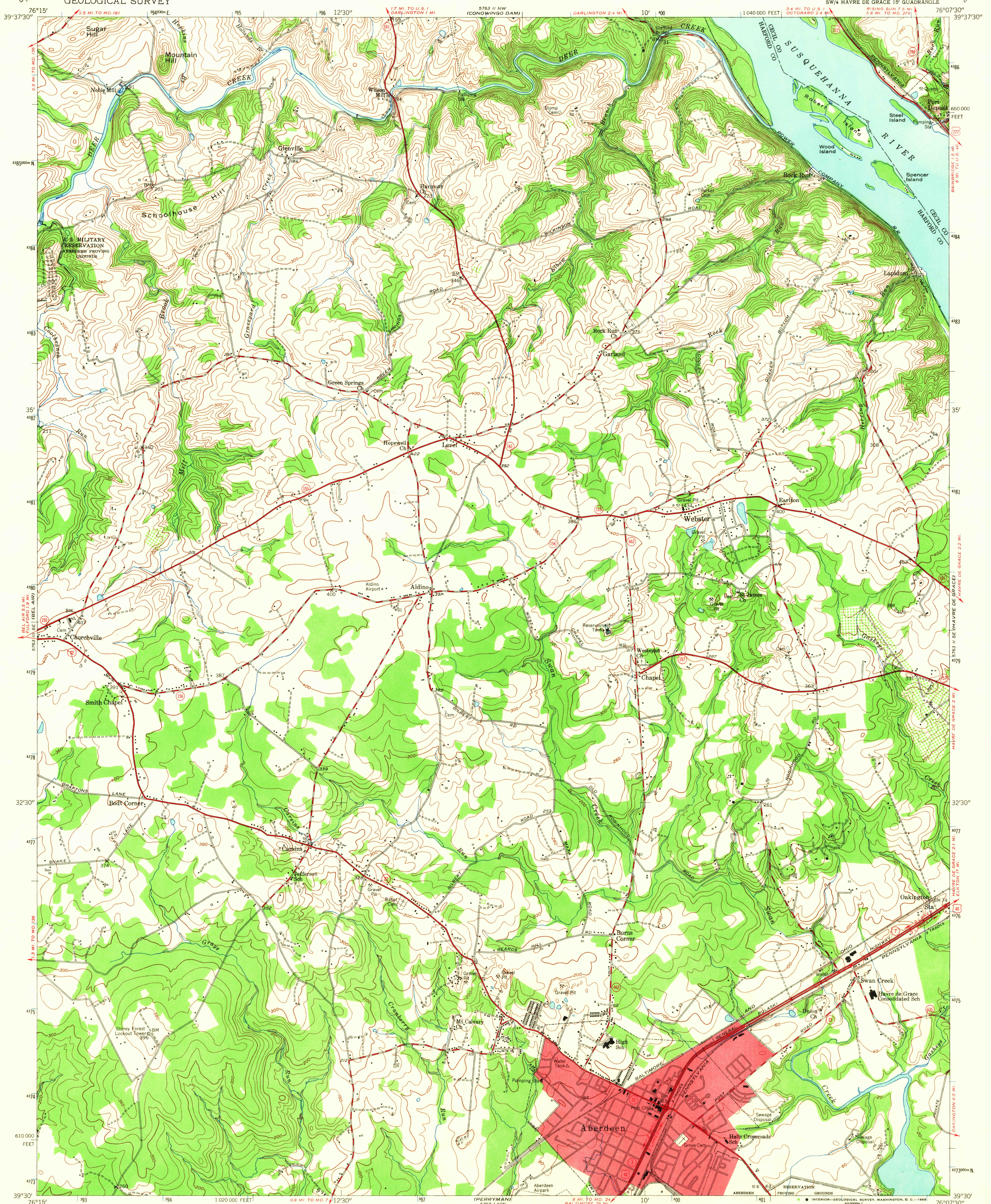


UNITED STATES
DEPARTMENT OF THE INTERIOR
GEOLOGICAL SURVEY

ABERDEEN QUADRANGLE
MARYLAND
7.5 MINUTE SERIES (TOPOGRAPHIC)
SW/4 HAYVE DE GRACE 15' QUADRANGLE



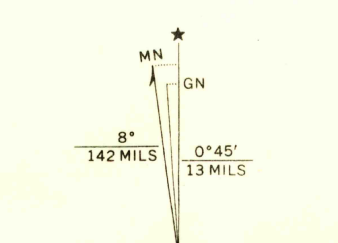
Mapped, edited, and published by the Geological Survey
Control by USGS and USC&GS

Culture and drainage in part compiled from aerial photographs
taken 1952. Topography enlarged from 1:62,500 scale map of
Hayve de Grace quadrangle, 15 minute series. Original map by
plane-table surveys 1939-1940. Revised 1953

Polyconic projection. 1927 North American datum
10,000-foot grid based on Maryland coordinate system

Red tint indicates area in which only
landmark buildings are shown

1000-meter Universal Transverse Mercator grid ticks,
zone 18, shown in blue



CONTOUR INTERVAL 20 FEET
DATUM IS MEAN SEA LEVEL

THIS MAP COMPLIES WITH NATIONAL MAP ACCURACY STANDARDS
FOR SALE BY U. S. GEOLOGICAL SURVEY, WASHINGTON, D. C. 20242
A FOLDER DESCRIBING TOPOGRAPHIC MAPS AND SYMBOLS IS AVAILABLE ON REQUEST

USGS
Historical File
Topographic Division

U.S.G.S.
FILE COPY
TOPOGRAPHIC DIVISION

ROAD CLASSIFICATION
Heavy-duty 4 LANE 16 LANE Light-duty
Medium-duty 4 LANE 16 LANE Unimproved dirt
U.S. Route State Route

ABERDEEN, MD.
SW/4 HAYVE DE GRACE 15' QUADRANGLE
N3930-W7607.5/7.5

1953

AMS 5763 II SW-SERIES V833

2675
OCT 28 1968