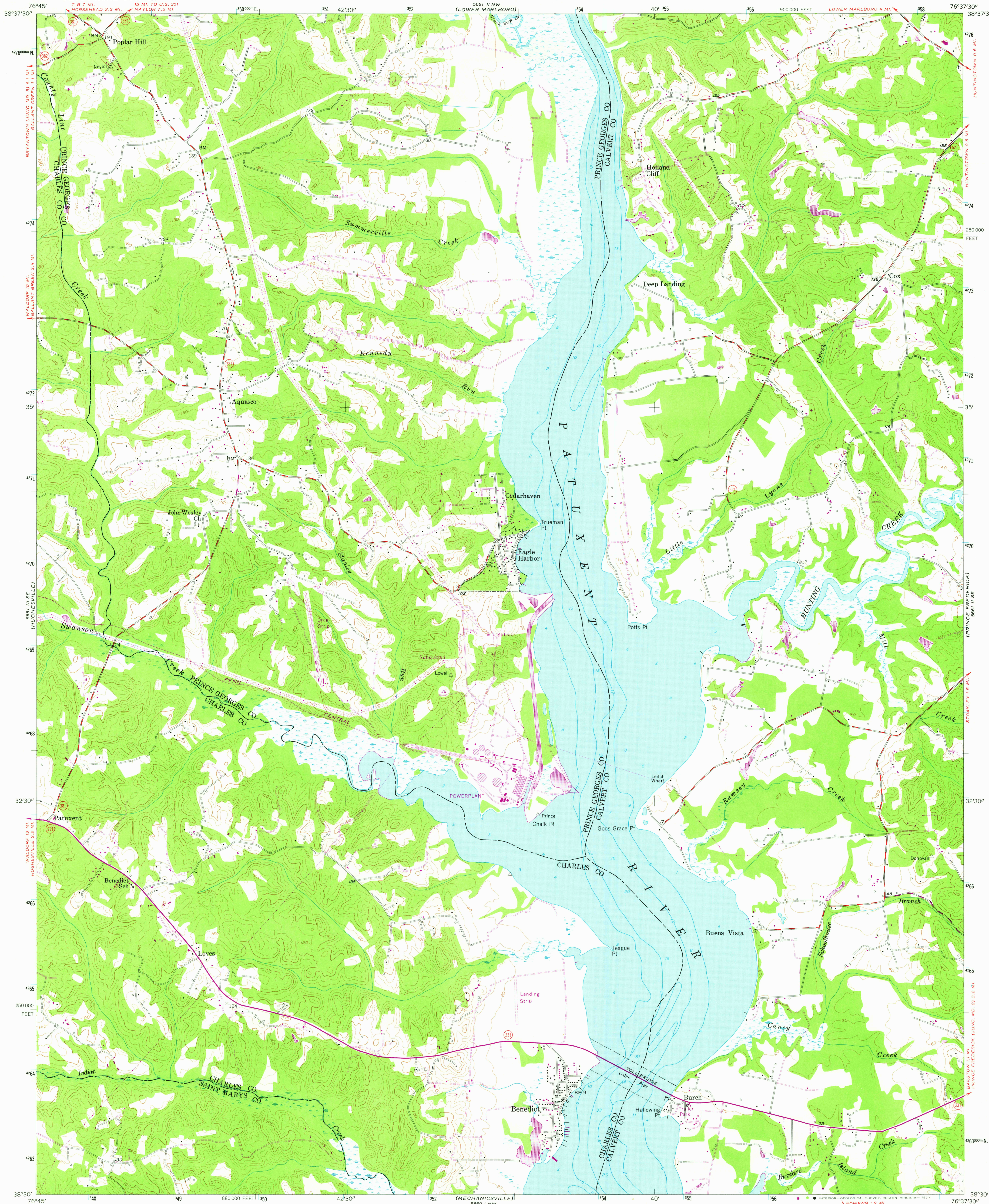


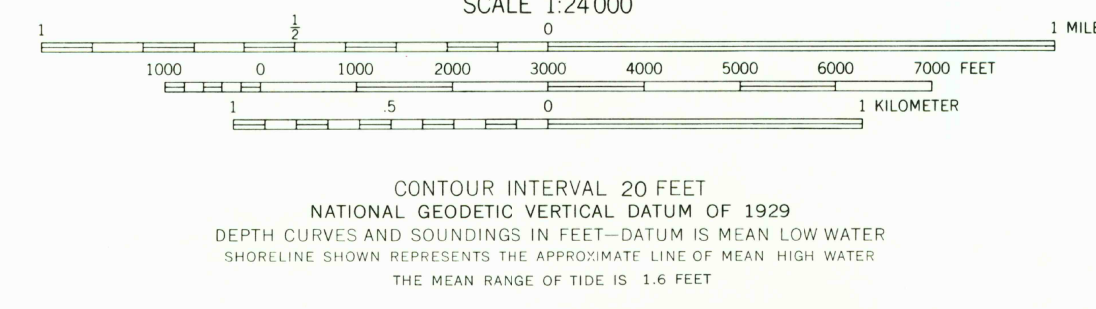
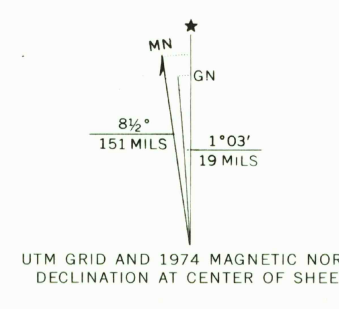
UNITED STATES
DEPARTMENT OF THE INTERIOR
GEOLOGICAL SURVEY

BENEDICT QUADRANGLE
MARYLAND
7.5 MINUTE SERIES (TOPOGRAPHIC)



Mapped, edited, and published by the Geological Survey

Control by USGS and USC&GS
Culture and drainage in part compiled from aerial photographs taken 1953. Topography enlarged from 1:62,500 scale map of Prince Frederick quadrangle, 15 minute series. Original map by planetable surveys 1934-1935. Revised 1953
Hydrography from USC&GS chart 539 dated 1951
Polyconic projection. 1927 North American datum
10,000-foot grid based on Maryland coordinate system
1000-meter Universal Transverse Mercator grid ticks, zone 18, shown in blue
Revisions shown in purple compiled from aerial photographs taken 1974. This information not field checked



ROAD CLASSIFICATION			
Heavy-duty	Light-duty	Unimproved dirt	
Medium-duty			
U. S. Route	State Route		

USGS
Historical File
Topographic Division

BENEDICT, MD.
N 3830—W 7637.5/7.5

1953
PHOTOREVISED 1974
AMS 5661 II SW—SERIES V833

THIS MAP COMPLIES WITH NATIONAL MAP ACCURACY STANDARDS
FOR SALE BY U. S. GEOLOGICAL SURVEY, RESTON, VIRGINIA 22092
A FOLDER DESCRIBING TOPOGRAPHIC MAPS AND SYMBOLS IS AVAILABLE ON REQUEST

MAY 23 1977
3150