

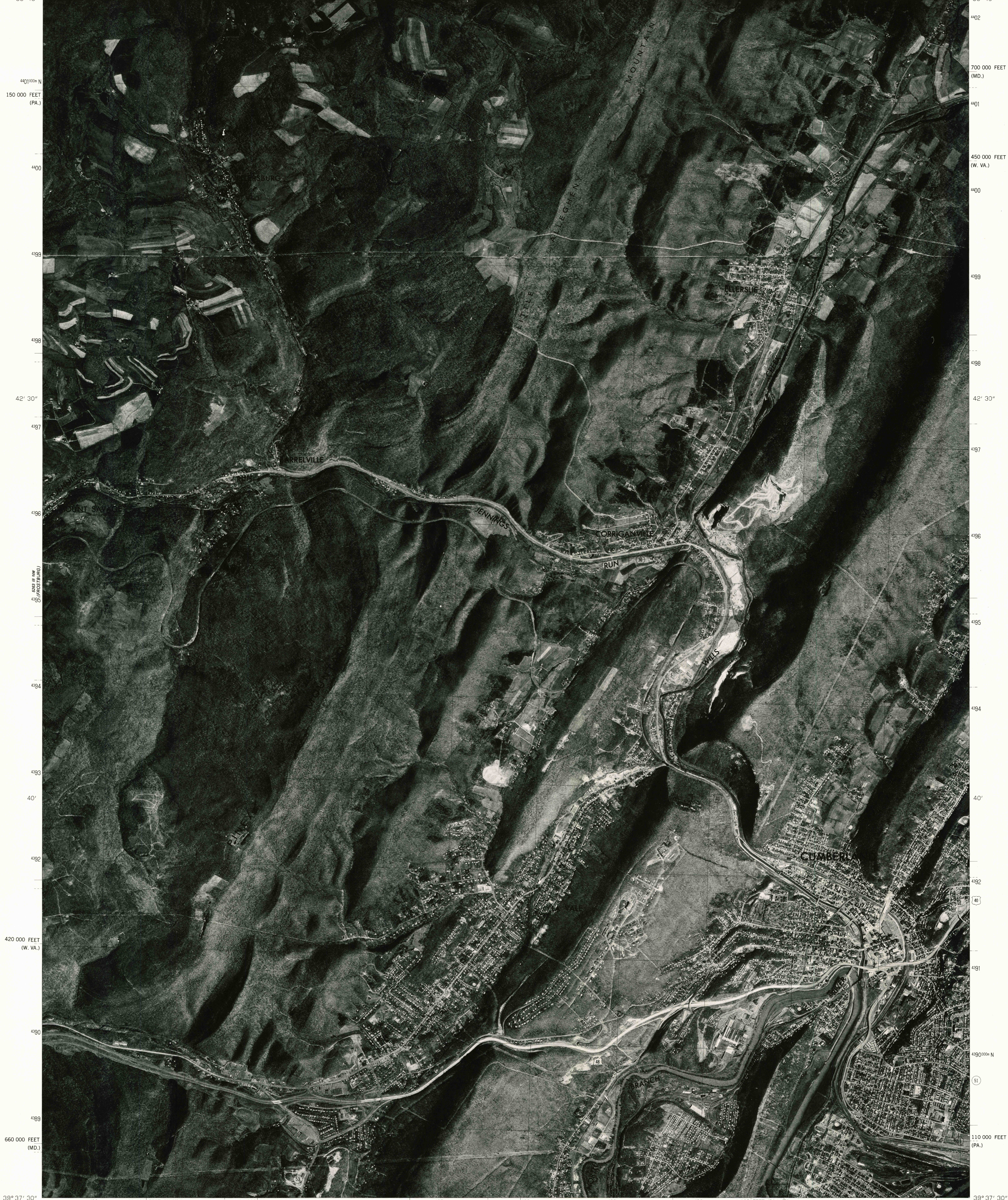
5263 III NE
(W. VA. 7.5)

UNITED STATES
DEPARTMENT OF THE INTERIOR
GEOLOGICAL SURVEY



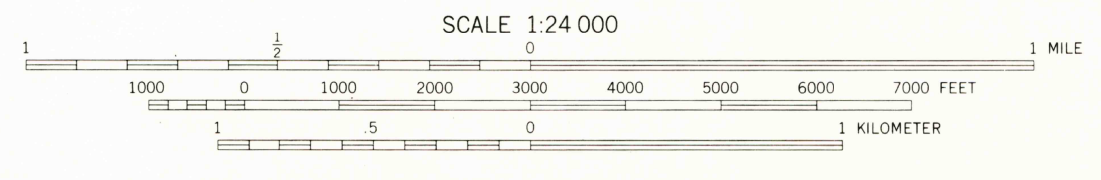
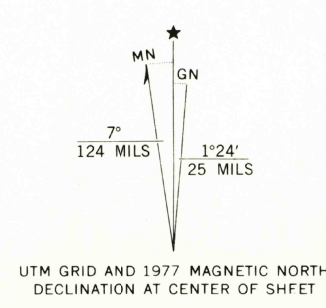
CUMBERLAND QUADRANGLE
MARYLAND-PENNSYLVANIA-WEST VIRGINIA
7.5 MINUTE SERIES ORTHOPHOTOQUAD

78° 52' 30" 163 000 FEET (PA.) 169 000 FEET (PA.) 185 50' 186 5263 IV SE (FAIRHOPE) 188 189 47' 30" 190 300 000 FEET (MD.) 2 210 000 FEET (W. VA.) 78° 45' 39° 45'



39° 37' 30" 78° 52' 30" 183 2 180 000 FEET (W. VA.) 280 000 FEET (MD.) 50' 187 188 189 47' 30" 190 1 710 000 FEET (PA.) 191 78° 45' 39° 37' 30" 192 000 E

Produced and published by the Geological Survey
in cooperation with the Soil Conservation Service
Orthophotograph prepared from 1:80,000-scale
aerial photograph taken April 15, 1977
Projection: Maryland coordinate system
(Lambert conformal conic)
10,000-foot grid ticks based on Maryland coordinate
system, Pennsylvania coordinate system, south zone,
and West Virginia coordinate system, north zone
1000-meter Universal Transverse Mercator grid,
zone 17. 1927 North American datum
Photoimagery rectified by automatic correlation



PRINCIPAL NUMBERED HIGHWAYS
Interstate Route U. S. Route State Route



CUMBERLAND, MD.-PA.-W. VA.
N3937.5-W7845/7.5
1977
DMA 5263 III NE-SERIES V033

THIS MAP COMPLIES WITH NATIONAL MAP ACCURACY STANDARDS
FOR SALE BY U. S. GEOLOGICAL SURVEY, RESTON, VIRGINIA 22092

This quadrangle area also covered by
1:24,000-scale topographic map

OCT 2 2 1979

900