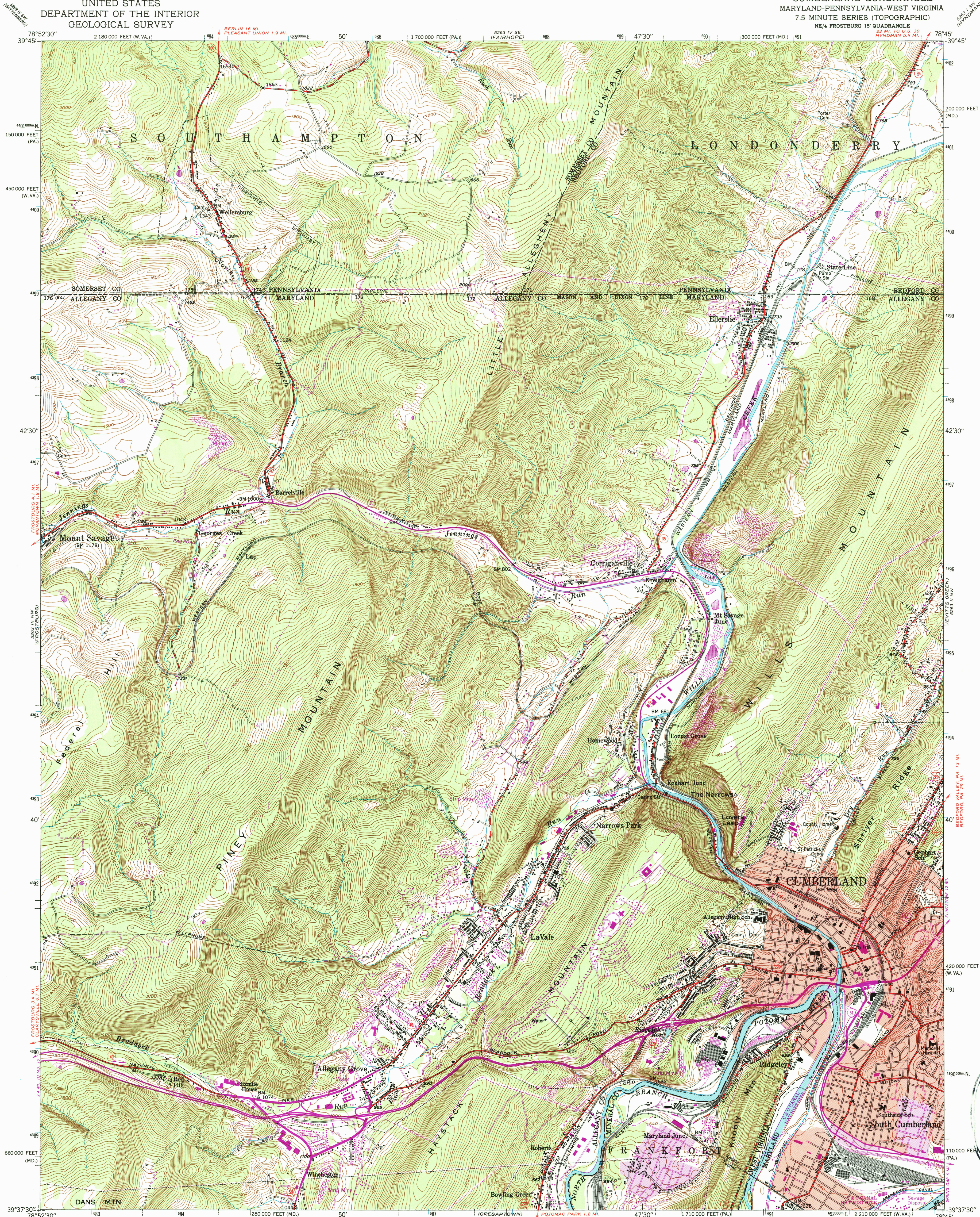


UNITED STATES
DEPARTMENT OF THE INTERIOR
GEOLOGICAL SURVEY

CUMBERLAND QUADRANGLE
MARYLAND-PENNSYLVANIA-WEST VIRGINIA
7.5 MINUTE SERIES (TOPOGRAPHIC)
NE/4 FROSTBURG 15' QUADRANGLE

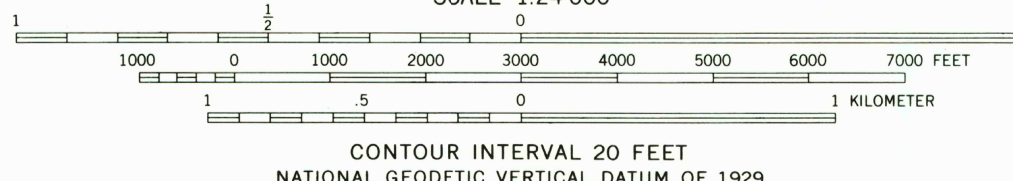
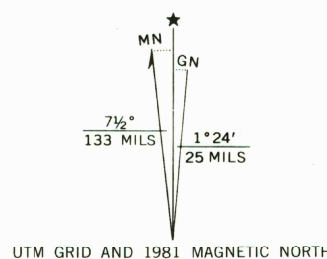


Mapped, edited, and published by the Geological Survey

Control by USGS and NOS/NOAA
Topography by photogrammetric methods from aerial
photographs taken 1947. Field checked 1949

Polyconic projection. 10,000-foot grid ticks based on
Maryland coordinate system,
Pennsylvania coordinate system, south zone, and
West Virginia coordinate system, north zone
1000-meter Universal Transverse Mercator grid ticks,
zone 17, shown in blue. 1927 North American Datum
To place on the predicted North American Datum 1983
move the projection lines 6 meters south and
22 meters west as shown by dashed corner ticks

Red tint indicates area in which only landmark buildings are shown
There may be private inholdings within the boundaries of
the National or State reservations shown on this map



THIS MAP COMPLIES WITH NATIONAL MAP ACCURACY STANDARDS.
FOR SALE BY U.S. GEOLOGICAL SURVEY, DENVER, COLORADO 80225
OR RESTON, VIRGINIA 22092
A FOLDER DESCRIBING TOPOGRAPHIC MAPS AND SYMBOLS IS AVAILABLE ON REQUEST



ROAD CLASSIFICATION
Heavy-duty ——— Light-duty ———
Medium-duty ——— Unimproved dirt ———
U.S. Route ——— State Route ———

CUMBERLAND, MD-PA-W.VA.
NE/4 FROSTBURG 15' QUADRANGLE
39078-F7-TF-024
1949
PHOTOREVISED 1981
DMA 5263 III NE-SERIES V833

Revisions shown in purple compiled in cooperation with
Commonwealth of Pennsylvania agencies from aerial
photographs taken 1977 and other sources. This
information not field checked. Map edited 1981
Purple tint indicates extension of urban areas

USGS AND HISTORICAL MAP
MAP 02 1987
REC'D FILE COPY