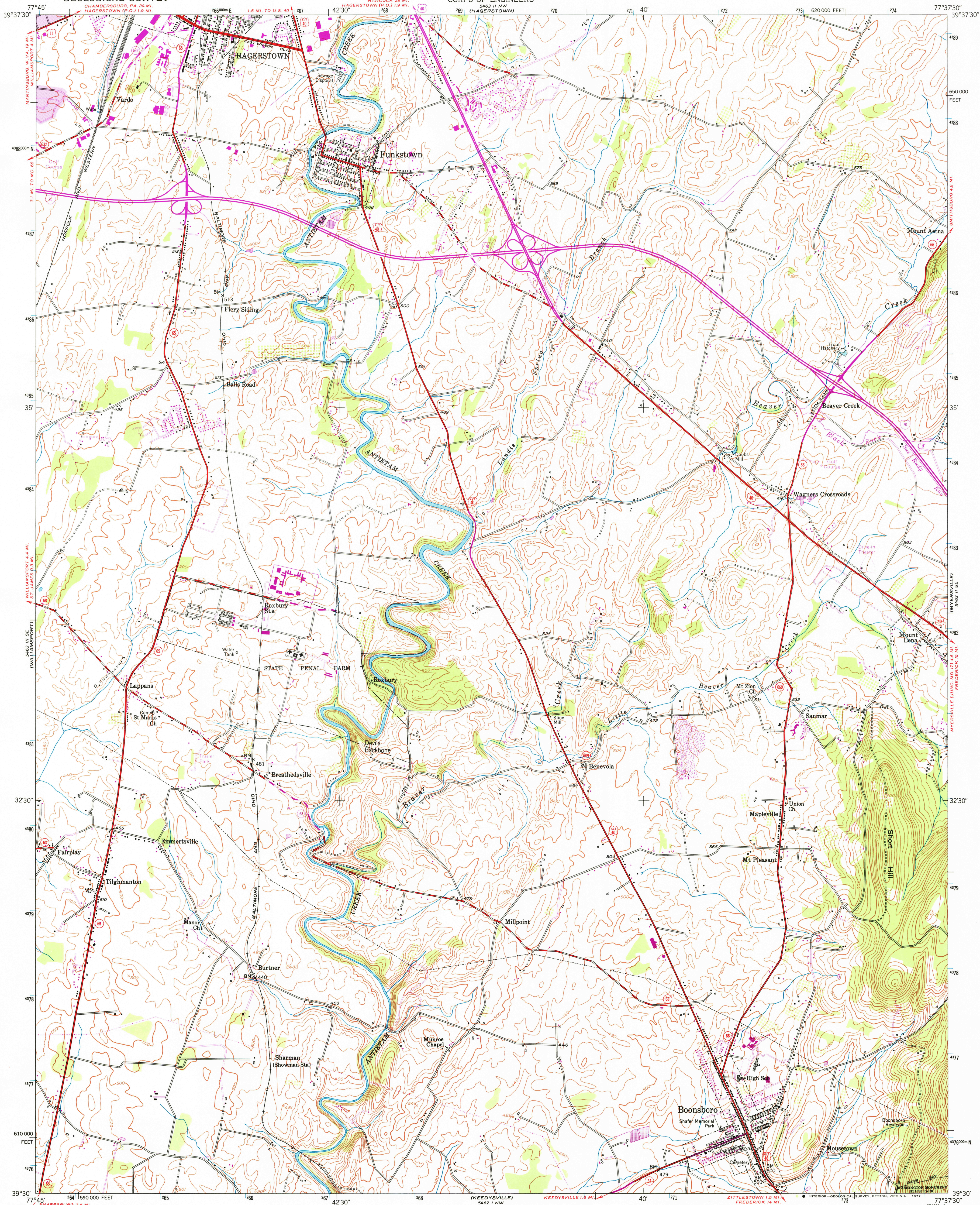


UNITED STATES
DEPARTMENT OF THE INTERIOR
GEOLOGICAL SURVEY

UNITED STATES
DEPARTMENT OF THE ARMY
CORPS OF ENGINEERS

FUNKSTOWN QUADRANGLE
MARYLAND—WASHINGTON CO.
7.5 MINUTE SERIES (TOPOGRAPHIC)



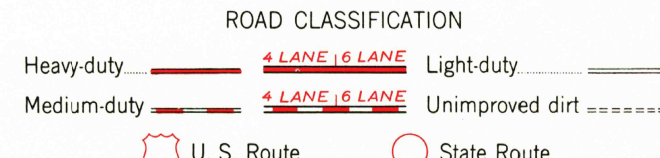
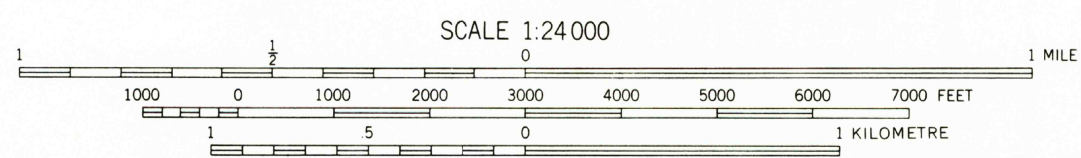
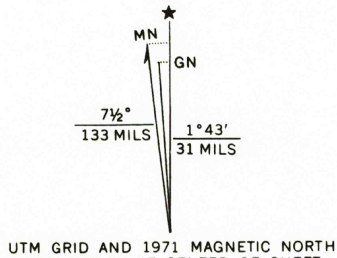
Map by the Corps of Engineers, U. S. Army
Edited and published by the Geological Survey

Control by USGS, USC&GS, and USFS

Topography from aerial photographs by stereophotogrammetric
methods. Aerial photographs taken 1943
Culture revised by the Geological Survey 1953

Polyconic projection. 1927 North American datum
10,000-foot grids based on Maryland coordinate system
1000-metre Universal Transverse Mercator grid ticks,
zone 18, shown in blue

Revisions shown in purple compiled by the Geological Survey from
aerial photographs taken 1971. This information not field checked
Purple tint indicates extension urban areas



FUNKSTOWN, MD.

N9390-W7737.5/7.5

USGS
Historical File
Topographic Division

1953
PHOTOREVISED 1971
AMS 5463 II SW-SERIES V833

THIS MAP COMPLIES WITH NATIONAL MAP ACCURACY STANDARDS
FOR SALE BY U. S. GEOLOGICAL SURVEY, RESTON, VIRGINIA 22092
A FOLDER DESCRIBING TOPOGRAPHIC MAPS AND SYMBOLS IS AVAILABLE ON REQUEST

FEB 23 1977
5650