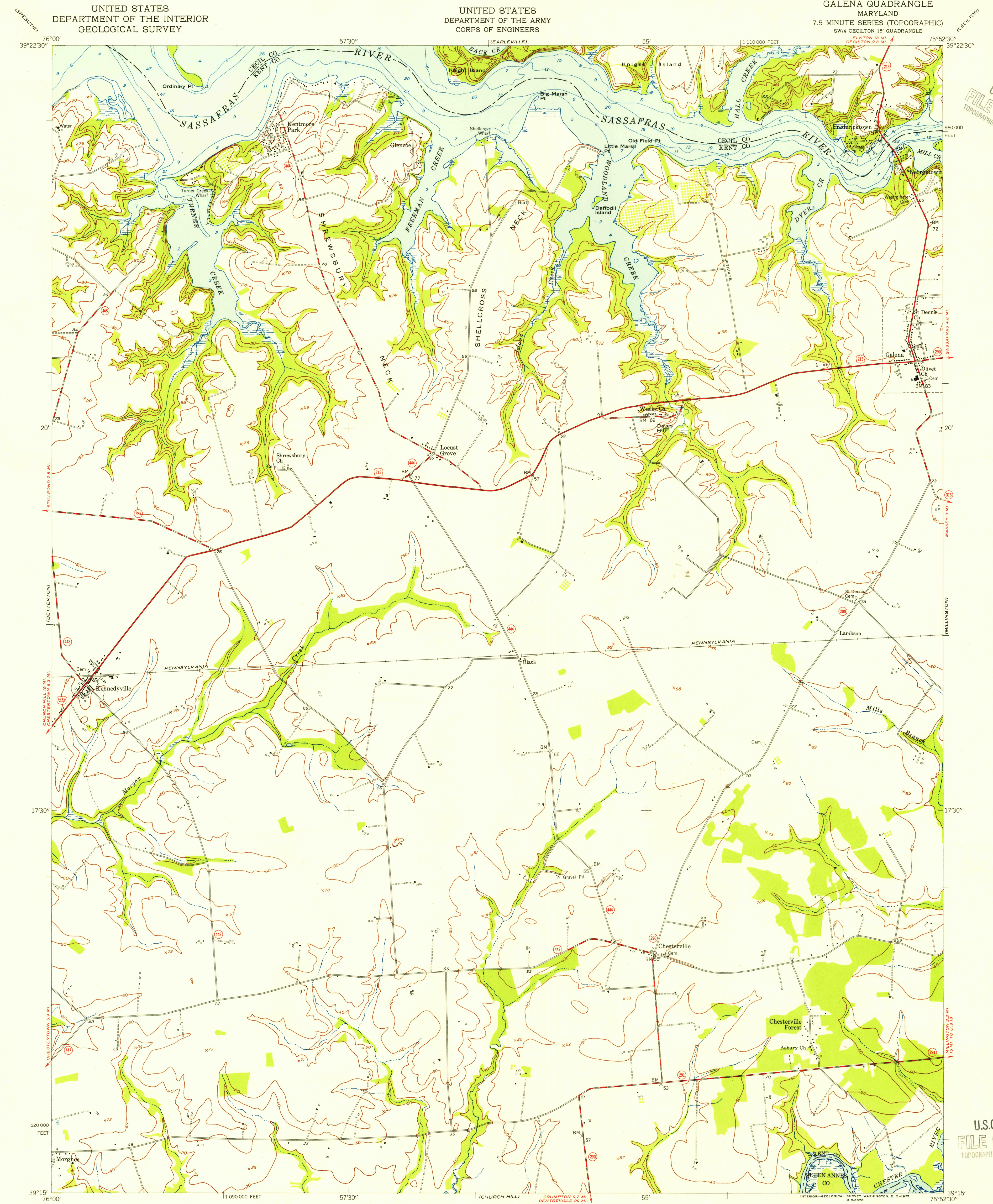


U.S.G.S.
FILE COPY
TOPOGRAPHIC DIVISION

U.S.G.S.
FILE COPY
TOPOGRAPHIC DIVISION

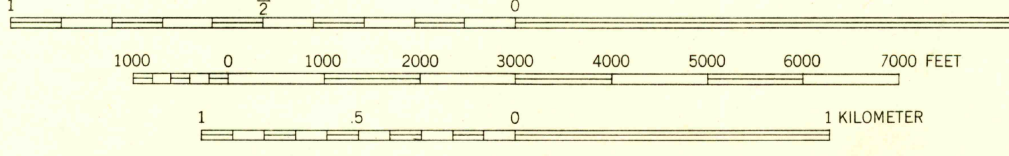


Map by the Army Map Service
Edited and published by the Geological Survey
Control by USGS and USC&GS

Culture and drainage in part compiled from aerial photographs
taken 1937 and 1942. Topography by plane-table surveys
Culture revised by the Geological Survey 1953
Hydrography from USC&GS chart 572 dated 1941
Polyconic projection. 1927 North American datum
10,000-foot grid based on Maryland coordinate system

TRUE NORTH
MAGNETIC NORTH
APPROXIMATE MEAN
DECLINATION, 1953

SCALE 1:24,000



CONTOUR INTERVAL 20 FEET
DATUM IS MEAN SEA LEVEL
DEPTH CURVES AND SOUNDINGS IN FEET—DATUM IS MEAN LOW WATER
SHORELINE SHOWN REPRESENTS THE APPROXIMATE LINE OF MEAN HIGH WATER
THE MEAN RANGE OF TIDE IS 2 FEET

THIS MAP COMPLIES WITH NATIONAL MAP ACCURACY STANDARDS
FOR SALE BY U. S. GEOLOGICAL SURVEY, WASHINGTON 25, D. C.
A FOLDER DESCRIBING TOPOGRAPHIC MAPS AND SYMBOLS IS AVAILABLE ON REQUEST

USGS
Historical File
Topographic Division

MARYLAND
QUADRANGLE LOCATION

ROAD CLASSIFICATION
Heavy-duty 4 LANE 6 LANE Light-duty
Medium-duty 4 LANE 6 LANE Unimproved dirt
U. S. Route State Route

GALENA, MD.
SW/4 CECILTON 15' QUADRANGLE
N3915-W7552.5/7.5

1953

MAR 4 1955

2655