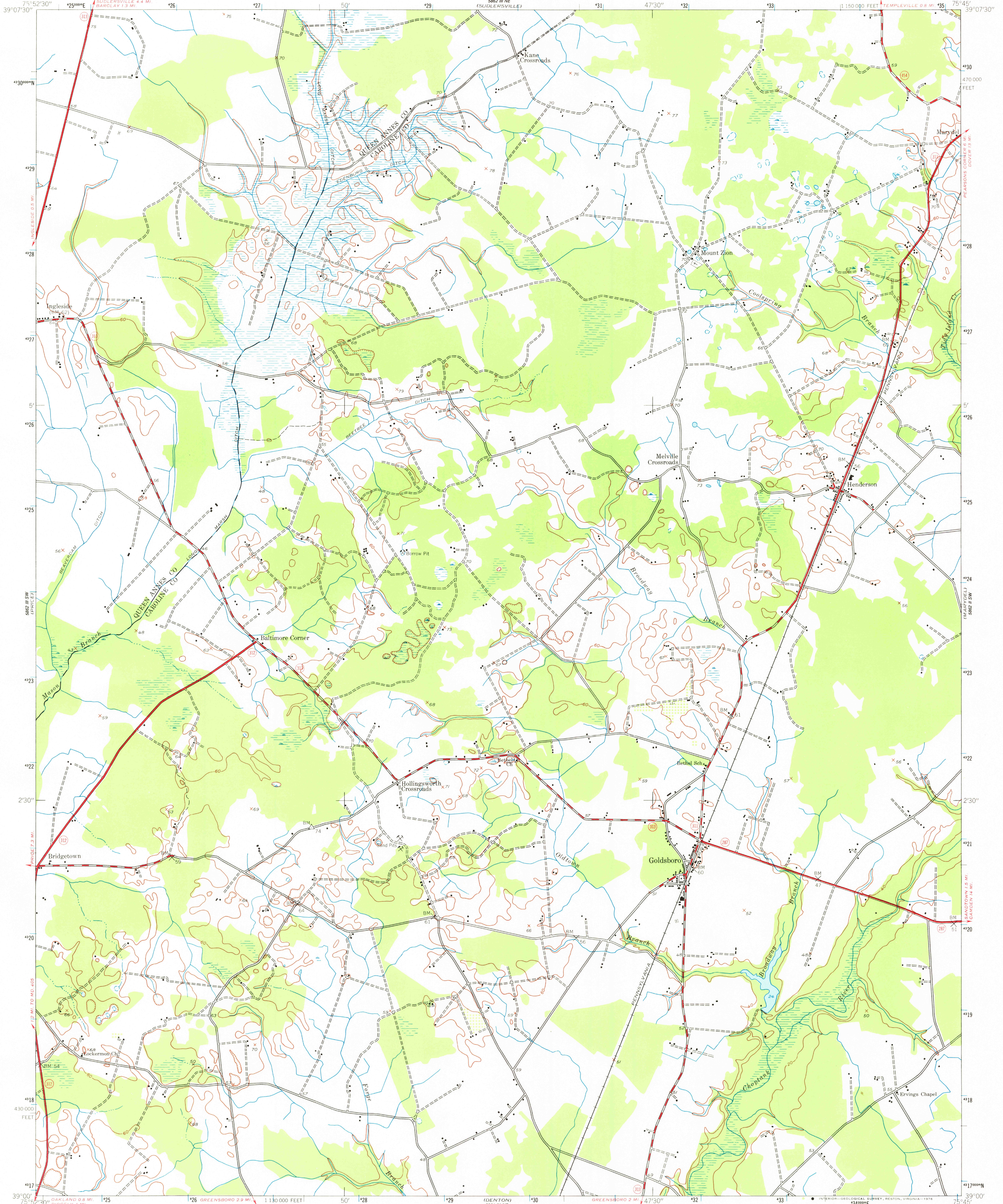


UNITED STATES
DEPARTMENT OF THE INTERIOR
GEOLOGICAL SURVEY

GOLDSBORO QUADRANGLE
MARYLAND
7.5 MINUTE SERIES (TOPOGRAPHIC)
SE/4 BARCLAY 15' QUADRANGLE



Map by the Army Map Service
Published for civil use by the Geological Survey

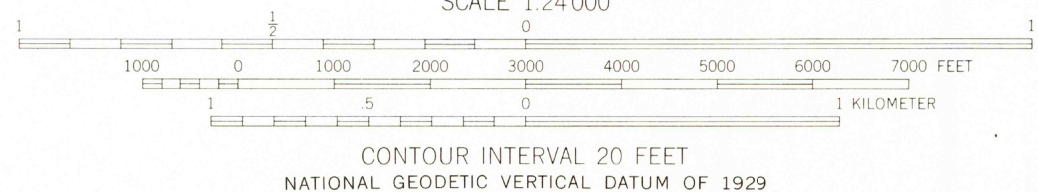
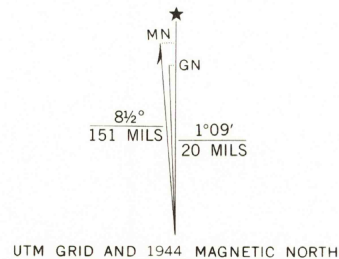
Control by USC&GS

Topography from aerial photographs by photogrammetric methods
and by planetable surveys 1944. Aerial photographs taken 1942

Polyconic projection. 1927 North American datum
10,000-foot grid based on Maryland coordinate system
1000-meter Universal Transverse Mercator grid ticks,
zone 18, shown in blue

Map photoinspected 1974

No major culture or drainage changes observed



THIS MAP COMPLIES WITH NATIONAL MAP ACCURACY STANDARDS
FOR SALE BY U.S. GEOLOGICAL SURVEY, RESTON, VIRGINIA 22092
A FOLDER DESCRIBING TOPOGRAPHIC MAPS AND SYMBOLS IS AVAILABLE ON REQUEST



ROAD CLASSIFICATION	
Heavy duty	Light duty
Medium duty	Unimproved dirt
	State Route

USGS
Historical File
Topographic Division

GOLDSBORO, MD.
SE/4 BARCLAY 15' QUADRANGLE
N 3900—W 7545/7.5

1944
PHOTOINSPECTED 1974
AMS 5862 III SE—SERIES V833

DEC 20 1976

1800