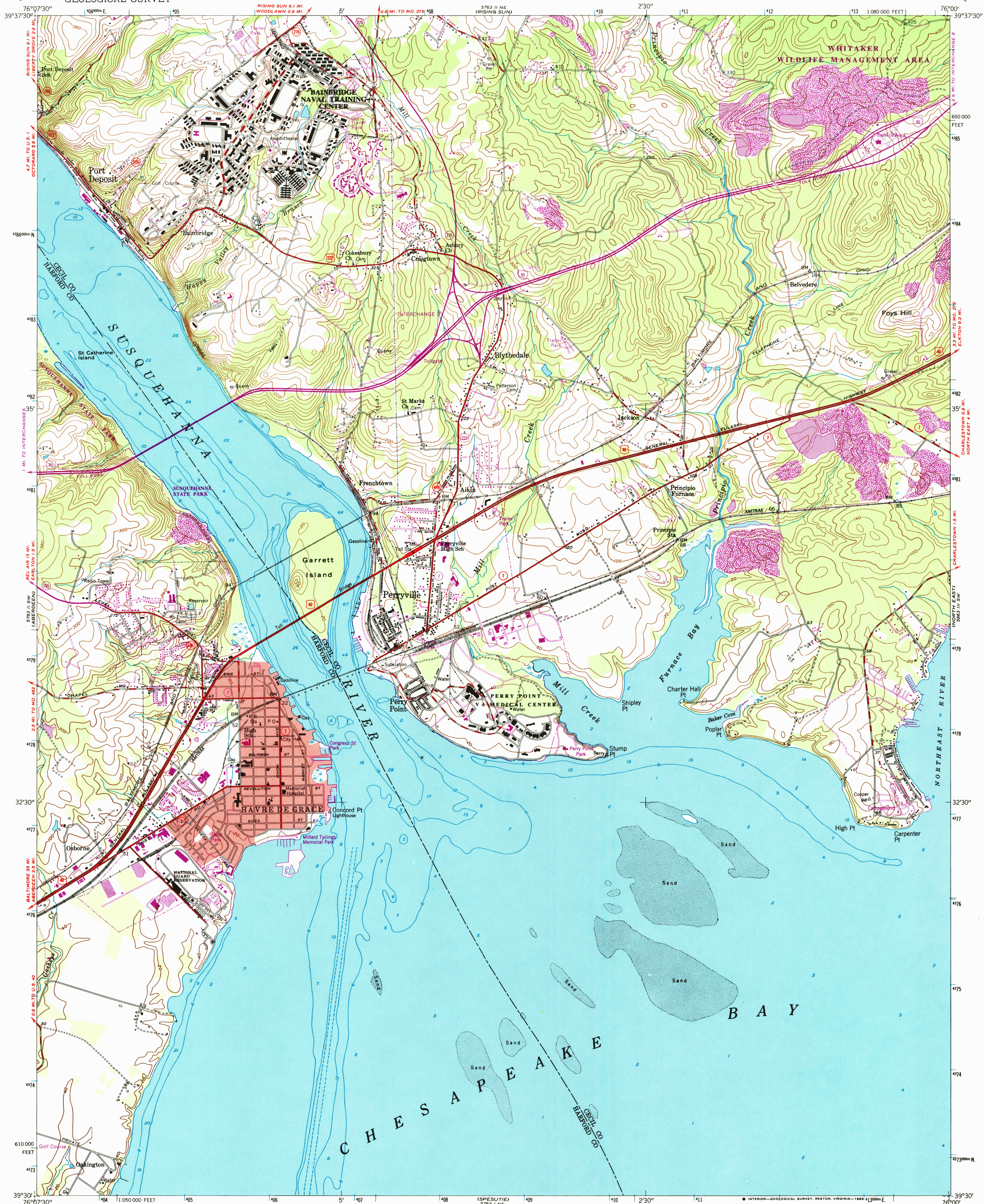


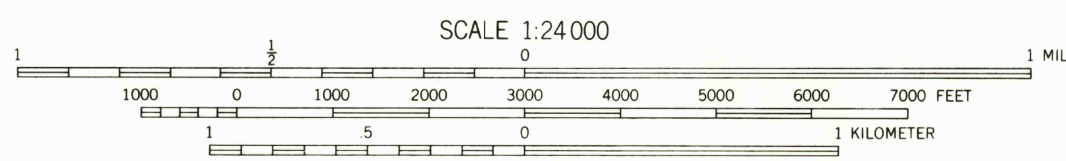
UNITED STATES
DEPARTMENT OF THE INTERIOR
GEOLOGICAL SURVEY

HAVRE DE GRACE QUADRANGLE
MARYLAND
7.5 MINUTE SERIES (TOPOGRAPHIC)



Mapped, edited, and published by the Geological Survey
Control by USGS and NOS/NOAA
Planimetry in part compiled from aerial photographs taken 1952
Topography enlarged from 1:62 500 scale map of Havre de Grace
quadrangle, 15 minute series. Original map by planetable
surveys 1939-1940. Revised 1953
Selected hydrographic data compiled from NOS chart 572 (1947)
This information is not intended for navigational purposes
Polyconic projection, 10,000-foot grid ticks based on
Maryland coordinate system
1000-meter Universal Transverse Mercator grid ticks,
zone 18, shown in blue
1927 North American Datum
To place on the predicted North American Datum 1983
move the projection lines 7 meters south and
29 meters west as shown by dashed corner ticks
Red tint indicates area in which only landmark buildings are shown
There may be private inholdings within the boundaries of
the National or State reservations shown on this map

Revisions shown in purple and woodland compiled
from aerial photographs taken 1981 and other sources
This information not field checked. Map edited 1985



CONTOUR INTERVAL 20 FEET
NATIONAL GEODETIC VERTICAL DATUM OF 1929
DEPTH CURVES AND SOUNDINGS IN FEET—DATUM IS MEAN LOW WATER
THE RELATIONSHIP BETWEEN THE TWO DATUMS IS VARIABLE
SHORLINE SHOWN REPRESENTS THE APPROXIMATE LINE OF MEAN HIGH WATER
THE MEAN RANGE OF TIDE IS 1.9 FEET
THIS MAP COMPLIES WITH NATIONAL MAP ACCURACY STANDARDS
FOR SALE BY U.S. GEOLOGICAL SURVEY, RESTON, VIRGINIA 22092
A FOLDER DESCRIBING TOPOGRAPHIC MAPS AND SYMBOLS IS AVAILABLE ON REQUEST



ROAD CLASSIFICATION
Primary highway, all weather, hard surface
Secondary highway, all weather, hard surface
Light-duty road, all weather, improved surface
Unimproved road, fair or dry weather
Interstate Route
U. S. Route
State Route

HAVRE DE GRACE, MD.
39076-E1-TF-024

RETURN TO:
NHD HISTORICAL MAP ARCHIVES
USGS NATIONAL CENTER, MS-522
RESTON, VA 22092

1953
PHOTOREVISED 1985
DMA 5763 II SE—SERIES V833