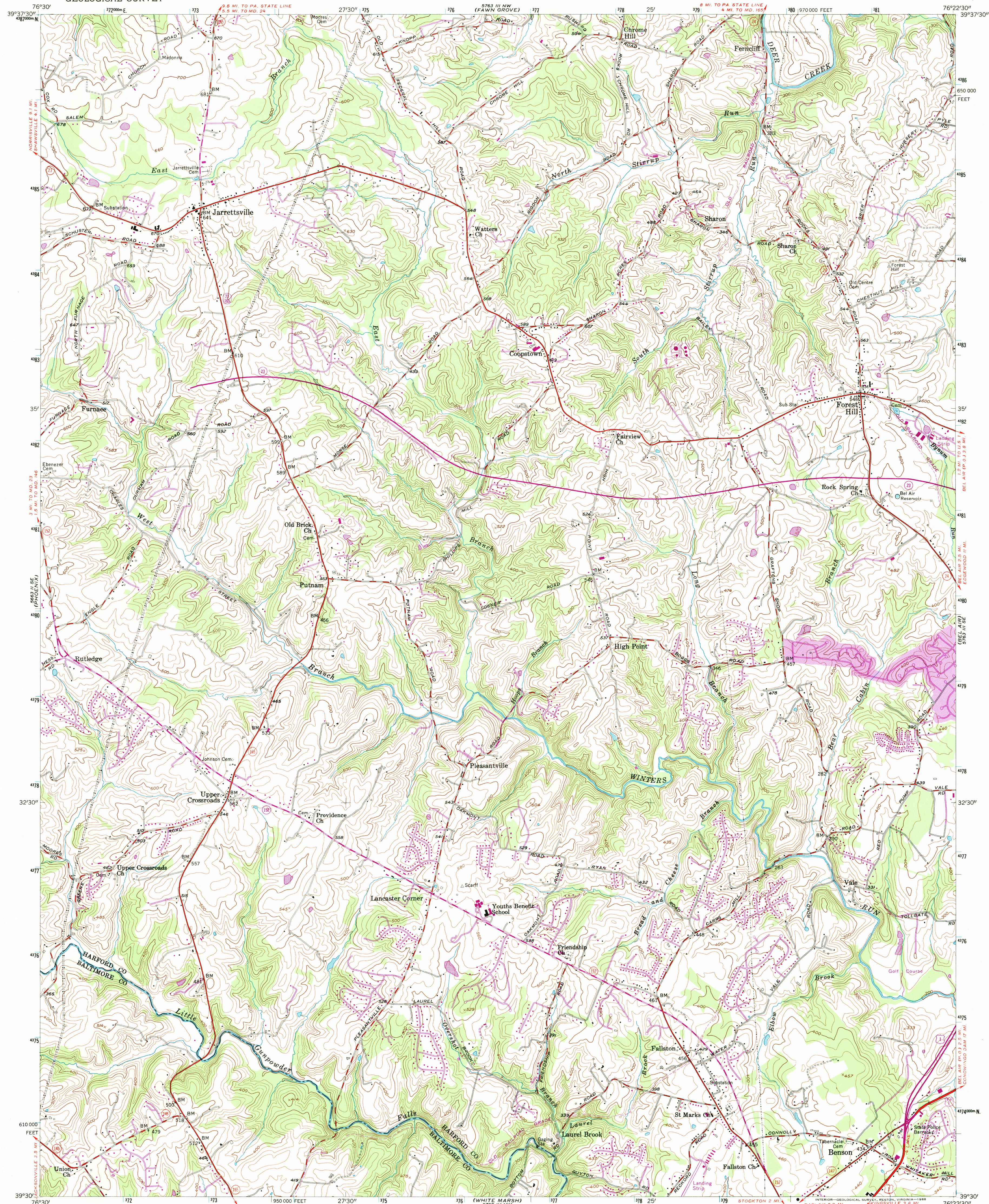


UNITED STATES
DEPARTMENT OF THE INTERIOR
GEOLOGICAL SURVEY

JARRETTSVILLE QUADRANGLE
MARYLAND
7.5 MINUTE SERIES (TOPOGRAPHIC)



Mapped, edited, and published by the Geological Survey

Control by USGS, USC&GS, and USCE

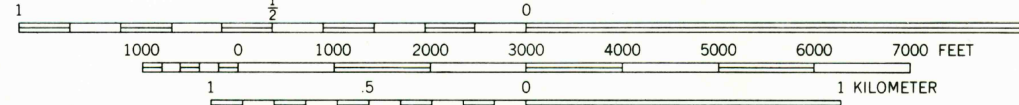
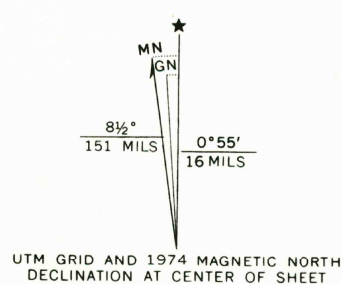
Topography from aerial photographs by multiplex methods
Aerial photographs taken 1954. Field check 1956

Polyconic projection. 1927 North American datum
10,000-foot grid based on Maryland coordinate system
1,000-meter Universal Transverse Mercator grid ticks,
zone 18, shown in blue

Unchecked elevations are shown in brown

Revisions shown in purple compiled from aerial
photographs taken 1974. This information not field checked

To place on the predicted North American Datum 1983,
move the projection lines 7 meters south and
28 meters west as shown by dashed corner ticks



CONTOUR INTERVAL 20 FEET
NATIONAL GEODETIC VERTICAL DATUM OF 1929



ROAD CLASSIFICATION
Heavy-duty ——— Light-duty ———
Medium-duty ——— Unimproved dirt ———
U.S. Route ——— State Route ———

JARRETTSVILLE, MD.

39076-E4-TF-024

1956

PHOTOREVISED 1974
DMA 5763 III SW-SERIES V833

THIS MAP COMPLIES WITH NATIONAL MAP ACCURACY STANDARDS
FOR SALE BY U.S. GEOLOGICAL SURVEY, DENVER, COLORADO 80225, OR RESTON, VIRGINIA 22092
A FOLDER DESCRIBING TOPOGRAPHIC MAPS AND SYMBOLS IS AVAILABLE ON REQUEST

USGS NMD HISTORICAL MAP

MAY 26 1988

REC'D FILE COPY