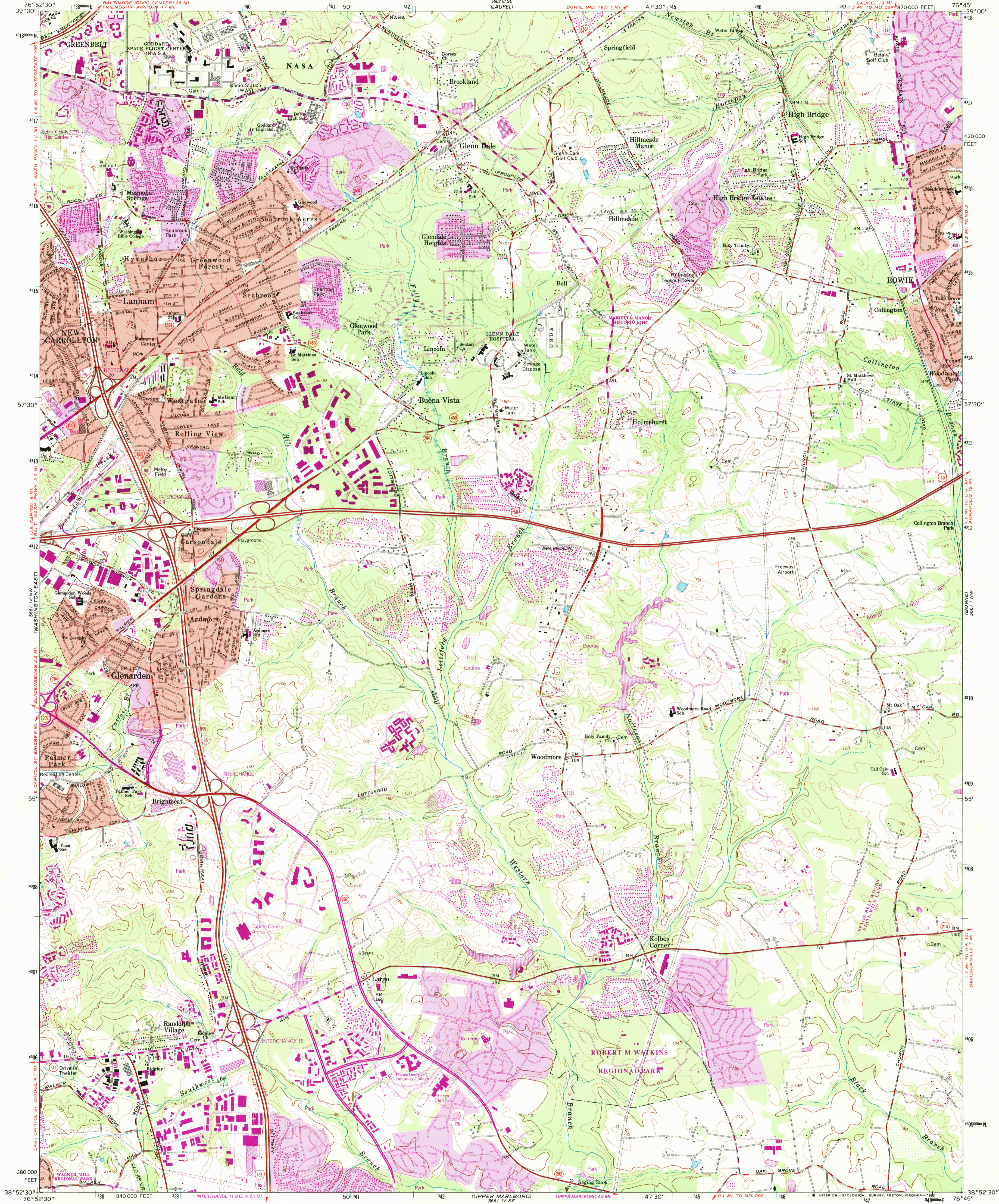
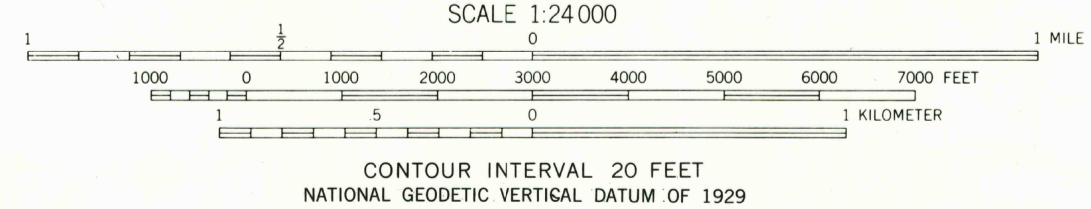
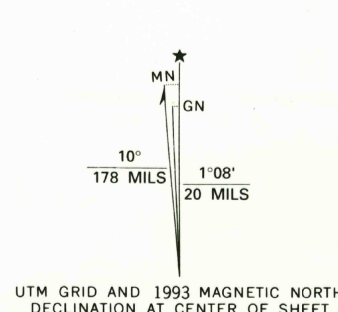


UNITED STATES
DEPARTMENT OF THE INTERIOR
GEOLOGICAL SURVEY

LANHAM QUADRANGLE
MARYLAND—PRINCE GEORGES CO.
7.5 MINUTE SERIES (TOPOGRAPHIC)

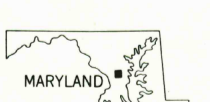


Map by the Army Map Service
Revised by the United States Geological Survey
Control by USGS and NOS/NOAA
Planimetry by photogrammetric methods from aerial photographs
taken 1938 and 1943. Topography by planimetric surveys 1944
Revised 1977
Projection and 10,000-foot grid ticks: Maryland coordinate
system, (Lambert conformal conic)
1000-meter Universal Transverse Mercator grid ticks, zone 18, shown in blue
1927 North American Datum (NAD 27)
North American Datum of 1983 (NAD 83) is shown by dashed corner ticks
The values of the shift between NAD 27 and NAD 83 for 7.5-minute
intersections are given in USGS Bulletin 1875
There may be private inholdings within the boundaries of
the National or State reservations shown on this map
Red tint indicates areas in which only landmark buildings are shown
Fine red dashed lines indicate selected fence and field lines where
generally visible on aerial photographs. This information is unchecked



CONTOUR INTERVAL 20 FEET
NATIONAL GEODETIC VERTICAL DATUM OF 1929
COMPLIES WITH U.S. GEOLOGICAL SURVEY STANDARDS FOR SPATIAL ACCURACY—CLASS 2
FOR SALE BY U.S. GEOLOGICAL SURVEY, DENVER, COLORADO 80225, OR RESTON, VIRGINIA 22092
A FOLDER DESCRIBING TOPOGRAPHIC MAPS AND SYMBOLS IS AVAILABLE ON REQUEST

ROAD CLASSIFICATION
Primary highway, hard surface
Secondary highway, hard surface
Unimproved road
Light-duty road, hard or improved surface
Interstate Route
U. S. Route
State Route
Revisions shown in purple compiled by the U.S. Geological Survey
from aerial photographs taken 1988 and other sources
This information not field checked. Map edited 1993
Information shown in purple may not meet USGS content
standards and may conflict with previously mapped contours
Purple tint indicates extension of urban areas



LANHAM, MD.
38076-H7-TF-024
1965
REVISED 1993
DMA 5661 IV NE-SERIES V833

