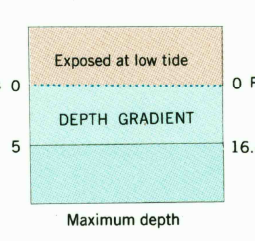
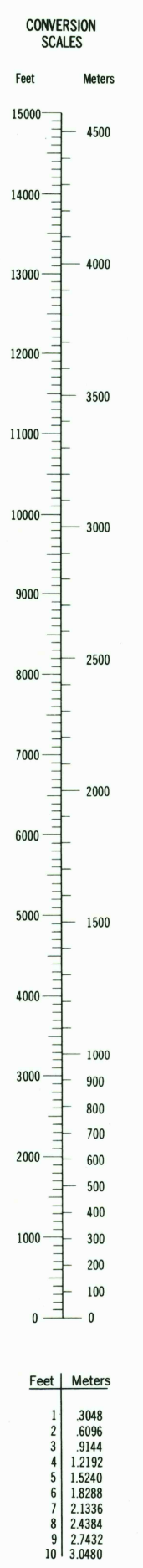
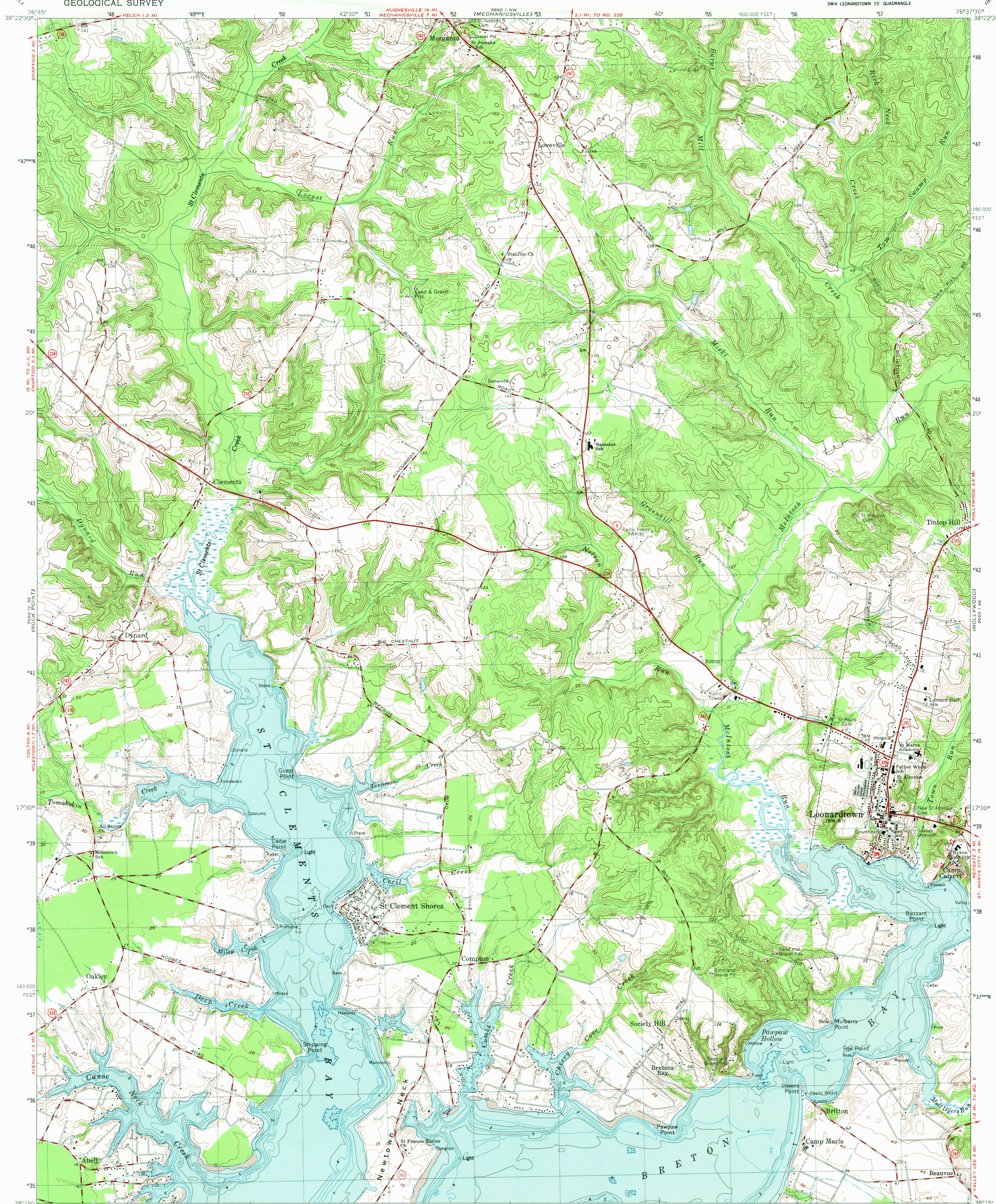


UNITED STATES  
DEPARTMENT OF THE INTERIOR  
GEOLOGICAL SURVEY

LEONARDTOWN QUADRANGLE  
MARYLAND-ST. MARYS CO.  
7.5 MINUTE SERIES (TOPOGRAPHIC-BATHYMETRIC)  
SW/4 LEONARDTOWN 15' QUADRANGLE



Mapped, edited, and published by the Geological Survey and the National Ocean Survey

Control by USGS and NOS/NOAA

Topography by photogrammetric methods from aerial photographs taken 1961. Field checked 1963

Bathymetry compiled by the National Ocean Survey from tide-coordinated hydrographic surveys. This information is not intended for navigational purposes

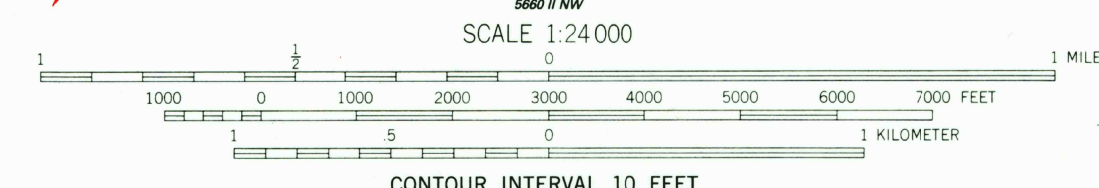
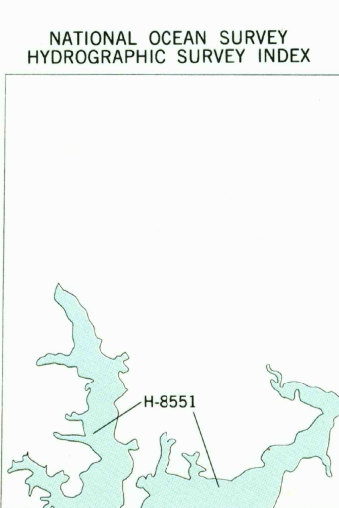
Mean low water (dotted) line and mean high water (heavy solid) line compiled by NOS from tide-coordinated photographs. Apparent shoreline (outer edge of vegetation) shown by light solid line

Polycyclic projection. 10,000-foot grid ticks based on Maryland coordinate system

1000-meter Universal Transverse Mercator grid, zone 18 1927 North American Datum

To place on the predicted North American Datum 1983 move the projection lines 9 meters south and 27 meters west as shown by dashed corner ticks

Fine red dashed lines indicate selected fence and field lines where generally visible on aerial photographs. This information is unchecked



CONTOUR INTERVAL 10 FEET

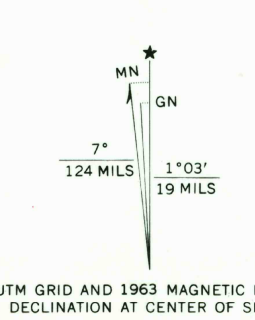
DASHED LINES REPRESENT 5-FOOT CONTOURS

NATIONAL GEODETIC VERTICAL DATUM OF 1929

BATHYMETRIC CONTOUR INTERVAL 1 METER WITH SUPPLEMENTARY 0.5 METER CONTOURS-DATUM IS MEAN LOW WATER

THE RELATIONSHIP BETWEEN THE TWO DATUMS IS VARIABLE

THE MEAN RANGE OF TIDE IS APPROXIMATELY 0.5 METER



ROAD CLASSIFICATION

Heavy-duty Light-duty

Medium-duty Unimproved dirt

State Route

LEONARDTOWN, MD.

SW/4 LEONARDTOWN 15' QUADRANGLE

38076-06-TB-024

1963

BATHYMETRY ADDED 1982

DMA 5660 1 SW-SERIES V833

HYDROGRAPHIC SURVEY INFORMATION

Survey Number	Survey Date	Survey Scale	Survey Line Spacing (Naut. Miles)
H-8551	1960	1:10,000	03-06

BASE MAP COMPLIES WITH NATIONAL MAP ACCURACY STANDARDS

BATHYMETRIC SURVEY DATA COMPLIES WITH INTERNATIONAL HYDROGRAPHIC ORGANIZATION (IHO) SPECIAL PUBLICATION 44 ACCURACY STANDARDS

AND/OR STANDARDS USED AT THE DATE OF THE SURVEY

FOR SALE BY U.S. GEOLOGICAL SURVEY, RESTON, VIRGINIA 22092

AND NATIONAL OCEAN SURVEY, ROCKVILLE, MARYLAND 20852

A FOLDER DESCRIBING TOPOGRAPHIC MAPS AND SYMBOLS IS AVAILABLE ON REQUEST

