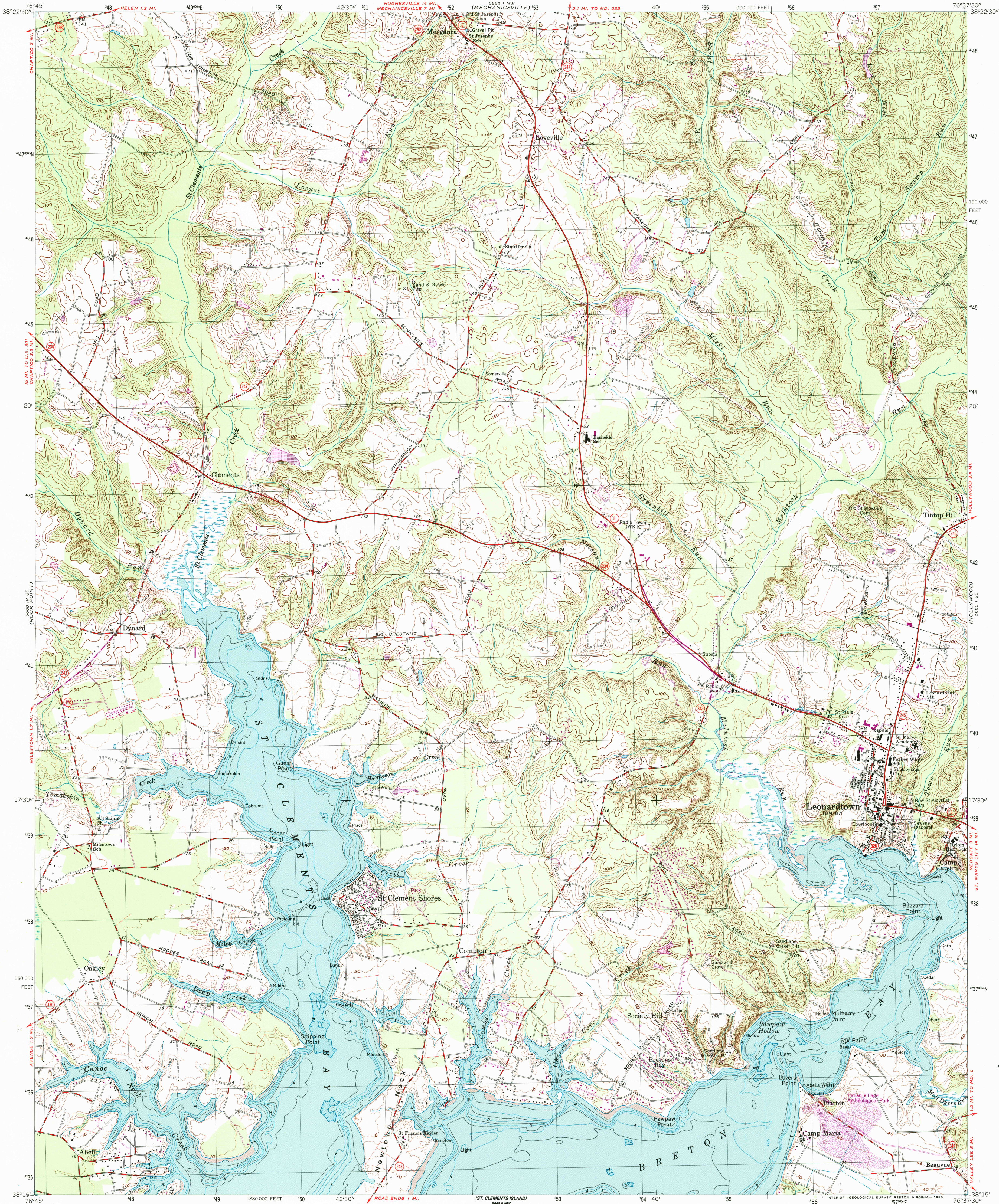


UNITED STATES
DEPARTMENT OF THE INTERIOR
GEOLOGICAL SURVEY

LEONARDTOWN QUADRANGLE
MARYLAND - ST. MARYS CO.
7.5 MINUTE SERIES (TOPOGRAPHIC - BATHYMETRIC)
SW 1/4 LEONARDTOWN 15' QUADRANGLE

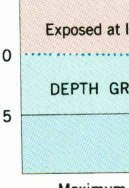


CONVERSION
SCALES



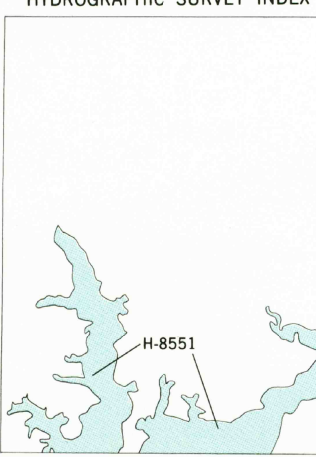
Feet	Meters
1	3048
2	6096
3	9144
4	12192
5	15240
6	18288
7	21336
8	24384
9	27432
10	30480

To convert feet to meters
multiply by .3048
To convert meters to feet
multiply by 3.2808

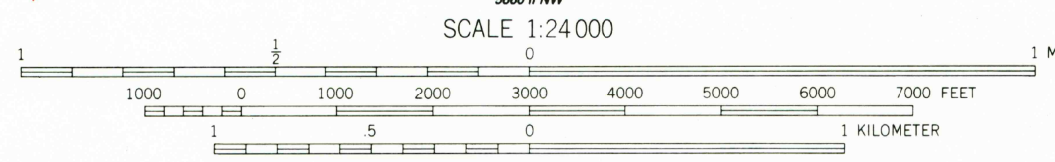


Mapped, edited, and published by the Geological Survey
and the National Ocean Survey
Control by USGS and NOS/NOAA
Topography by photogrammetric methods from aerial photographs taken
1961. Field checked 1963
Bathymetry compiled by the National Ocean Survey from tide-coordinated
hydrographic surveys. This information is not intended for navigational
purposes
Mean low water (dotted) line and mean high water (heavy solid) line
compiled by NOS from tide-coordinated photographs. Apparent
shoreline (outer edge of vegetation) shown by light solid line
Polyconic projection. 10,000-foot grid ticks based on Maryland
coordinate system
1000-meter Universal Transverse Mercator grid, zone 18
1927 North American Datum
To place on the predicted North American Datum 1983 move the
projection lines 9 meters south and 27 meters west as shown by
dashed corner ticks
Fine red dashed lines indicate selected fence and field lines where
generally visible on aerial photographs. This information is unchecked
Revisions shown in purple and woodland compiled from
aerial photographs taken 1981 and other sources
This information not field checked. Map edited 1984

NATIONAL OCEAN SURVEY
HYDROGRAPHIC SURVEY INDEX

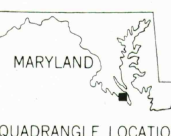


Survey Number	Survey Date	Survey Scale	Survey Line Spacing (Nautical Miles)
H-8551	1960	1:10,000	.03-.06

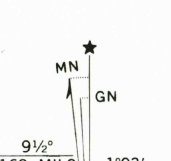


SCALE 1:24,000
CONTOUR INTERVAL 10 FEET
DASHED LINES REPRESENT 5-FOOT CONTOURS
NATIONAL GEODETIC VERTICAL DATUM OF 1929
BATHYMETRIC CONTOUR INTERVAL 1 METER WITH SUPPLEMENTARY
0.5 METER CONTOURS-DATUM IS MEAN LOW WATER
THE RELATIONSHIP BETWEEN THE TWO DATUMS IS VARIABLE
THE MEAN RANGE OF TIDE IS APPROXIMATELY 1.7 METERS

BASE MAP COMPLIES WITH NATIONAL MAP ACCURACY STANDARDS
BATHYMETRIC SURVEY DATA COMPLIES WITH INTERNATIONAL HYDROGRAPHIC
ORGANIZATION (IHO) SPECIAL PUBLICATION 44 ACCURACY STANDARDS
AND/OR STANDARDS USED AT THE DATE OF THE SURVEY
FOR SALE BY U. S. GEOLOGICAL SURVEY, RESTON, VIRGINIA 22092
AND NATIONAL OCEAN SURVEY, ROCKVILLE, MARYLAND 20852
A FOLDER DESCRIBING TOPOGRAPHIC MAPS AND SYMBOLS IS AVAILABLE ON REQUEST



QUADRANGLE LOCATION



RECEIVED
NOV 9 2000
USGS NWED
HISTORICAL MAP ARCHIVES

LEONARDTOWN, MD.
SW 1/4 LEONARDTOWN 15' QUADRANGLE
38076-C6-TB-024

1963
BATHYMETRY ADDED 1982
PHOTOREVISED 1984
DMA 5660 1 SW - SERIES V833

