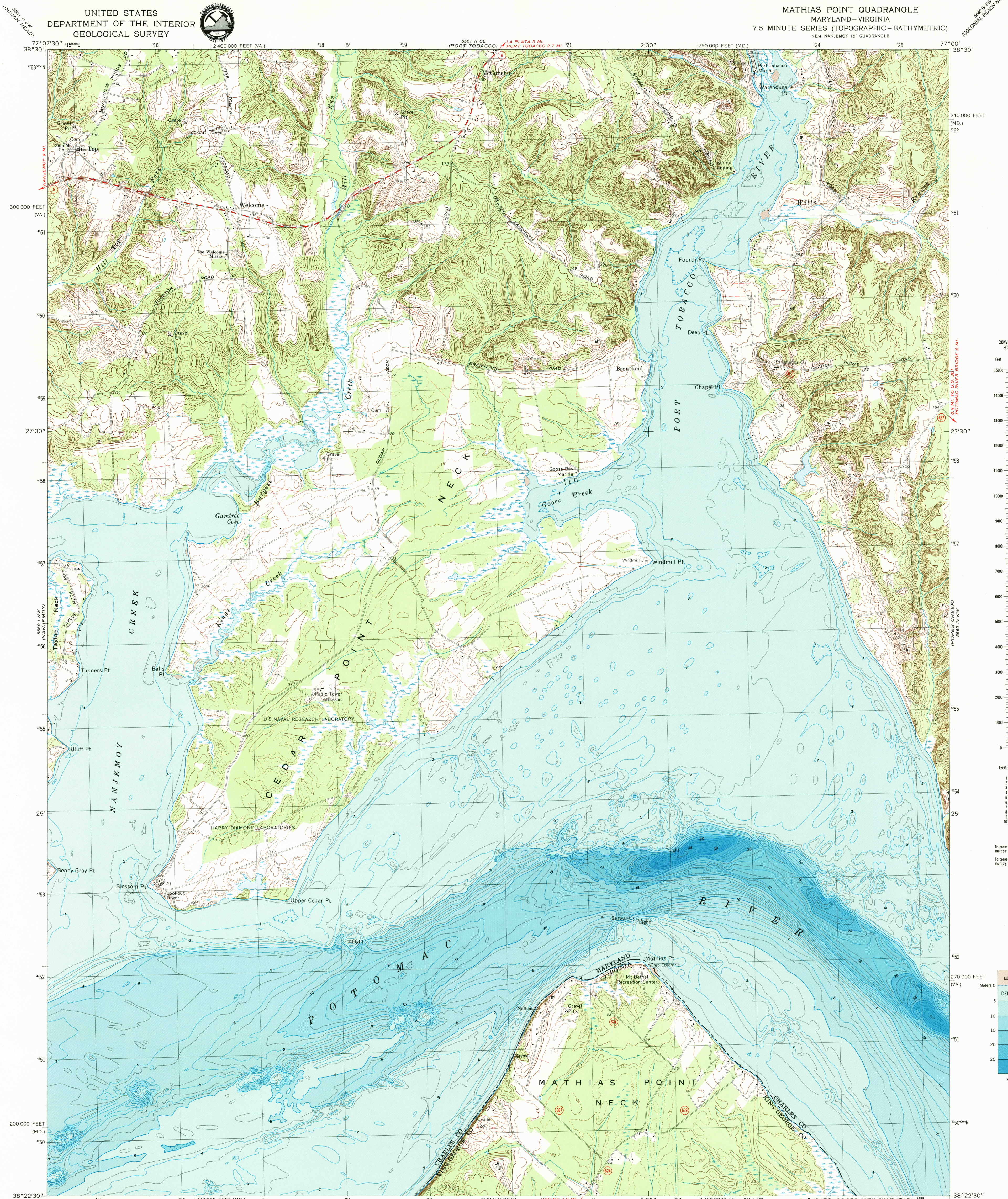


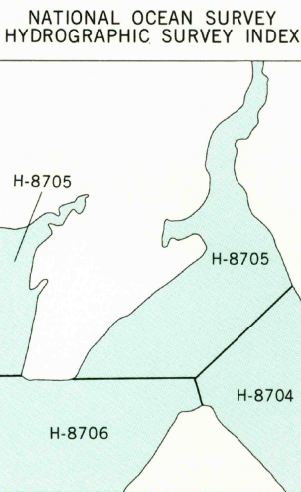
UNITED STATES
DEPARTMENT OF THE INTERIOR
GEOLOGICAL SURVEY



MATHIAS POINT QUADRANGLE
MARYLAND-VIRGINIA
7.5 MINUTE SERIES (TOPOGRAPHIC-BATHYMETRIC)
NE 4 NANJEMOY 15' QUADRANGLE

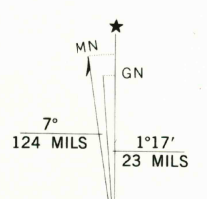


Mapped, edited, and published by the Geological Survey and the National Ocean Survey in cooperation with Commonwealth of Virginia agencies
Control by USGS, NOS/NOAA, and USCE
Topography by photogrammetric methods from aerial photographs taken 1967. Field checked 1968
Bathymetry compiled by the National Ocean Survey from tide-coordinated hydrographic surveys. This information is not intended for navigational purposes
Mean low water (dotted) line and mean high water (heavy solid) line compiled by NOS from tide-coordinated photographs. Apparent shoreline (outer edge of vegetation) shown by light solid line
Polyconic projection, 10,000-foot grid ticks based on Maryland coordinate system and Virginia coordinate system, north zone
1000-meter Universal Transverse Mercator grid, zone 18
1927 North American Datum
To place on the predicted North American Datum 1983 move the projection lines 9 meters south and 26 meters west as shown by dashed corner ticks
Map photoinspected 1982
No major culture or drainage changes observed



Survey Number	Survey Date	Survey Scale	Survey Line Spacing (Naut. Miles)
H-8704	1962	1:10,000	.01-.05
H-8705	1962	1:10,000	.01-.05
H-8706	1962	1:10,000	.01-.05

NATIONAL OCEAN SURVEY
HYDROGRAPHIC SURVEY INDEX
SCALE 1:24,000
CONTOUR INTERVAL 10 FEET
DASHED LINES REPRESENT 5-FOOT CONTOURS
NATIONAL GEODETIC VERTICAL DATUM OF 1929
BATHYMETRIC CONTOUR INTERVAL 1 METER WITH SUPPLEMENTARY 0.5 METER CONTOURS-DATUM IS MEAN LOW WATER
THE RELATIONSHIP BETWEEN THE TWO DATUMS IS VARIABLE
THE MEAN RANGE OF TIDE IS APPROXIMATELY 0.4 METER
BASE MAP COMPLIES WITH NATIONAL MAP ACCURACY STANDARDS
BATHYMETRIC SURVEY DATA COMPLIES WITH INTERNATIONAL HYDROGRAPHIC ORGANIZATION (IHO) SPECIAL PUBLICATION 44 ACCURACY STANDARDS
AND/OR STANDARDS USED AT THE DATE OF THE SURVEY
FOR SALE BY U.S. GEOLOGICAL SURVEY, DENVER, COLORADO 80225, OR RESTON, VIRGINIA 22092
NATIONAL OCEAN SERVICE, ROCKVILLE, MARYLAND 20852
AND VIRGINIA DIVISION OF MINERAL RESOURCES, CHARLOTTESVILLE, VIRGINIA 22903
A FOLDER DESCRIBING TOPOGRAPHIC MAPS AND SYMBOLS IS AVAILABLE ON REQUEST



ROAD CLASSIFICATION
Secondary highway, all weather. Light duty road, all weather.
improved surface
hard surface
Unimproved road, fair or dry weather
State Route

MATHIAS POINT, MD.-VA.
NE 4 NANJEMOY 15' QUADRANGLE
38077-D1-TB-024

1968
BATHYMETRY ADDED 1982
PHOTOINSPECTED 1982
DMA 5560 I NE-SERIES 7833

RETURN TO:
USGS AND HISTORICAL MAP ARCHIVES

MATHIAS POINT
ISBN # 0607236094
YD
TB

