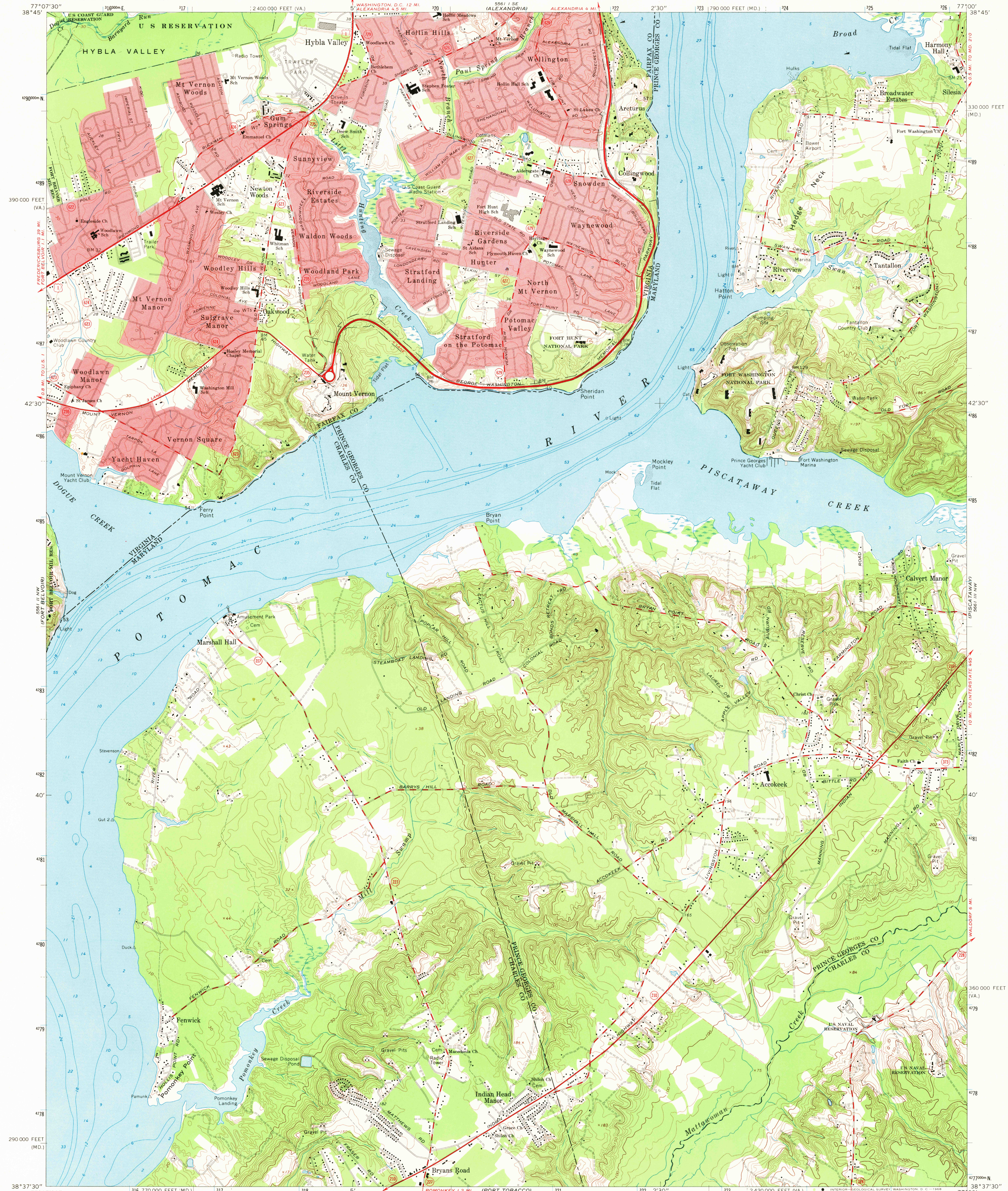
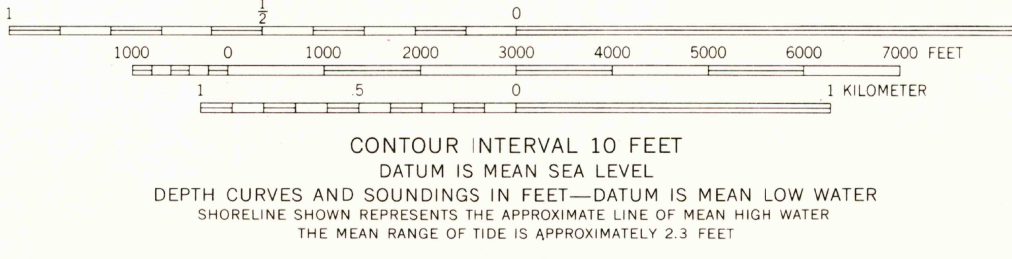
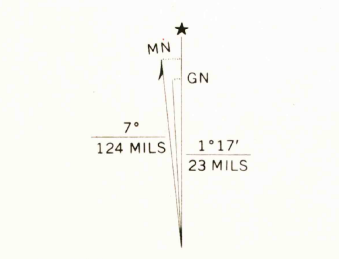


UNITED STATES
DEPARTMENT OF THE INTERIOR
GEOLOGICAL SURVEY

MOUNT VERNON QUADRANGLE
MARYLAND—VIRGINIA
7.5 MINUTE SERIES (TOPOGRAPHIC)
NE/4 INDIAN HEAD 15' QUADRANGLE



Mapped by the Army Map Service
Edited and published by the Geological Survey
Control by USGS, USC&GS, and USCE
Topography by photogrammetric methods from aerial photographs taken 1950. Field checked 1956. Revised by the Geological Survey from aerial photographs taken 1963-1964. Field checked 1966
Selected hydrographic data compiled from USC&GS Chart 560 (1966). This information is not intended for navigational purposes
Polyconic projection. 1927 North American datum
10,000-foot grids based on Maryland coordinate system, and Virginia coordinate system, north zone
1000-meter Universal Transverse Mercator grid ticks, zone 18, shown in blue
Fine red dashed lines indicate selected fence and field lines where generally visible on aerial photographs. This information is unchecked
Red tint indicates areas in which only landmark buildings are shown



THIS MAP COMPLIES WITH NATIONAL MAP ACCURACY STANDARDS
FOR SALE BY U.S. GEOLOGICAL SURVEY, WASHINGTON, D. C. 20242
AND VIRGINIA DIVISION OF MINERAL RESOURCES, CHARLOTTESVILLE, VIRGINIA 22903
A FOLDER DESCRIBING TOPOGRAPHIC MAPS AND SYMBOLS IS AVAILABLE ON REQUEST

USGS
Historical File
Topographic Division



U.S.G.S.
FILE COPY
TOPOGRAPHIC DIVISION

ROAD CLASSIFICATION
Heavy-duty ——— Light-duty ———
Medium-duty ——— Unimproved dirt ———
U.S. Route ——— State Route ———

MOUNT VERNON, MD.—VA.
NE/4 INDIAN HEAD 15' QUADRANGLE
N 3837.5—W 7700/7.5

1966

AMS 5561 II NE—SERIES VB33

9260
JUN 25 1969