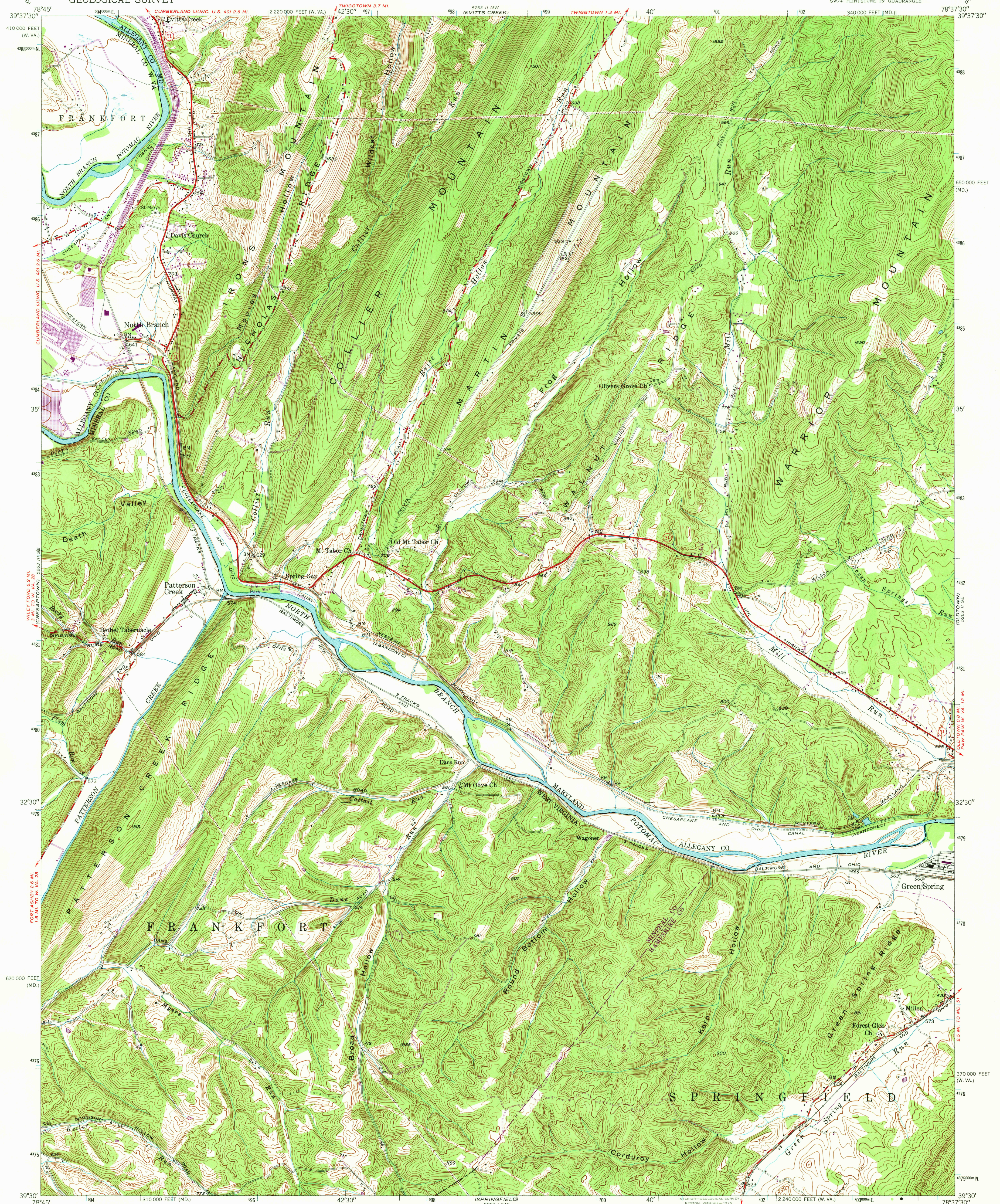


UNITED STATES
DEPARTMENT OF THE INTERIOR
GEOLOGICAL SURVEY

PATTERSON CREEK QUADRANGLE
MARYLAND—WEST VIRGINIA
7.5 MINUTE SERIES (TOPOGRAPHIC)
SW/4 FLINTSTONE 15' QUADRANGLE



Mapped, edited, and published by the Geological Survey
Control by USGS and NOS/NOAA

Topography from aerial photographs by multiplex methods
Aerial photographs taken 1947. Field check 1949

Polyconic projection. 1927 North American datum
10,000-foot grids based on Maryland coordinate system,
and West Virginia coordinate system, north zone
1000-meter Universal Transverse Mercator grid ticks,
zone 17, shown in blue

Revisions shown in purple compiled from aerial photographs
taken 1974. This information not field checked

UTM GRID and 1974 MAGNETIC NORTH
DECLINATION at CENTER OF SHEET

SCALE 1:24,000

CONTOUR INTERVAL 20 FEET
NATIONAL GEODETIC VERTICAL DATUM OF 1929

THIS MAP COMPLIES WITH NATIONAL MAP ACCURACY STANDARDS
FOR SALE BY U. S. GEOLOGICAL SURVEY, RESTON, VIRGINIA 22092
A FOLDER DESCRIBING TOPOGRAPHIC MAPS AND SYMBOLS IS AVAILABLE ON REQUEST

ROAD CLASSIFICATION
Heavy-duty ——— Light-duty ———
Medium-duty ——— Unimproved dirt ———
State Route ———

PATTERSON CREEK, MD.—W. VA.
SW/4 FLINTSTONE 15' QUADRANGLE
N3930—W7837.5/7.5

USGS
HISTORICAL FILE
TOPOGRAPHIC DIVISION

1949
PHOTOREVISED 1974
AMS 5263 II SW—SERIES V833

OCT 17 1975