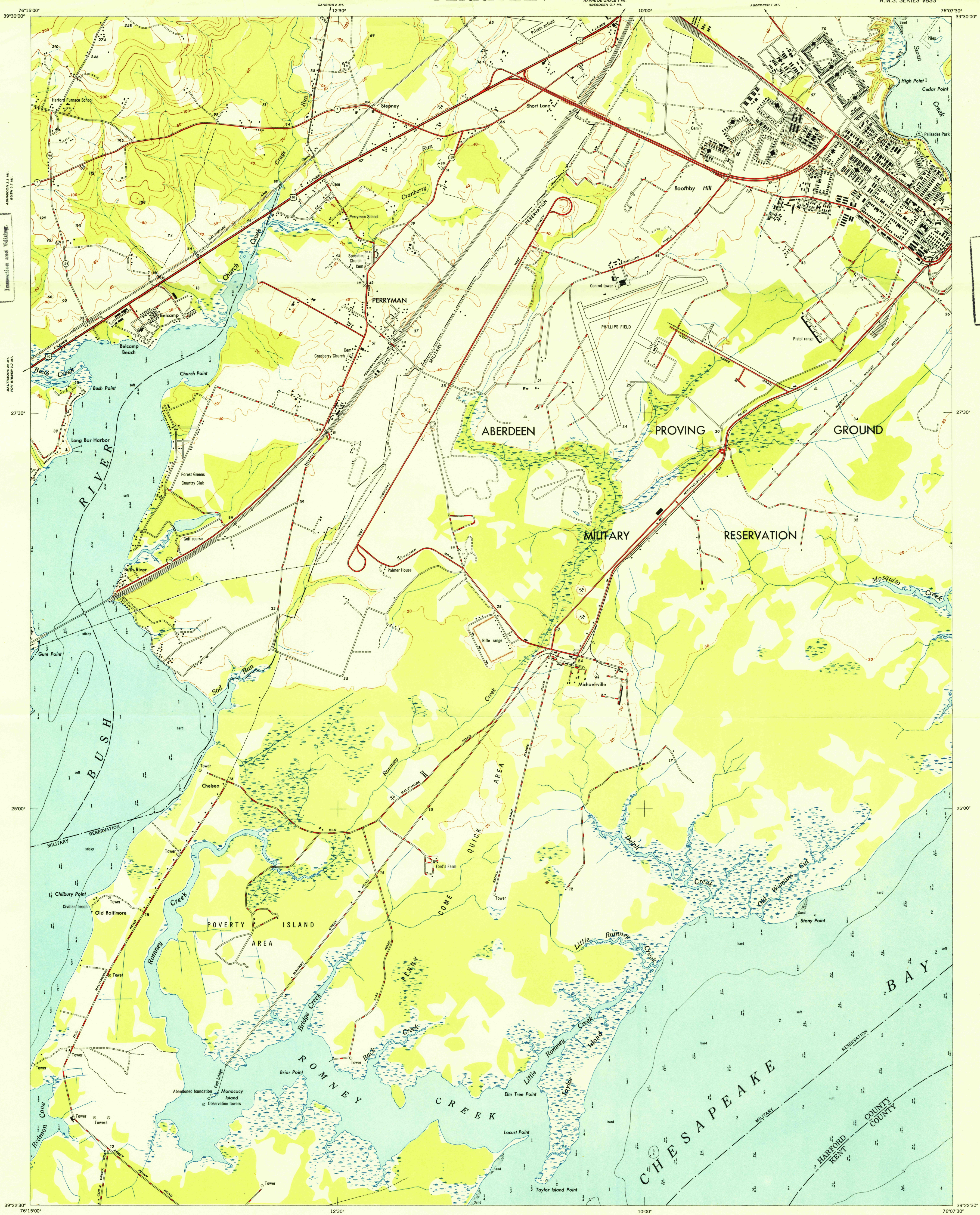
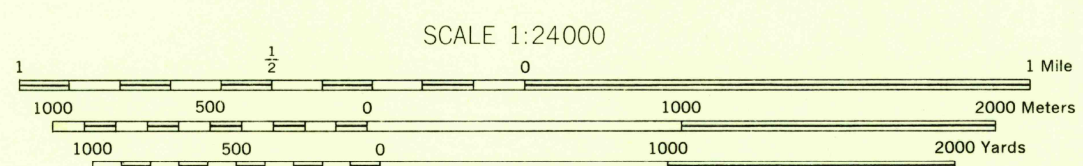


U.S.G.S.  
FILE COPY  
Inspection and Mapping

U.S.G.S.  
FILE COPY  
Inspection and Mapping



AMS 3, 1948.  
Prepared under the direction of the Chief of Engineers by the Army Map Service (AM), Corps of Engineers, Department of the Army, Washington, D. C. Compiled in 1948 from Maryland, 1:31,680, USCGS, Sheet 5762 I NW, 1:64, USCGS Chart No. 572, 1947. Planimetric detail revised from aerial photography by photo-planimetric methods. Aerial photography May 1947. Horizontal and vertical control by USCGS. Map field checked. This map complies with the national standard map accuracy requirements.



**LEGEND**  
ROAD DATA 1948

In developed areas, only through roads are classified

Hard surface, heavy duty road, more than two lanes wide	Loose surface, graded and drained, or narrow hard surface road
Hard surface, heavy duty road, two lanes wide; Federal route marker	Improved dirt road, or street
Hard surface, medium duty road, more than two lanes wide	Unimproved dirt road
Hard surface, medium duty road, two lanes wide; State route marker	Trail

**RAILROADS**

Single track	Double track
Standard gauge	Narrow gauge
Railroad in street	Carline
Spor elevation in feet	Cemetery
Woods or brushwood	Orchard
Vineyard	

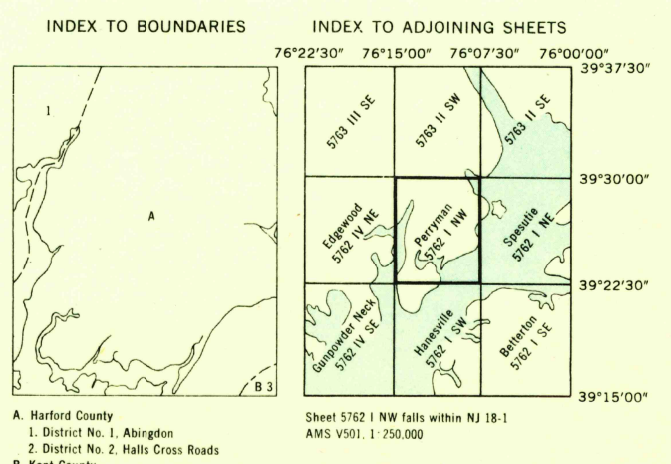
**BOUNDARIES**

National	State (with monument)	County	Election district	Corporate limits	Reservation	Military reservation	Horizontal control point	Bench mark, monument	Bench mark, non-monumented
----------	-----------------------	--------	-------------------	------------------	-------------	----------------------	--------------------------	----------------------	----------------------------

**Intermittent lake and stream**

Swamp, marsh; Dam	Large rapids and falls	Rapids; Falls; Pier	Wreck; Exposed; Sunken	Rocks; Sunken; Awash	Soundings in fathoms	Depth curves in fathoms	Foreshore flats	Limit of danger line; Reef	Man-made shoreline
-------------------	------------------------	---------------------	------------------------	----------------------	----------------------	-------------------------	-----------------	----------------------------	--------------------

REPRINTED FROM MILITARY EDITION FOR CIVIL USE 1949  
SOLD AND DISTRIBUTED BY U. S. GEOLOGICAL SURVEY, WASHINGTON 25, D. C.



U.S.G.S.  
FILE COPY  
Inspection and Mapping

PERRYMAN, MARYLAND  
N3922.5-W7607.5/7.5