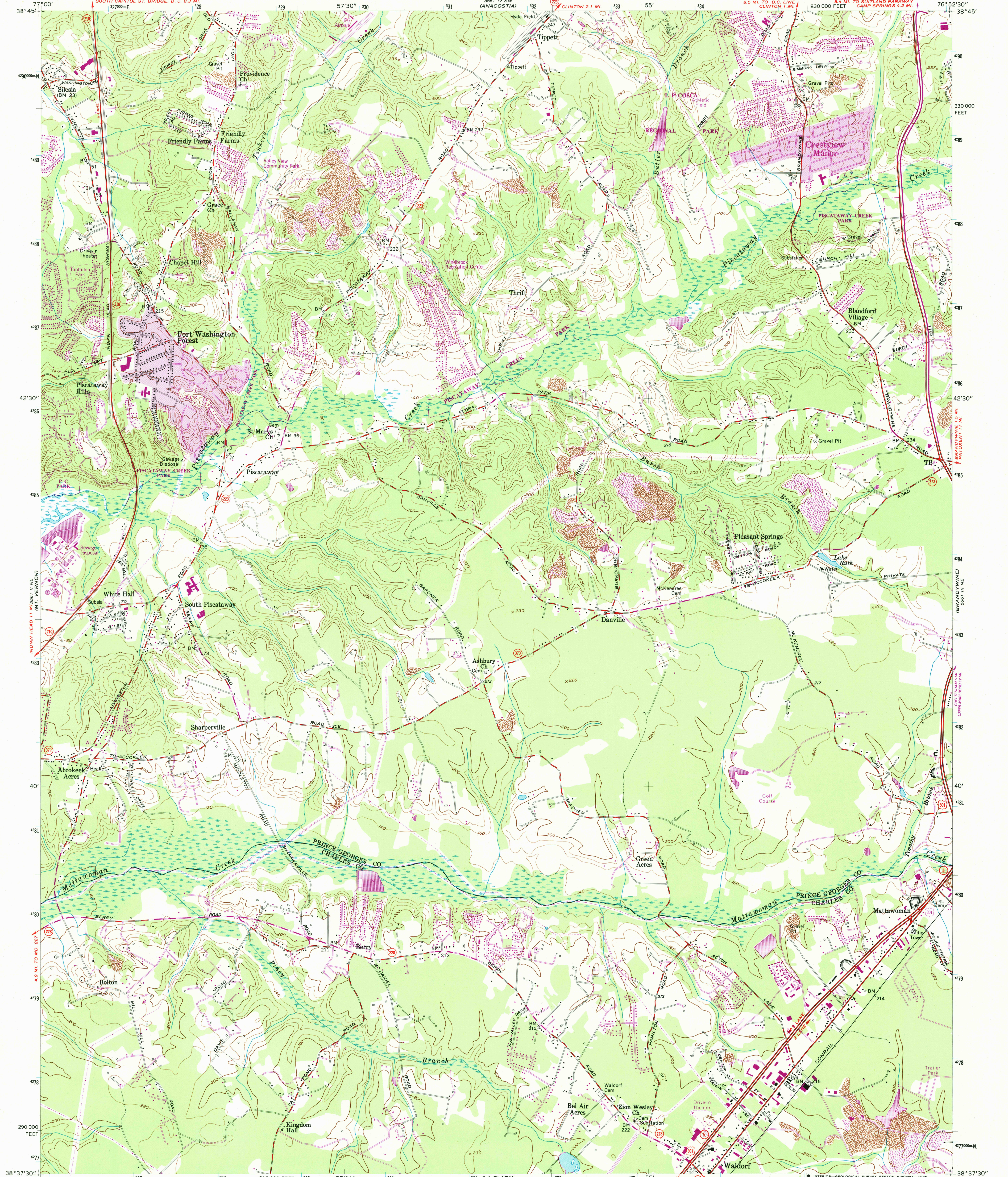


UNITED STATES
DEPARTMENT OF THE INTERIOR
GEOLOGICAL SURVEY

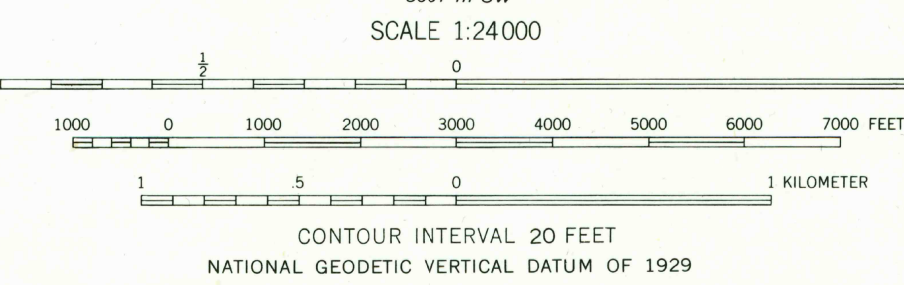
UNITED STATES
DEPARTMENT OF THE ARMY
CORPS OF ENGINEERS

PISCATAWAY QUADRANGLE
MARYLAND
7.5 MINUTE SERIES (TOPOGRAPHIC)



Mapped by the Army Map Service
Edited and published by the Geological Survey
Control by USGS and NOS/NOAA
Planimetry in part by photogrammetric methods from aerial
photographs taken 1943. Topography by planetable surveys 1944
Culture revised by the Geological Survey 1957
Polyconic projection. 10,000-foot grid ticks based on Maryland
coordinate system
1000-meter Universal Transverse Mercator grid ticks,
zone 18, shown in blue
1927 North American Datum
To place on the predicted North American Datum 1983
move the projection lines 9 meters south and
26 meters west as shown by dashed corner ticks
There may be private inholdings within the boundaries of
the National or State reservations shown on this map

Revisions shown in purple and woodland compiled by the
Geological Survey from aerial photographs taken 1981 and
other sources. This information not field checked
Map edited 1985
Purple tint indicates extension of urban areas



ROAD CLASSIFICATION
Heavy-duty ——— Light-duty ———
Medium-duty ——— Unimproved dirt ———
U.S. Route ——— State Route ———

PISCATAWAY, MD.
38076-F8-TF-024
1957
PHOTOREVISED 1985
DMA 5661 III NW - SERIES 8833

FOR SALE BY U. S. GEOLOGICAL SURVEY, RESTON, VIRGINIA 22092
A FOLDER DESCRIBING TOPOGRAPHIC MAPS AND SYMBOLS IS AVAILABLE ON REQUEST