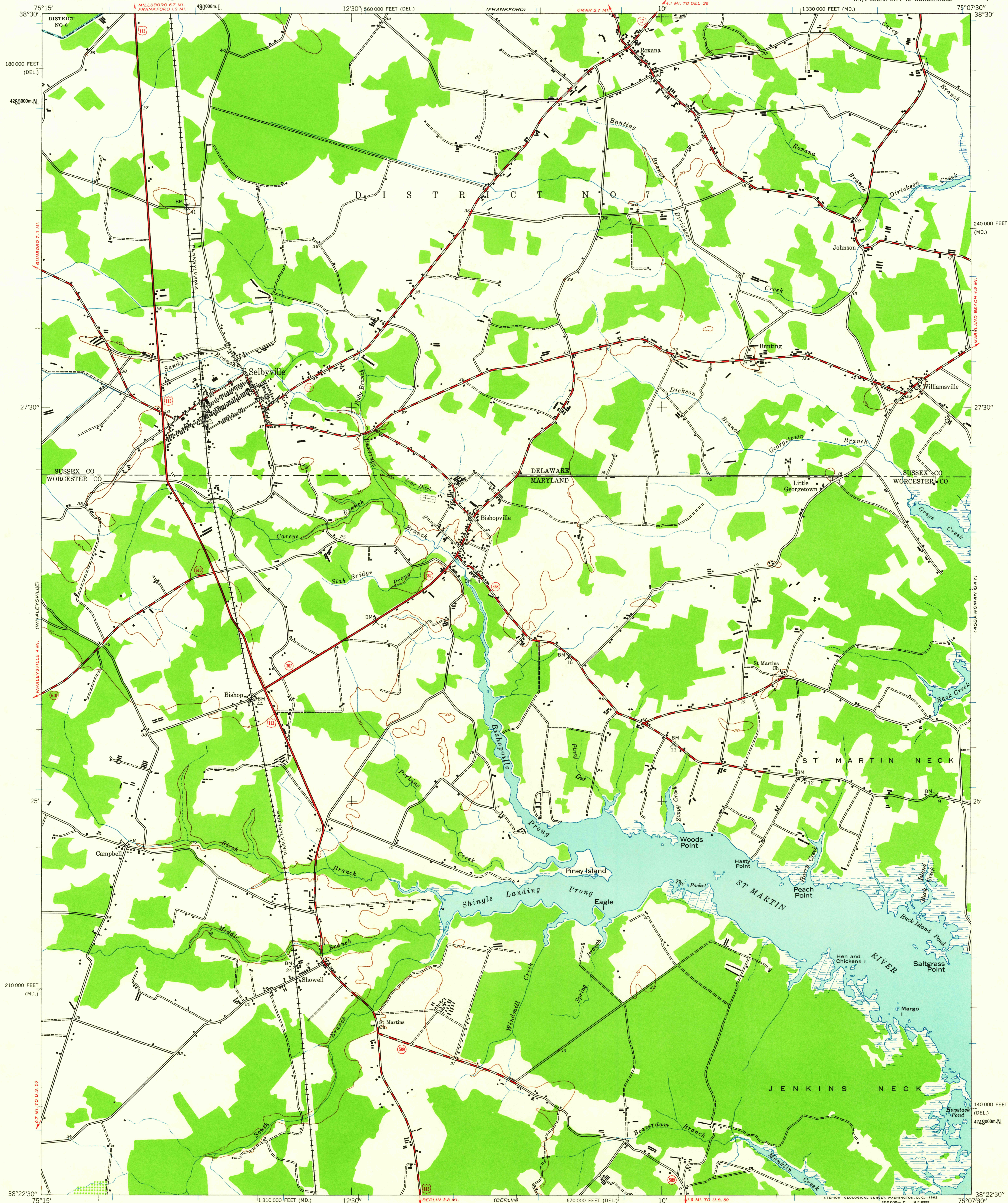


UNITED STATES
DEPARTMENT OF THE INTERIOR
GEOLOGICAL SURVEY

SELBYVILLE QUADRANGLE
MARYLAND-DELAWARE
7.5 MINUTE SERIES (TOPOGRAPHIC)
NW/4 OCEAN CITY 15' QUADRANGLE



Mapped by the Army Map Service
Published for civil use by the Geological Survey
Control by USC&GS

Topography by photogrammetric methods from aerial photographs
taken 1942 and planetable surveys 1943

Polyconic projection. 1927 North American datum
10,000-foot grids based on Maryland coordinate system
and Delaware coordinate system
1000-meter Universal Transverse Mercator grid ticks,
zone 18, shown in blue

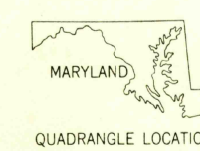
8°
TRUE NORTH
MAGNETIC NORTH
APPROXIMATE MEAN
DECLINATION, 1943

SCALE 1:24,000
1 0 1000 2000 3000 4000 5000 6000 7000 FEET
1 KILOMETER
CONTOUR INTERVAL 20 FEET
DATUM IS MEAN SEA LEVEL

SHORELINE SHOWN REPRESENTS THE APPROXIMATE LINE OF MEAN HIGH WATER
THE MEAN RANGE OF TIDE IS APPROXIMATELY 1 FOOT

THIS MAP COMPLIES WITH NATIONAL MAP ACCURACY STANDARDS
FOR SALE BY U. S. GEOLOGICAL SURVEY, WASHINGTON 25, D. C.
A FOLDER DESCRIBING TOPOGRAPHIC MAPS AND SYMBOLS IS AVAILABLE ON REQUEST

USGS
Historical File
Topographic Division



QUADRANGLE LOCATION

ROAD CLASSIFICATION
Heavy-duty ——— Light-duty ———
Medium-duty ——— Unimproved dirt ———
U. S. Route ——— State Route ———

SELBYVILLE, MD.-DEL.
NW/4 OCEAN CITY 15' QUADRANGLE
N 3822.5-W 7507.5/7.5

1943

AUG - 9 1932

2640