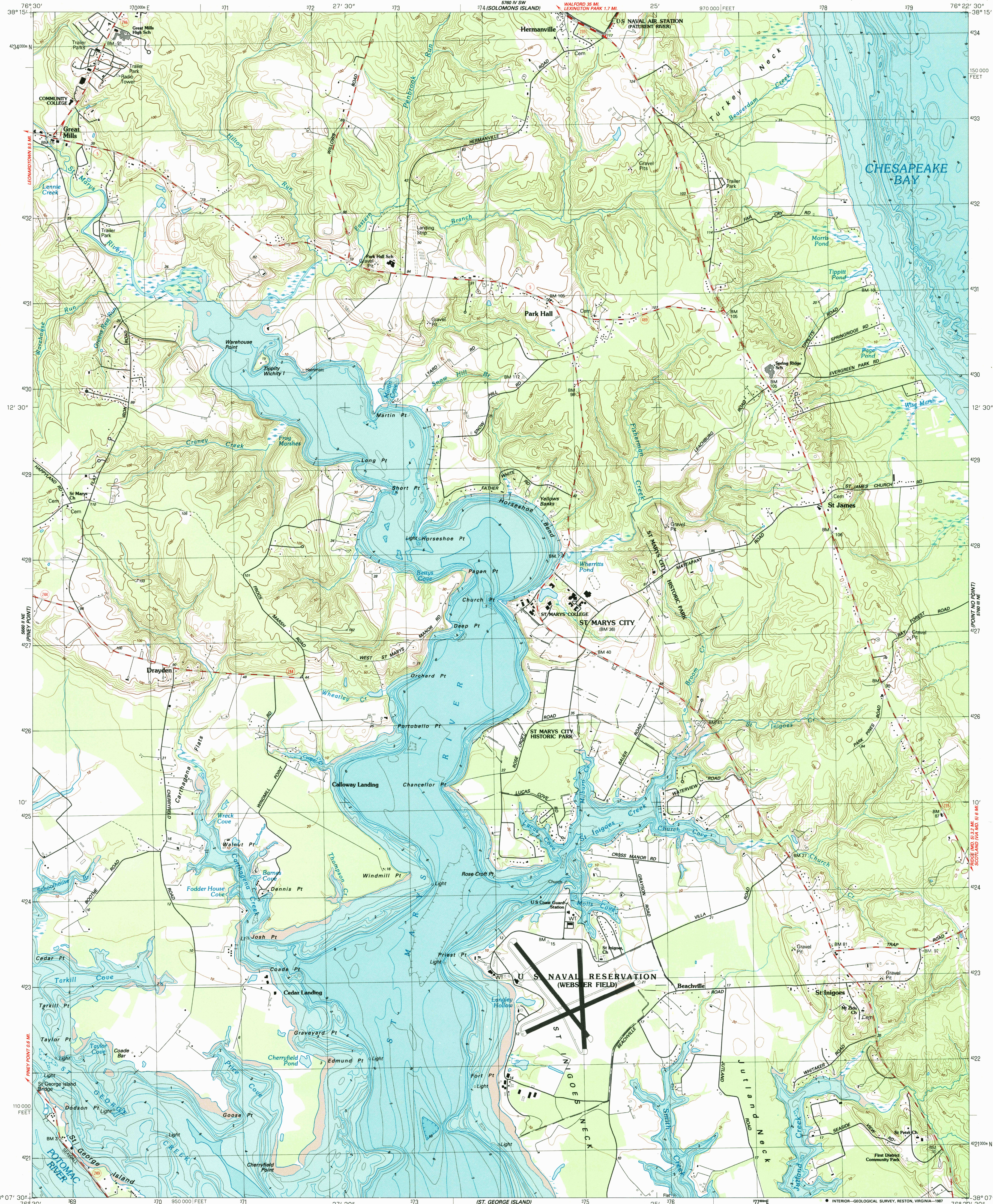


UNITED STATES  
DEPARTMENT OF THE INTERIOR  
GEOLOGICAL SURVEY

ST. MARYS CITY QUADRANGLE  
MARYLAND-ST. MARYS CO.  
7.5 MINUTE SERIES (TOPOGRAPHIC-BATHYMETRIC)

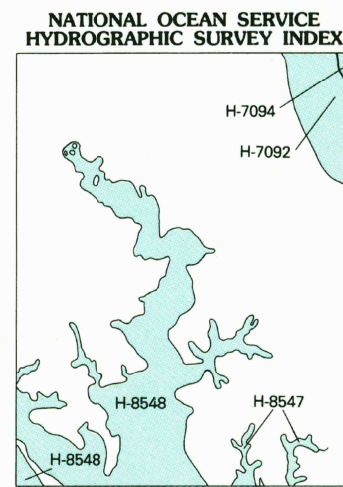


Produced by the United States Geological Survey  
and the National Ocean Service  
Control by USGS, NOS/NOAA, and DMA  
Topography by photogrammetric methods from aerial photographs  
taken 1981. Field checked 1982. Map edited 1987  
Supersedes Army Map Service map dated 1943  
Bathymetry compiled by the National Ocean Survey from  
tide-coordinated hydrographic surveys. This information is  
not intended for navigational purposes  
Mean low water (dotted line) and mean high water (heavy  
solid) line compiled by NOS from tide-coordinated aerial  
photographs. Apparent shoreline (outer edge of vegetation)  
shown by light solid line  
Projection and 10,000-foot grid ticks: Maryland coordinate  
system (Lambert conformal conic)  
1000-meter Universal Transverse Mercator grid, zone 18  
1927 North American Datum  
To place on the predicted North American Datum 1983,  
move the projection lines 9 meters south and  
28 meters west as shown by dashed corner ticks  
There may be private inholdings within the boundaries of  
the National or State reservations shown on this map  
Fine red dashed lines indicate selected fence and field lines where  
generally visible on aerial photographs. This information is unchecked



UTM GRID AND 1987 MAGNETIC NORTH  
DECLINATION AT CENTER OF SHEET

SCALE 1:24 000  
1 000 0 1000 2000 3000 4000 5000 6000 7000 8000 9000 10 000  
1 000 0 1000 2000 3000 4000 5000 6000 7000 8000 9000 10 000  
METERS  
CONTOUR INTERVAL 10 FEET  
NATIONAL GEODETIC VERTICAL DATUM OF 1929  
BATHYMETRIC CONTOUR INTERVAL 1 METER WITH SUPPLEMENTARY  
0.5 METER CONTOURS-DATUM IS MEAN LOW WATER  
THE RELATIONSHIP BETWEEN THE TWO DATUMS IS VARIABLE



ROAD CLASSIFICATION  
Primary highway, hard surface .....  
Secondary highway, hard surface .....  
Unimproved road .....  
Interstate Route .....  
U. S. Route .....  
State Route .....

ST. MARYS CITY, MD.

38076-B4-TB-024

1987

DMA 5760 III NW-SERIES V833

HYDROGRAPHIC SURVEY INFORMATION				
SURVEY NUMBER	SURVEY DATE	SURVEY SCALE	SURVEY LINE SPACING (NAUT. MILES)	
H-7094	1946	1:10,000	02-15	
H-7092	1946-48	1:20,000	02-18	
H-8548	1959-60	1:10,000	03-10	
H-8547	1960	1:10,000	02-07	

THIS MAP COMPLIES WITH NATIONAL MAP ACCURACY STANDARDS  
BATHYMETRIC SURVEY DATA COMPLETES WITH INTERNATIONAL HYDROGRAPHIC  
ORGANIZATION (IHO) SPECIAL PUBLICATION 44 ACCURACY STANDARDS  
AND/OR STANDARDS USED AT THE DATE OF THE SURVEY  
FOR SALE BY U. S. GEOLOGICAL SURVEY, DENVER, COLORADO 80225, OR RESTON, VIRGINIA 22092  
AND NATIONAL OCEAN SERVICE, ROCKVILLE, MARYLAND 20852  
A FOLDER DESCRIBING TOPOGRAPHIC MAPS AND SYMBOLS IS AVAILABLE ON REQUEST

