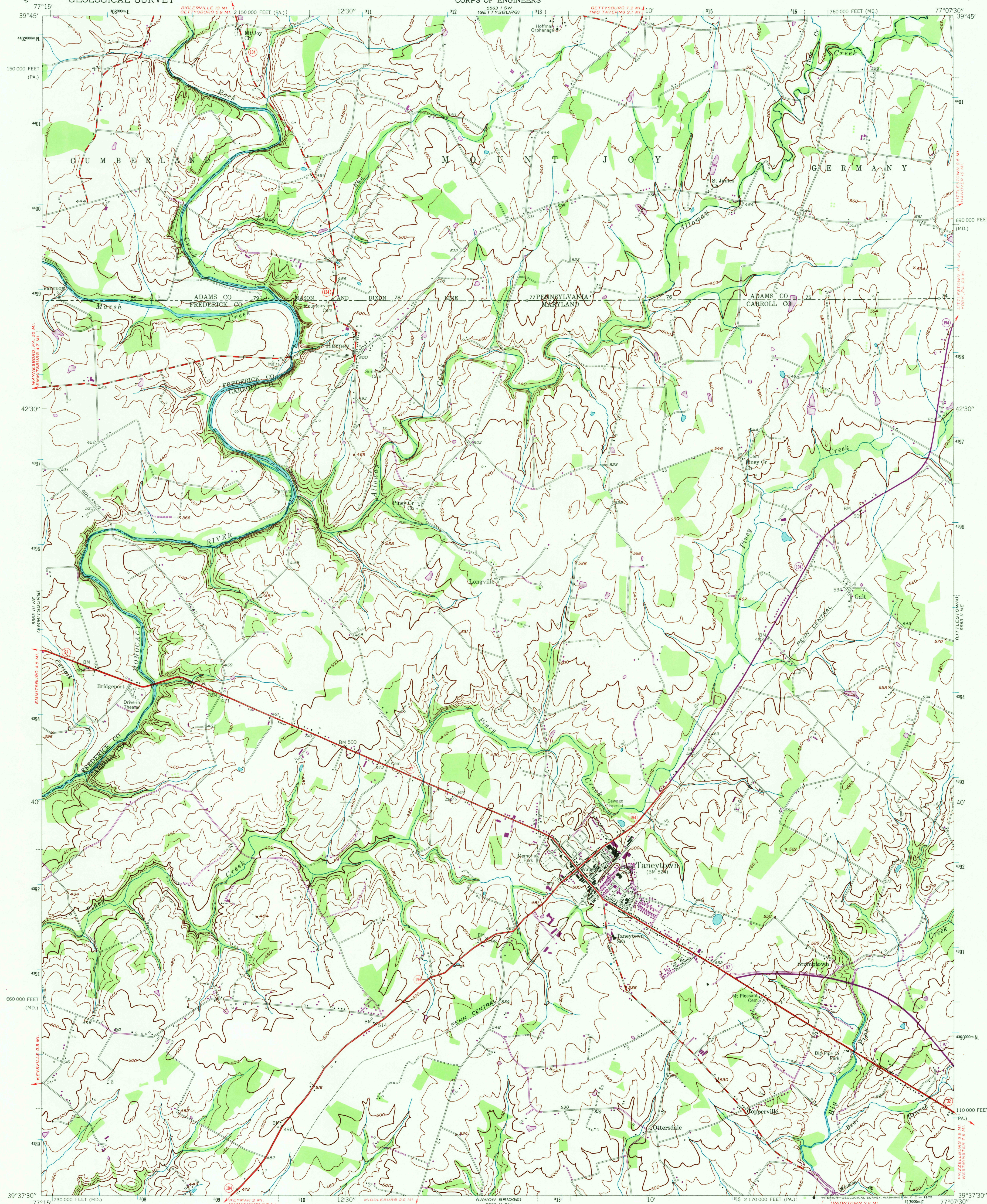


UNITED STATES
DEPARTMENT OF THE INTERIOR
GEOLOGICAL SURVEY

UNITED STATES
DEPARTMENT OF THE ARMY
CORPS OF ENGINEERS

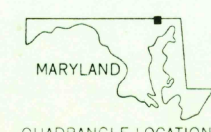
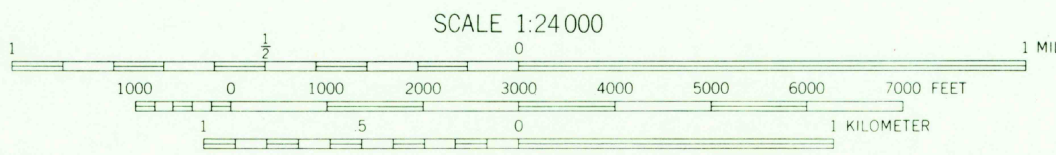
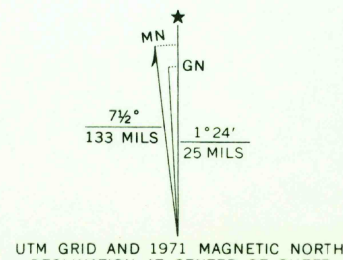
TANEYTOWN QUADRANGLE
MARYLAND-PENNSYLVANIA
7.5 MINUTE SERIES (TOPOGRAPHIC)



Mapped by the Army Map Service
Edited and published by the Geological Survey
Control by USGS and USC&GS

Topography from aerial photographs by stereophotogrammetric methods. Aerial photographs taken 1942
Culture revised by the Geological Survey 1953
Polyconic projection. 1927 North American datum
10,000-foot grid based on Maryland coordinate system and Pennsylvania coordinate system, south zone
1000-meter Universal Transverse Mercator grid ticks, zone 18, shown in blue

Revisions shown in purple compiled by the Geological Survey from aerial photographs taken 1971. This information not field checked



ROAD CLASSIFICATION
Heavy-duty 4 LANE 6 LANE Light-duty
Medium-duty 2 LANE 4 LANE Unimproved dirt
U. S. Route State Route

USGS
Historical File
Topographic Division

TANEYTOWN, MD.-PA.
N 3937.5-W 7707.5/7.5

1953
PHOTOREVISED 1971
AMS 5563 II NW-SERIES V833

THIS MAP COMPLIES WITH NATIONAL MAP ACCURACY STANDARDS
FOR SALE BY U. S. GEOLOGICAL SURVEY, WASHINGTON, D. C. 20242
A FOLDER DESCRIBING TOPOGRAPHIC MAPS AND SYMBOLS IS AVAILABLE ON REQUEST

FILE COPY
FEB 1 1972

MAP INFORMATION OFFICE
GEOLOGICAL SURVEY