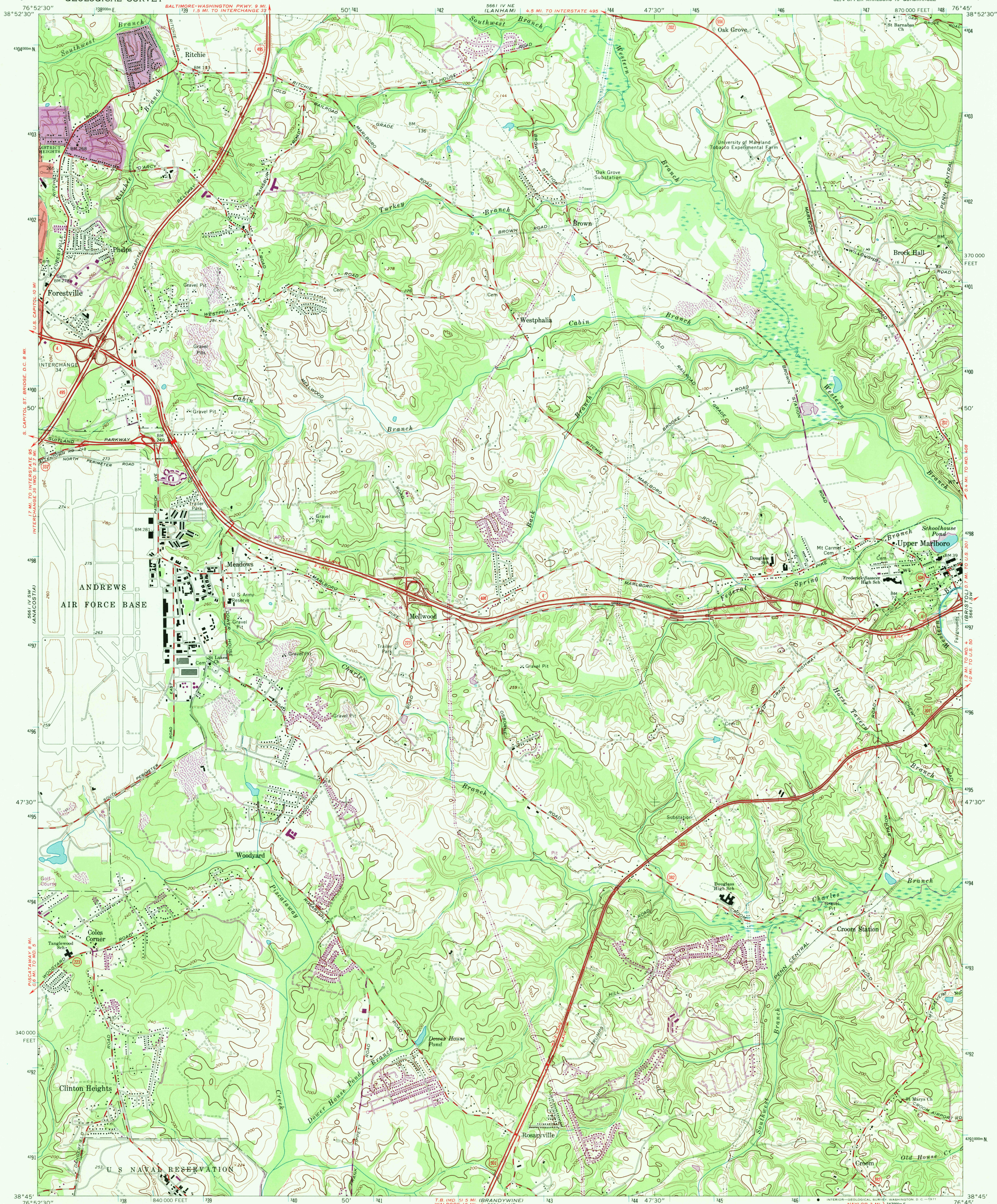
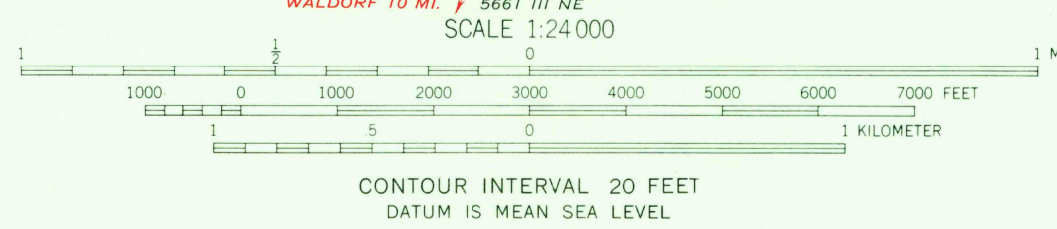
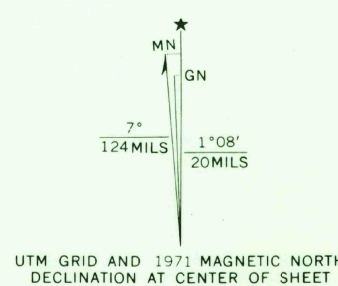


UNITED STATES  
DEPARTMENT OF THE INTERIOR  
GEOLOGICAL SURVEY

UPPER MARLBORO QUADRANGLE  
MARYLAND-PRINCE GEORGES CO.  
7.5 MINUTE SERIES (TOPOGRAPHIC)  
SE/4 UPPER MARLBORO 15' QUADRANGLE



Mapped by the Army Map Service  
Edited and published by the Geological Survey  
Control by USGS, USC&GS, and WSSC  
Planimetry by photogrammetric methods from aerial photographs  
taken 1937, 1938, and 1943. Topography by planetable surveys 1944  
Revised by the Geological Survey 1965  
Polyconic projection 1927 North American datum  
10,000-foot grid based on Maryland coordinate system  
1000-meter Universal Transverse Mercator grid ticks,  
zone 18, shown in blue  
Fine red dashed lines indicate selected fence and field lines where  
generally visible on aerial photographs. This information is unchecked  
Red tint indicates areas in which only landmark buildings are shown



USGS  
Historical File  
Topographic Division



ROAD CLASSIFICATION  
Heavy-duty ——— Light-duty ———  
Medium-duty ——— Unimproved dirt ———  
Interstate Route U.S. Route State Route

UPPER MARLBORO, MD.  
SE/4 UPPER MARLBORO 15' QUADRANGLE  
N3845—W7645/7.5

1965  
PHOTOREVISED 1971  
AMS 5661 IV SE—SERIES V833

THIS MAP COMPLIES WITH NATIONAL MAP ACCURACY STANDARDS  
FOR SALE BY U.S. GEOLOGICAL SURVEY, WASHINGTON, D.C. 20242  
A FOLDER DESCRIBING TOPOGRAPHIC MAPS AND SYMBOLS IS AVAILABLE ON REQUEST

Revisions shown in purple compiled by the Geological Survey from  
aerial photographs taken 1971. This information not field checked  
Purple tint indicates extension of urban areas

5495  
3P50  
OCT 1 1971

