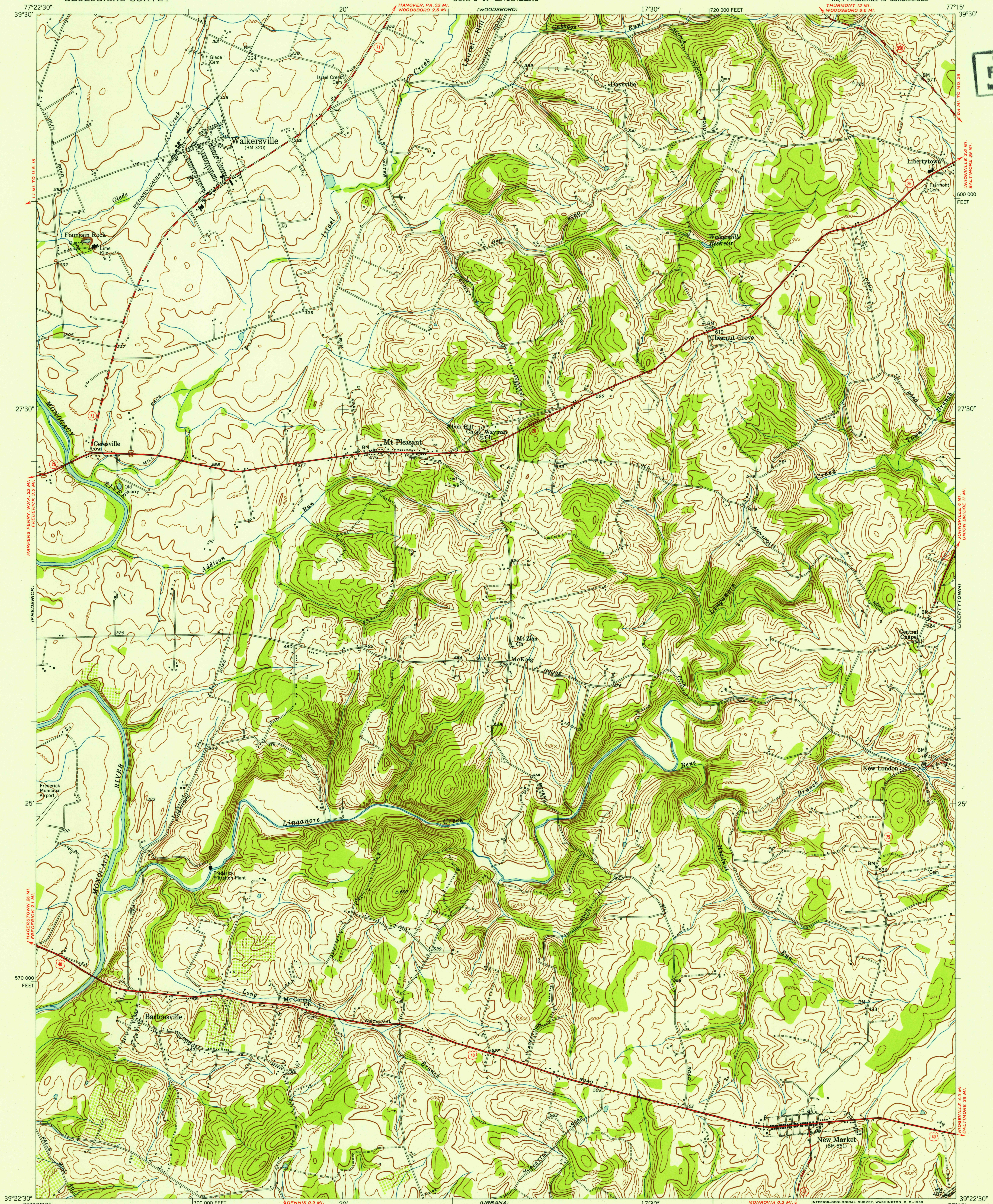


FILE COPY
Inspection and Editing

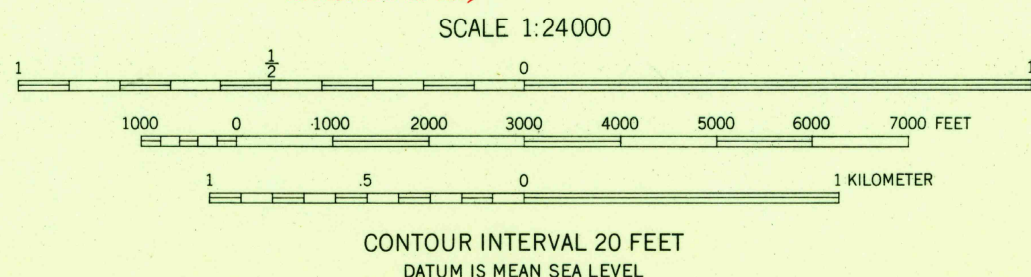


Mapped by Corps of Engineers, U.S. Army
Edited and published by the Geological Survey
Control by USGS and USC&GS

Topography from aerial photographs by stereophotogrammetric
methods. Aerial photographs taken 1943
Culture revised by the Geological Survey 1953

Polyconic projection. 1927 North American datum
10,000-foot grid based on Maryland coordinate system

TRUE NORTH
MAGNETIC NORTH
APPROXIMATE MEAN
DECLINATION, 1953



USGS
Historical File
Topographic Division



ROAD CLASSIFICATION
Heavy-duty 4 LANE 16 LANE Light-duty
Medium-duty 4 LANE 16 LANE Unimproved dirt
U. S. Route State Route

FILE COPY
Inspection and Editing

WALKERSVILLE, MD.
NE/4 FREDERICK 15' QUADRANGLE
N3922.5-W715/7.5

1953

THIS MAP COMPLIES WITH NATIONAL MAP ACCURACY STANDARDS
FOR SALE BY U. S. GEOLOGICAL SURVEY, WASHINGTON 25, D. C.
A FOLDER DESCRIBING TOPOGRAPHIC MAPS AND SYMBOLS IS AVAILABLE ON REQUEST

JAN 26 1954
2130