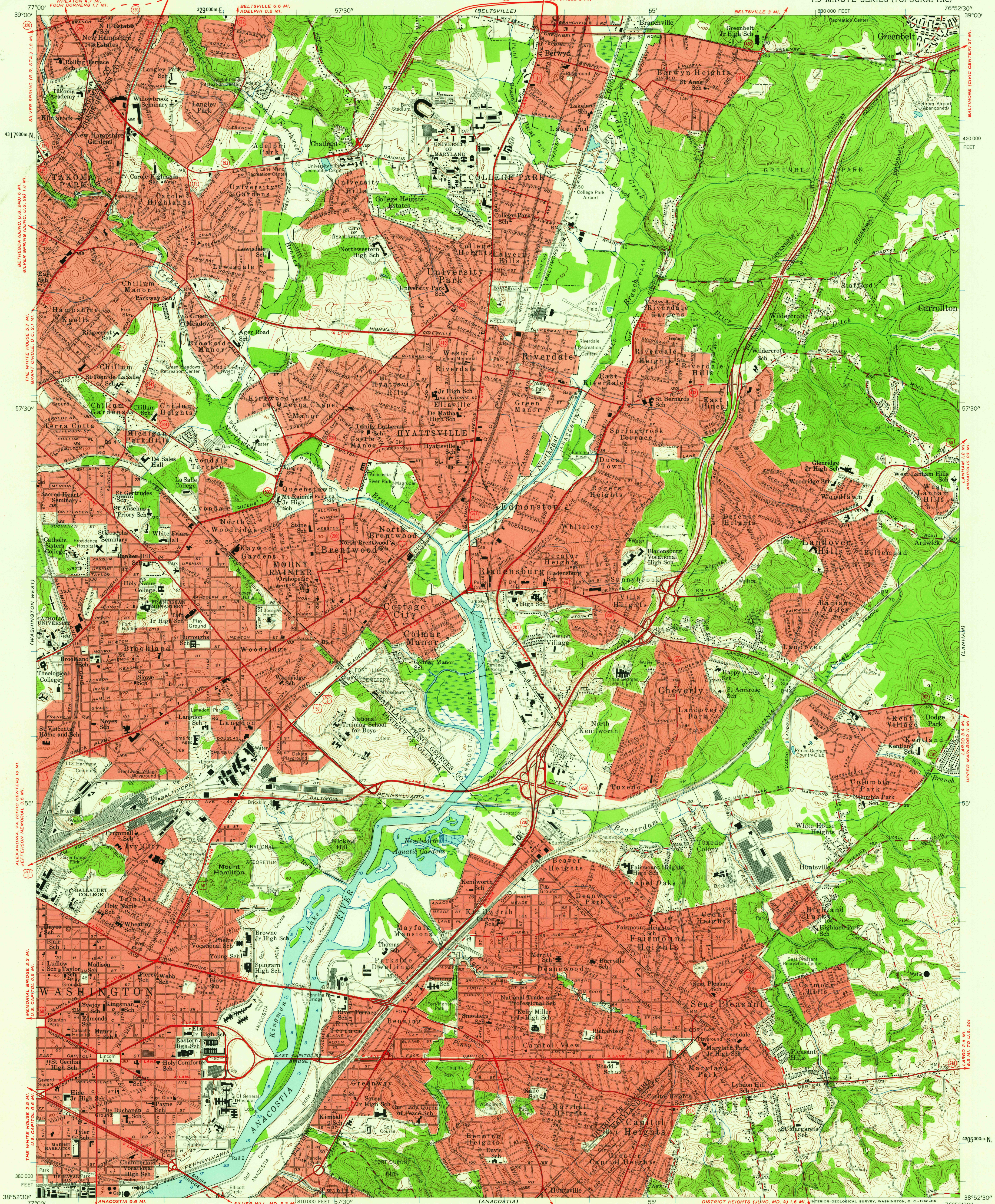


UNITED STATES  
DEPARTMENT OF THE INTERIOR  
GEOLOGICAL SURVEY

WASHINGTON EAST QUADRANGLE  
MARYLAND—DISTRICT OF COLUMBIA  
7.5 MINUTE SERIES (TOPOGRAPHIC)



Mapped, edited, and published by the Geological Survey  
Control by USGS, USCGS, USCE, NCPs, and WSSC

Topography from aerial photographs by Wild A-6  
Aerial photographs taken 1955. Field check 1957

Hydrography compiled from USCGS chart 560 (1955)

Polyconic projection. 1927 North American datum  
10,000-foot grids based on Maryland coordinate system,  
1000-meter Universal Transverse Mercator grid ticks,  
zone 18, shown in blue

Fine red dashed lines indicate selected fence and field lines  
visible on aerial photographs. This information is unchecked

Red tint indicates areas in which only landmark  
buildings are shown

Unchecked elevations are shown in brown

SCALE 1:24,000  
1 000 0 1000 2000 3000 4000 5000 6000 7000 FEET  
1 0 1 2 3 4 5 6 7 8 9 10 KILOMETER

CONTOUR INTERVAL 10 FEET  
DATUM IS MEAN SEA LEVEL

DEPTH CURVES AND SOUNDINGS IN FEET—DATUM IS MEAN LOW WATER  
SHORELINE SHOWN REPRESENTS THE APPROXIMATE LINE OF MEAN HIGH WATER  
THE MEAN RANGE OF TIDE IS APPROXIMATELY 2.9 FEET

THIS MAP COMPLIES WITH NATIONAL MAP ACCURACY STANDARDS  
FOR SALE BY U. S. GEOLOGICAL SURVEY, WASHINGTON 25, D. C.  
A FOLDER DESCRIBING TOPOGRAPHIC MAPS AND SYMBOLS IS AVAILABLE ON REQUEST

USGS  
Historical File  
Topographic Division

ROAD CLASSIFICATION  
Heavy-duty ——— Light-duty ———  
Medium-duty ——— Unimproved dirt - - - - -  
U. S. Route ——— State Route ———

QUADRANGLE LOCATION

WASHINGTON EAST, MD.—D. C.  
N 3852.5—W 7652.5/7.5

1957

RETURN TO:  
USGS AND HISTORICAL MAP ARCHIVES

JAN 10 1963

TOPOGRAPHIC DIVISION