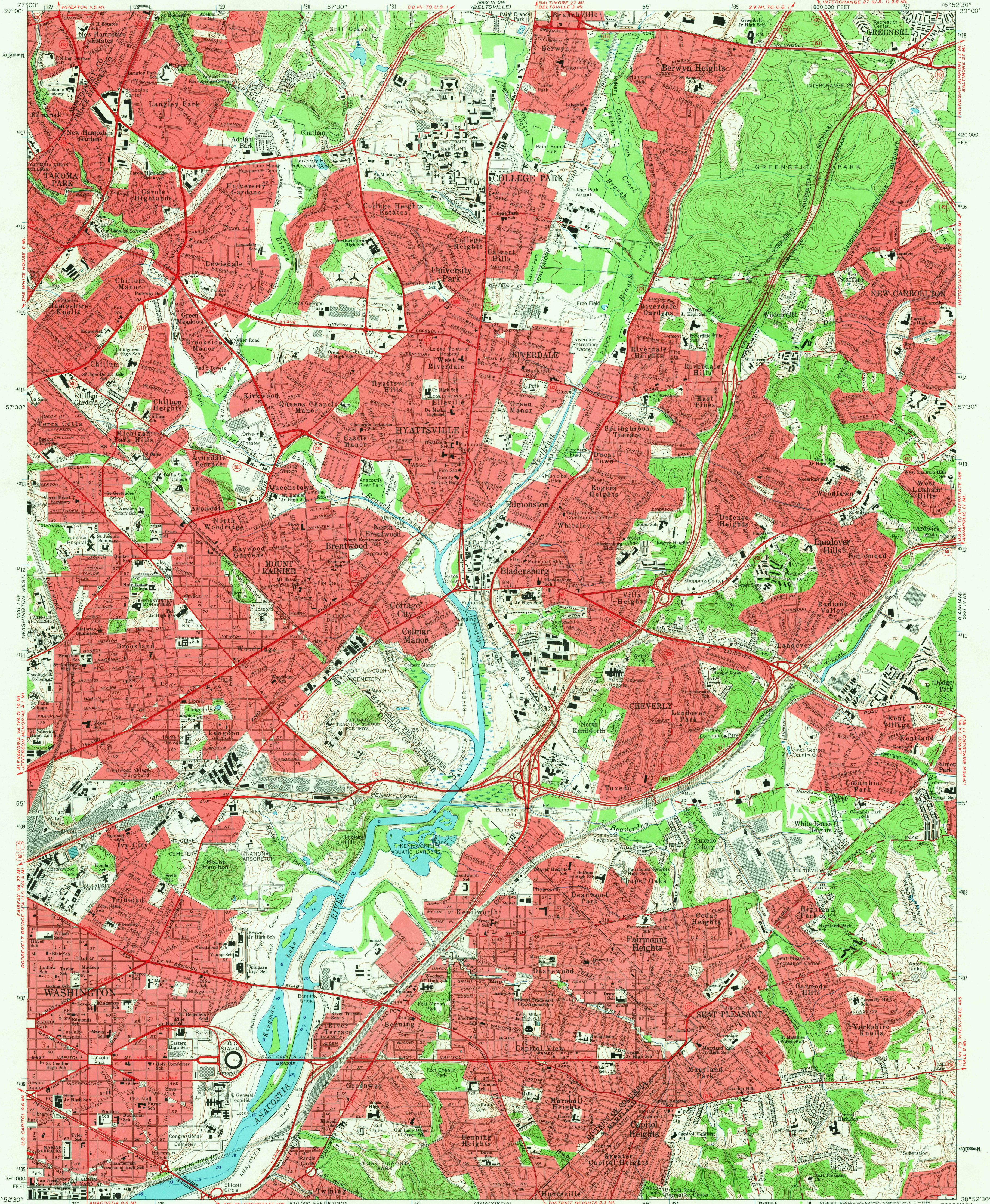
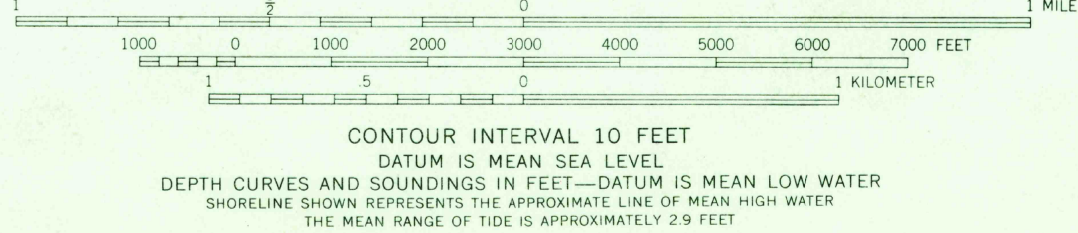
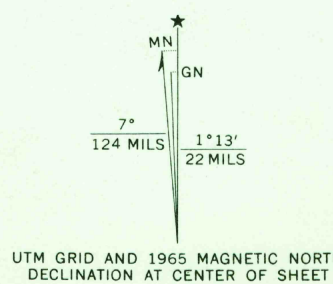


UNITED STATES
DEPARTMENT OF THE INTERIOR
GEOLOGICAL SURVEY

WASHINGTON EAST QUADRANGLE
MARYLAND—DISTRICT OF COLUMBIA
7.5 MINUTE SERIES (TOPOGRAPHIC)
INTERCHANGE 27 (U.S. 11 2.5 MI.)
830 000 FEET



Mapped, edited, and published by the Geological Survey
Control by USGS, USC&GS, USCE, NCPS, and WSSC
Topography by photogrammetric methods from aerial photographs
taken 1955. Field checked 1957. Revised 1965
Selected hydrographic data compiled from USC&GS Chart 560 (1965)
This information is not intended for navigational purposes
Polyconic projection. 1927 North American datum
10,000-foot grid based on Maryland coordinate system
1000-meter Universal Transverse Mercator grid ticks,
zone 18, shown in blue
Red tint indicates areas in which only landmark buildings are shown



USGS
Historical File
Topographic Division

ROAD CLASSIFICATION

Heavy-duty	Light-duty
Medium-duty	Unimproved dirt
Interstate Route	U. S. Route
	State Route

U.S.G.S.

WASHINGTON EAST, MD.—D. C.

N3852.5—W7652.5/7.5

1965

AMS 5661 IV NW—SERIES V833

10,180

NCT 24 1965

THIS MAP COMPLIES WITH NATIONAL MAP ACCURACY STANDARDS
FOR SALE BY U. S. GEOLOGICAL SURVEY, WASHINGTON, D. C. 20242
A FOLDER DESCRIBING TOPOGRAPHIC MAPS AND SYMBOLS IS AVAILABLE ON REQUEST

RETURN TO:
USGS AND HISTORICAL MAP ARCHIVES