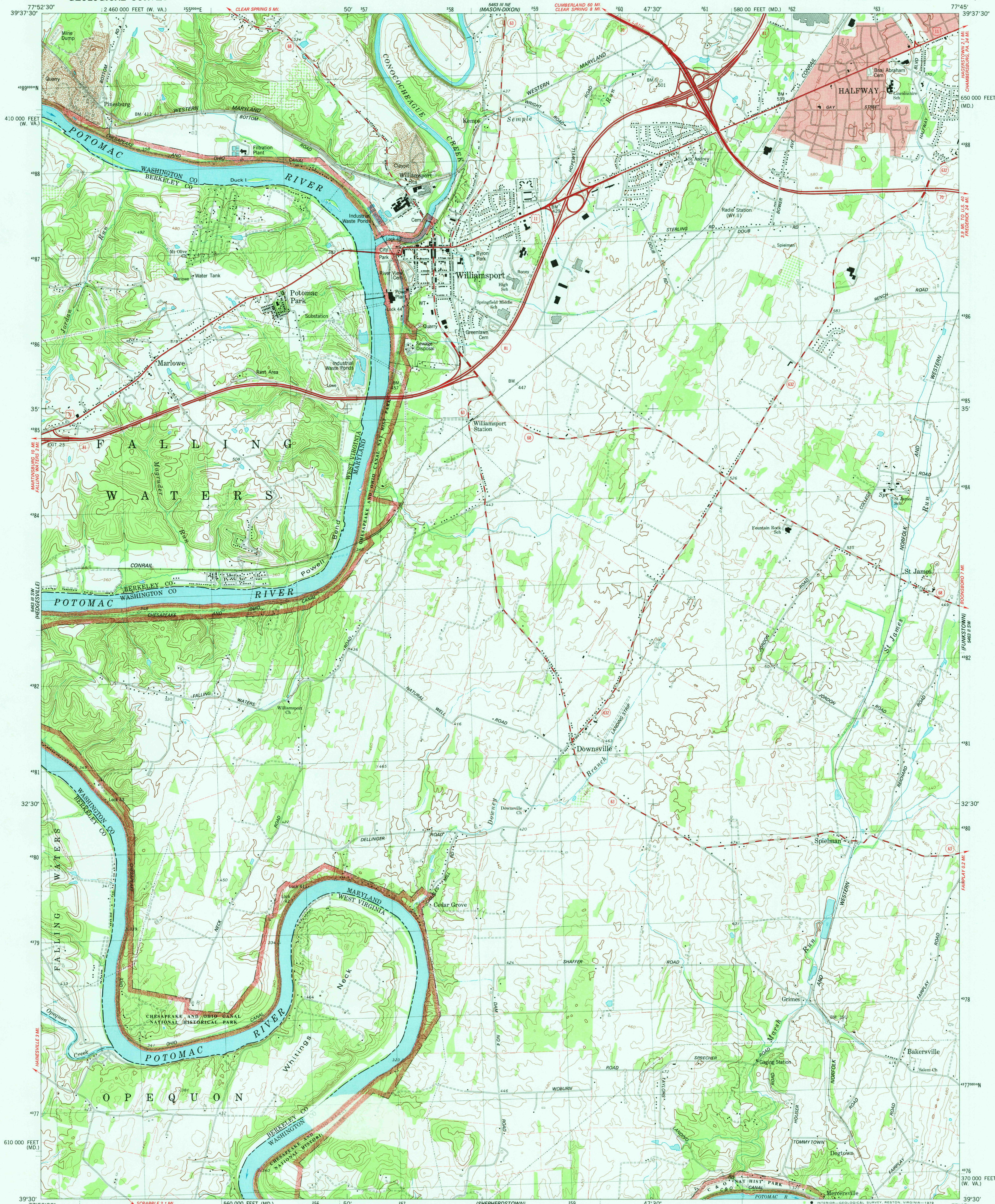


UNITED STATES  
DEPARTMENT OF THE INTERIOR  
GEOLOGICAL SURVEY

STATE OF WEST VIRGINIA  
REPRESENTED BY THE  
STATE OF WEST VIRGINIA GEOLOGICAL SURVEY  
AND OTHER STATE AGENCIES

WILLIAMSPORT QUADRANGLE  
MARYLAND—WEST VIRGINIA  
7.5 MINUTE SERIES (TOPOGRAPHIC)  
SE/4 WILLIAMSPORT 15' QUADRANGLE



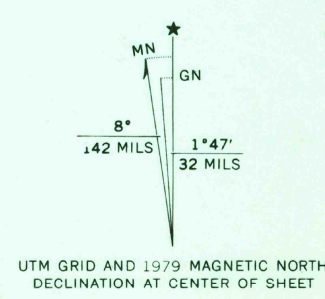
Mapped, edited, and published by the Geological Survey

Control by USGS and NOS/NOAA

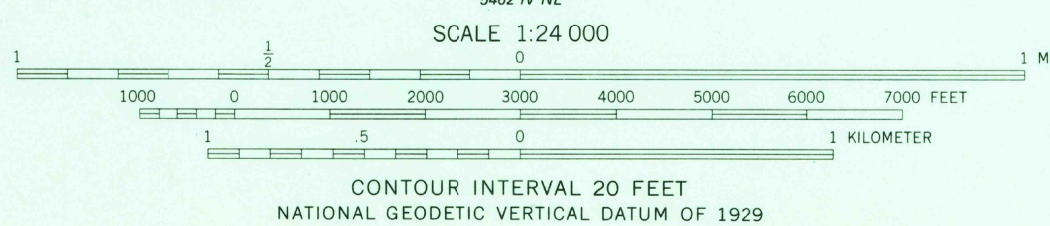
Topography by photogrammetric methods from aerial photographs taken 1974. Field checked 1974. Map edited 1979. Supersedes map dated 1971.

Projection: Maryland coordinate system (Lambert conformal conic)  
10,000-foot grid ticks based on Maryland coordinate system and West Virginia coordinate system, north zone  
1000-meter Universal Transverse Mercator grid, zone 18  
1927 North American datum

Red tint indicates areas in which only landmark buildings are shown  
Fine red dashed lines indicate selected fence and field lines where generally visible on aerial photographs. This information is unchecked  
There may be private inholdings within the boundaries of the National or State reservations shown on this map



UTM GRID AND 1979 MAGNETIC NORTH DECLINATION AT CENTER OF SHEET



THIS MAP COMPLIES WITH NATIONAL MAP ACCURACY STANDARDS  
FOR SALE BY U. S. GEOLOGICAL SURVEY, RESTON, VIRGINIA 22092  
A FOLDER DESCRIBING TOPOGRAPHIC MAPS AND SYMBOLS IS AVAILABLE ON REQUEST



QUADRANGLE LOCATION

ROAD CLASSIFICATION	
Primary highway, hard surface	Light-duty road, hard or improved surface
Secondary highway, hard surface	Unimproved road
Interstate Route	U. S. Route
	State Route

WILLIAMSPORT, MD.—W. VA.  
8R/4 WILLIAMSPORT 15' QUADRANGLE  
N3930—W7745

1979  
DMA 5463 III SE-SERIES V833

MAR 1 1983  
3100