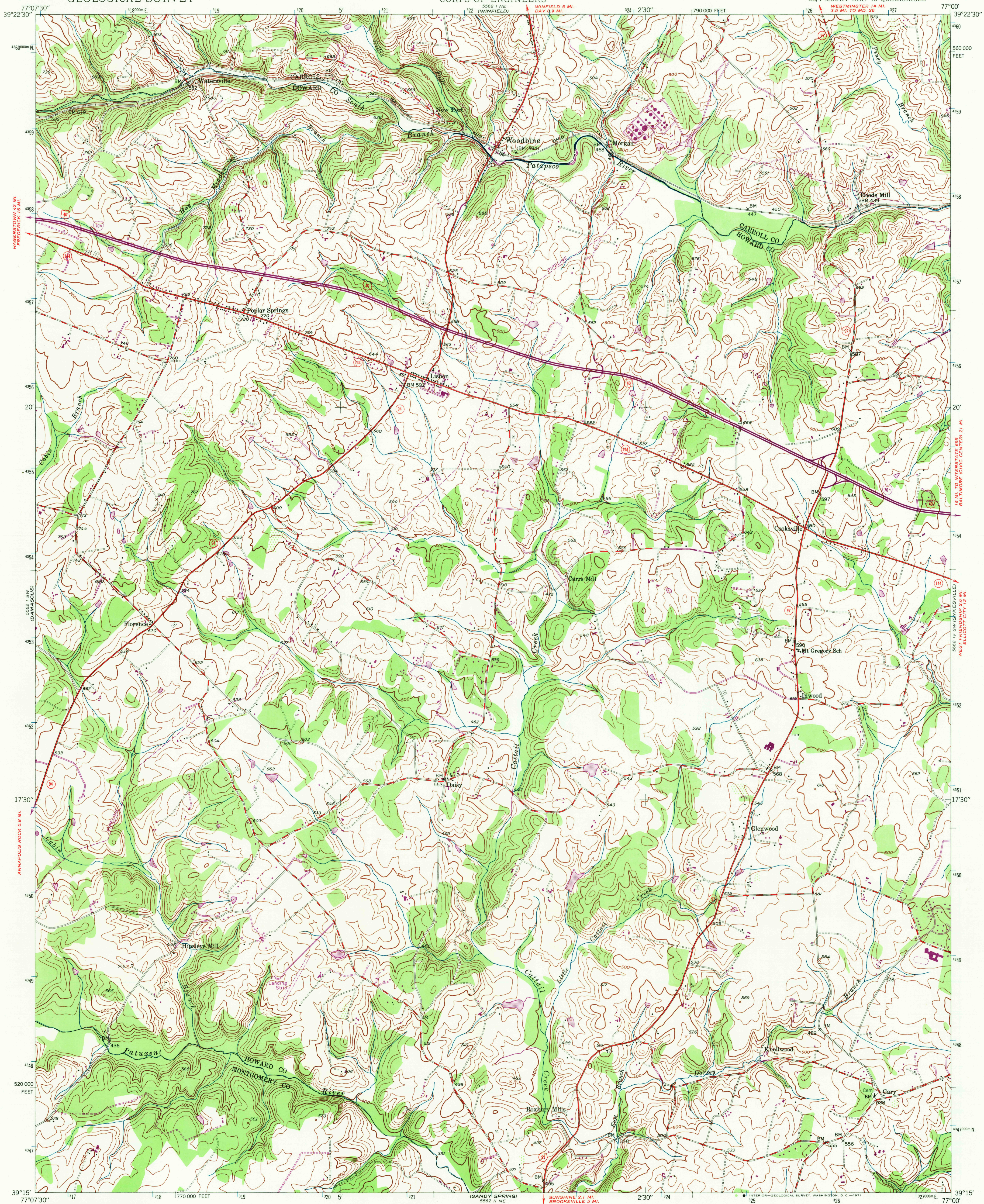


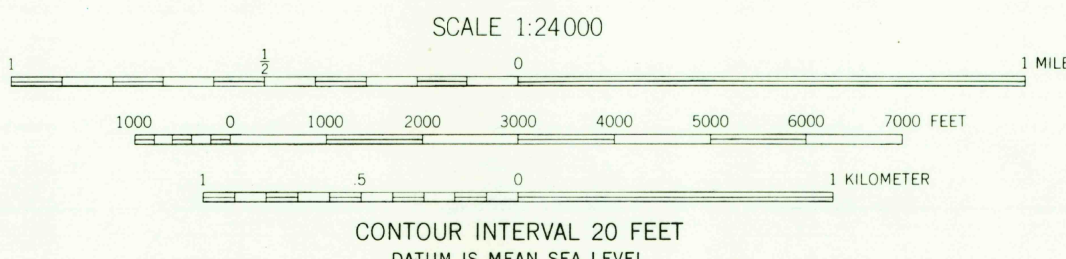
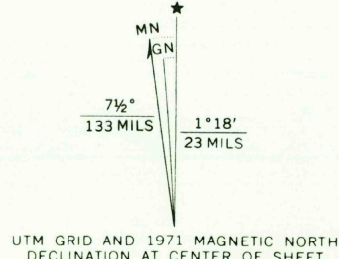
UNITED STATES
DEPARTMENT OF THE INTERIOR
GEOLOGICAL SURVEY

UNITED STATES
DEPARTMENT OF THE ARMY
CORPS OF ENGINEERS

WOODBINE QUADRANGLE
MARYLAND
7.5 MINUTE SERIES (TOPOGRAPHIC)
SE/4 MOUNT AIRY 15' QUADRANGLE



Map by U.S. Forest Service
Edited and published by the Geological Survey
Control by USGS, USC&GS, USFS, and WSSD
Topography from aerial photographs by KEK plotter 1944
Aerial photographs taken 1943-1945. Field check 1945
Polyconic projection, 1927 North American datum
10,000-foot grid based on Maryland coordinate system
1000-meter Universal Transverse Mercator grid ticks,
zone 18, shown in blue
Revisions shown in purple compiled by the Geological
Survey from aerial photographs taken 1971. This
information not field checked



ROAD CLASSIFICATION
Heavy-duty ——— Light-duty ———
Medium-duty ——— Unimproved dirt ———
U.S. Route ——— State Route ———
Interstate Route ———
WOODBINE, MD.
SE/4 MOUNT AIRY 15' QUADRANGLE
N3915-W7700/7.5

THIS MAP COMPLIES WITH NATIONAL MAP ACCURACY STANDARDS
FOR SALE BY U.S. GEOLOGICAL SURVEY, WASHINGTON, D. C. 20242
A FOLDER DESCRIBING TOPOGRAPHIC MAPS AND SYMBOLS IS AVAILABLE ON REQUEST

1945
PHOTOREVISED 1971
AMS 5562 I SE-SERIES V833

NOV 17 1971
USGS
HISTORICAL FILE
TOPOGRAPHIC DIVISION