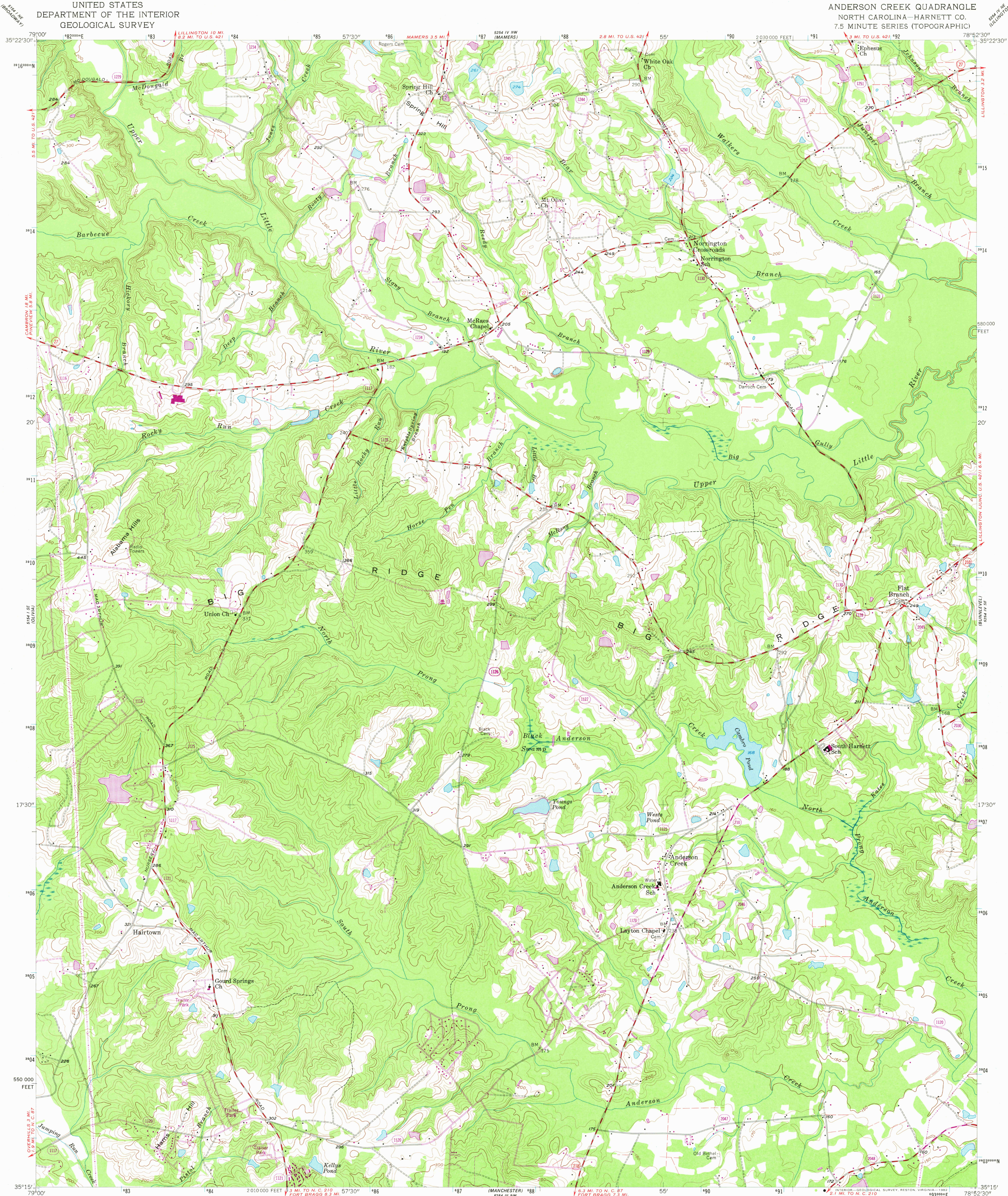


UNITED STATES
DEPARTMENT OF THE INTERIOR
GEOLOGICAL SURVEY

ANDERSON CREEK QUADRANGLE
NORTH CAROLINA—HARNETT CO.
7.5 MINUTE SERIES (TOPOGRAPHIC)



Mapped, edited, and published by the Geological Survey

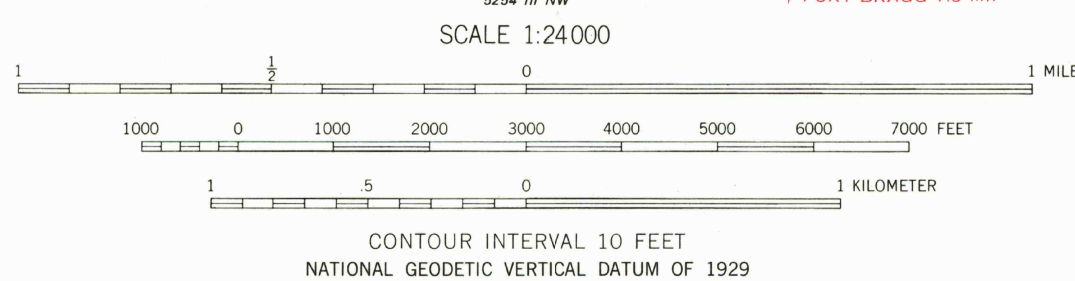
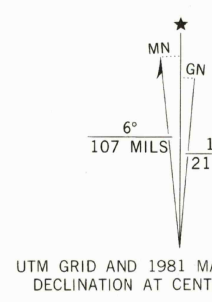
Control by USGS and NOS/NOAA

Topography by photogrammetric methods from aerial photographs taken 1955. Field checked 1956

Polycyclic projection. 10,000-foot grid ticks based on North Carolina coordinate system. 1000-meter Universal Transverse Mercator grid ticks, zone 17, shown in blue. 1927 North American Datum To place on the predicted North American Datum 1983 move the projection lines 12 meters south and 22 meters west as shown by dashed corner ticks

Fine red dashed lines indicate selected fence and field lines where generally visible on aerial photographs. This information is unchecked

Revisions shown in purple and woodland compiled in cooperation with State of North Carolina agencies from aerial photographs taken 1980 and other sources. This information not field checked. Map edited 1981



ROAD CLASSIFICATION	
Medium-duty	Light-duty
Unimproved dirt	State Route

ANDERSON CREEK, N. C.
N 3515—W 7852.5/7.5

1956
PHOTOREVISED 1981
DMA 5254 IV SW—SERIES 7842

THIS MAP COMPLIES WITH NATIONAL MAP ACCURACY STANDARDS
FOR SALE BY U. S. GEOLOGICAL SURVEY, RESTON, VIRGINIA 22092
A FOLDER DESCRIBING TOPOGRAPHIC MAPS AND SYMBOLS IS AVAILABLE ON REQUEST

MAR 22 1982

1900